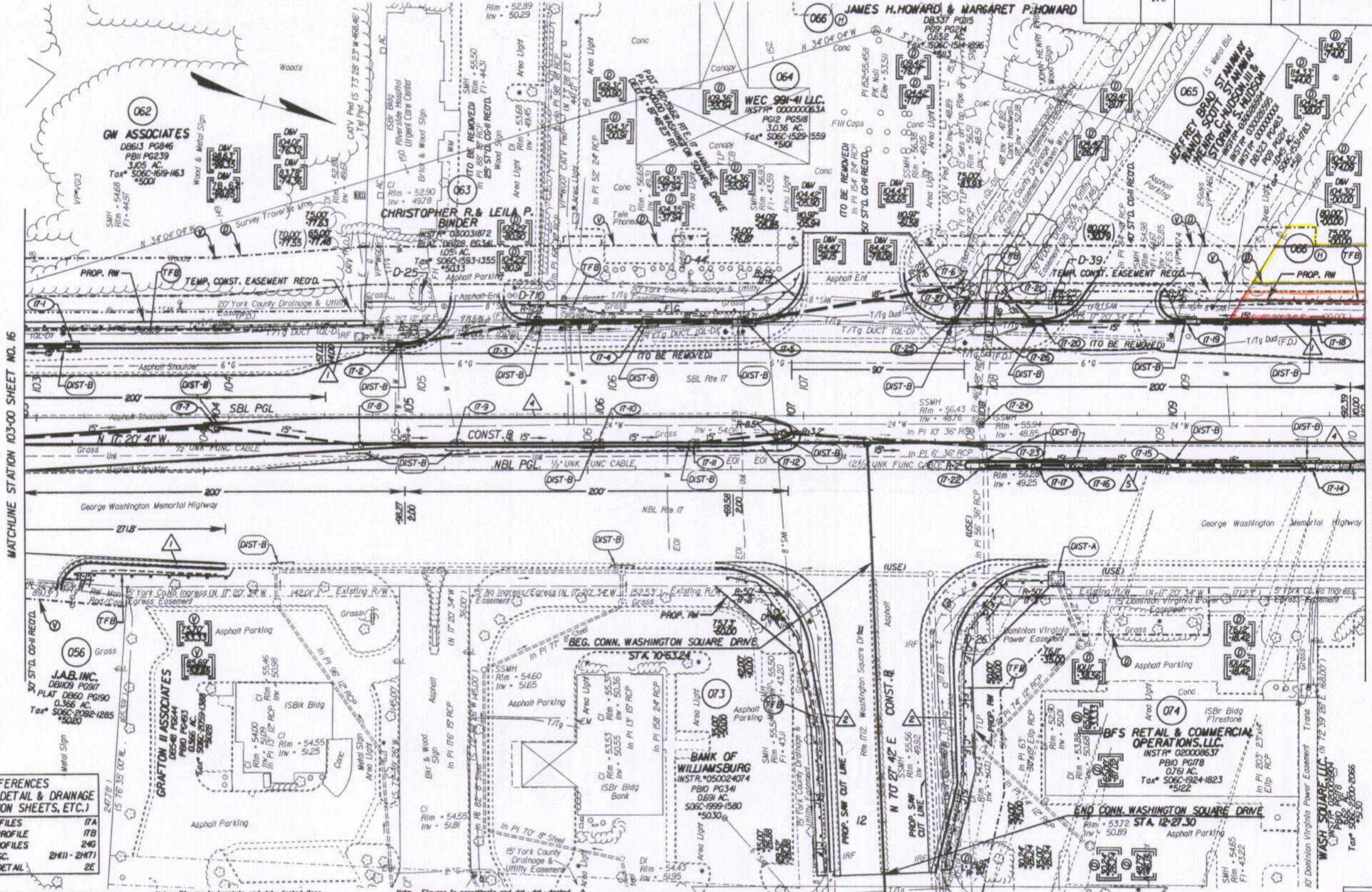


SURVEYED BY: J. B. HARRIS (757) 253-7577
 SUPERVISED BY: P. L. BYRUM (757) 925-2557
 DESIGNED BY: J. D. WIMSTEAD (757) 925-2556
 HAMPTON ROADS DISTRICT DESIGN UNIT

DESIGN FEATURES RELATING TO CONSTRUCTION OR TO REGULATION AND CONTROL OF TRAFFIC MAY BE SUBJECT TO CHANGE AS DEEMED NECESSARY BY THE DEPARTMENT

REVISION	DATE	FEDERAL AID PROJECT	ROUTE	STATE PROJECT	SHEET NO.
12/09/05	02/06/06	VA.	17	6017-099-129, RW-201, C-501	17

THESE PLANS ARE UNFINISHED AND ARE NOT TO BE USED FOR ANY TYPE OF CONSTRUCTION.



REFERENCES
 (PROFILES, DETAIL & DRAINAGE DESCRIPTION SHEETS, ETC.)

MAINLINE PROFILES	17A
CONNECTION PROFILE	17B
ENTRANCE PROFILES	24G
DRAINAGE DESC.	2H(1) - 2H(7)
CROSS-OVER DETAIL	2E

NOTE: PGL DENOTES PROFILE GRADE LINE
 NOTE: SEE GENERAL NOTES FOR E&S LEGEND
 ○ DENOTES DRAINAGE STRUCTURE NUMBER
 Note: Figures in brackets and dot-dashed lines denote Permanent Easements.
 Note: Figures in parentheses and dot-dashed lines denote Temporary Easements.
 V Denotes variable easement required for Verizon Virginia
 D Denotes variable easement required for Dominion Virginia Power

Note: Figures in parentheses and dot-dashed lines denote Temporary Easements.
 C Denotes Construction Limits In Cuts
 F Denotes Construction Limits In Fills
 1 ST'D. CG-7 RECD.
 2 ST'D. CG-6 RECD.
 3 ST'D. MS-2 RECD.
 4 ST'D. MS-2 RECD.
 5 ST'D. MS-1A RECD.

MATCHLINE STATION 10+00 SHEET NO. 18

MATCHLINE STATION 103+00 SHEET NO. 16

PLAN NO.	PROJECT	FILE NO.	SHEET NO.
	6017-099-129		17

State Highway Plat Book No. 10 Page 20 doc # 070004610

9/28/2006 DWG