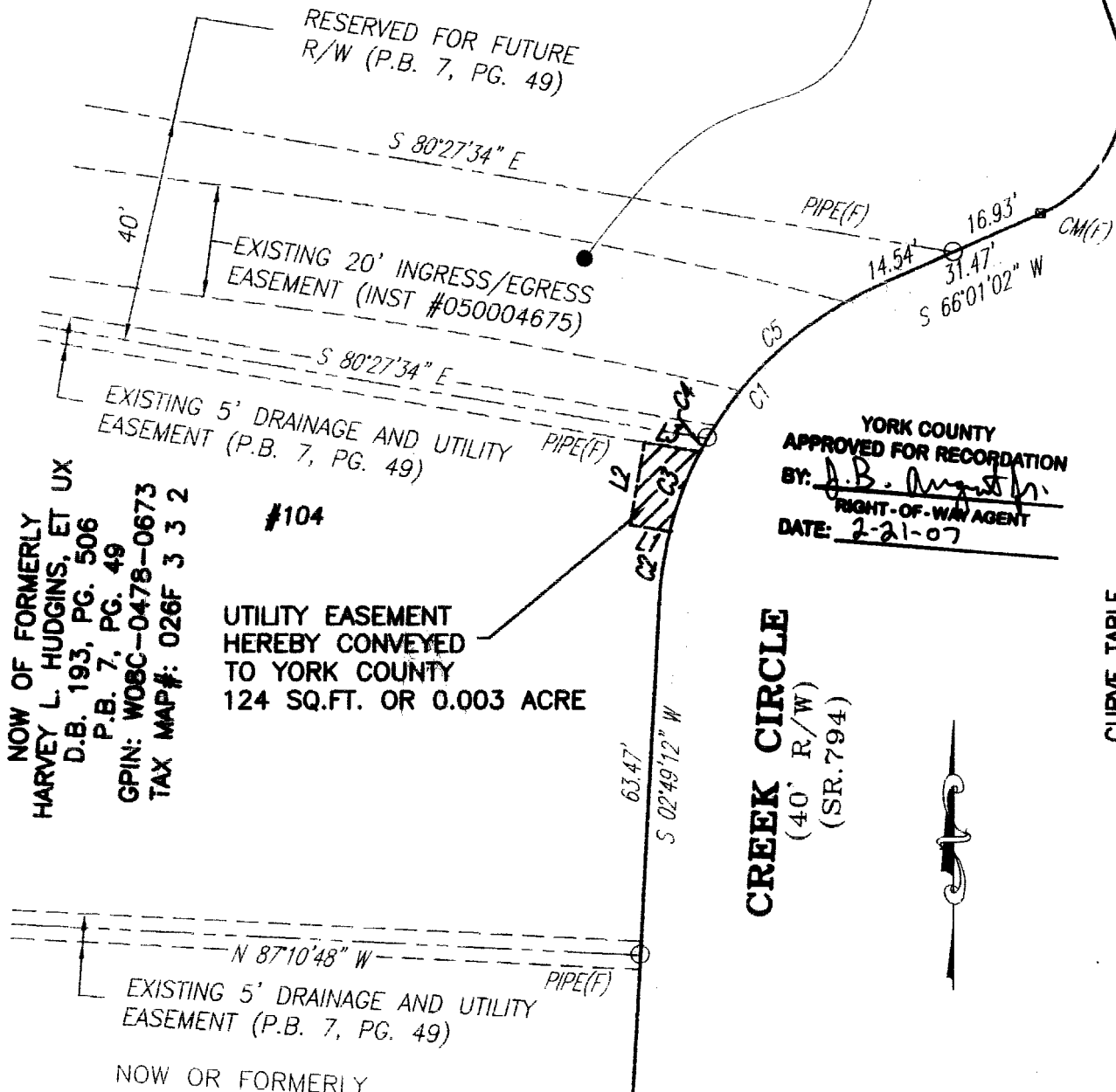


NOW OR FORMERLY  
 HARVEY LEE HUDGINS, ET UX  
 INST# 050004675  
 P.B. 7, PG. 49  
 GPIN: W08C-0449-0744  
 TAX MAP#: 026F 3 3 A

**YORK POINT  
 ROAD  
 (VARIABLE)  
 (WIDTH R/W)  
 (SR. 712)**



NOW OF FORMERLY  
 HARVEY L. HUDGINS, ET UX  
 D.B. 193, PG. 506  
 P.B. 7, PG. 49  
 GPIN: W08C-0478-0673  
 TAX MAP#: 026F 3 3 2

#104  
 UTILITY EASEMENT  
 HEREBY CONVEYED  
 TO YORK COUNTY  
 124 SQ.FT. OR 0.003 ACRE

YORK COUNTY  
 APPROVED FOR RECORDATION  
 BY: *J.B. Augustin*  
 RIGHT-OF-WAY AGENT  
 DATE: 2-21-07

CURVE TABLE

CURVE	RADIUS	DELTA ANGLE	ARC LENGTH	CHORD LENGTH	CHORD BEARING
C1	65.00'	63°11'50"	71.69'	68.12'	S 34°25'07" W
C2	65.00'	10°53'04"	12.35'	12.33'	S 08°15'45" W
C3	65.00'	13°29'48"	15.31'	15.28'	S 20°27'11" W
C4	65.00'	02°19'42"	2.64'	2.64'	S 28°21'56" W
C5	65.00'	36°29'15"	41.39'	40.70'	S 47°46'25" W

LINE TABLE

LINE	BEARING	DISTANCE
L1	N 80°27'34" W	7.11'
L2	N 09°32'26" E	15.00'
L3	S 80°27'34" E	10.00'

- NOTES:
1. THIS PLAT IS INTENDED FOR A DESCRIPTION OF UTILITY EASEMENT ONLY, AND DOES NOT CONSTITUTE A BOUNDARY SURVEY.
  2. THIS SURVEY WAS PERFORMED WITHOUT THE BENEFIT OF A TITLE REPORT, AND MAY NOT REFLECT ALL EASEMENTS OR RESTRICTIONS THAT MAY AFFECT THE PROPERTY.

REFERENCES:  
 D.B. 193, PG. 506  
 P.B. 7, PG. 49

PLAT OF UTILITY EASEMENT ACQUISITION  
 FROM: HARVEY L. HUDGINS, ET UX  
 TO: COUNTY OF YORK, VIRGINIA  
 PROJECT: YORK POINT SEWER PROJECT

DATE: 9/26/06

SCALE: 1' = 30'

MERIDIAN IS BASED ON:  
 VIRGINIA STATE PLANE  
 COORDINATE SYSTEM,  
 SOUTH ZONE, NAD 83  
 U.S. SURVEY FEET



PRECISION MEASUREMENTS, INC.  
 SURVEYORS • GPS • 3-D SCANNING • MAPPERS  
 813 DILIGENCE DRIVE, SUITE 119  
 NEWPORT NEWS, VIRGINIA 23606  
 (757) 595-7570

