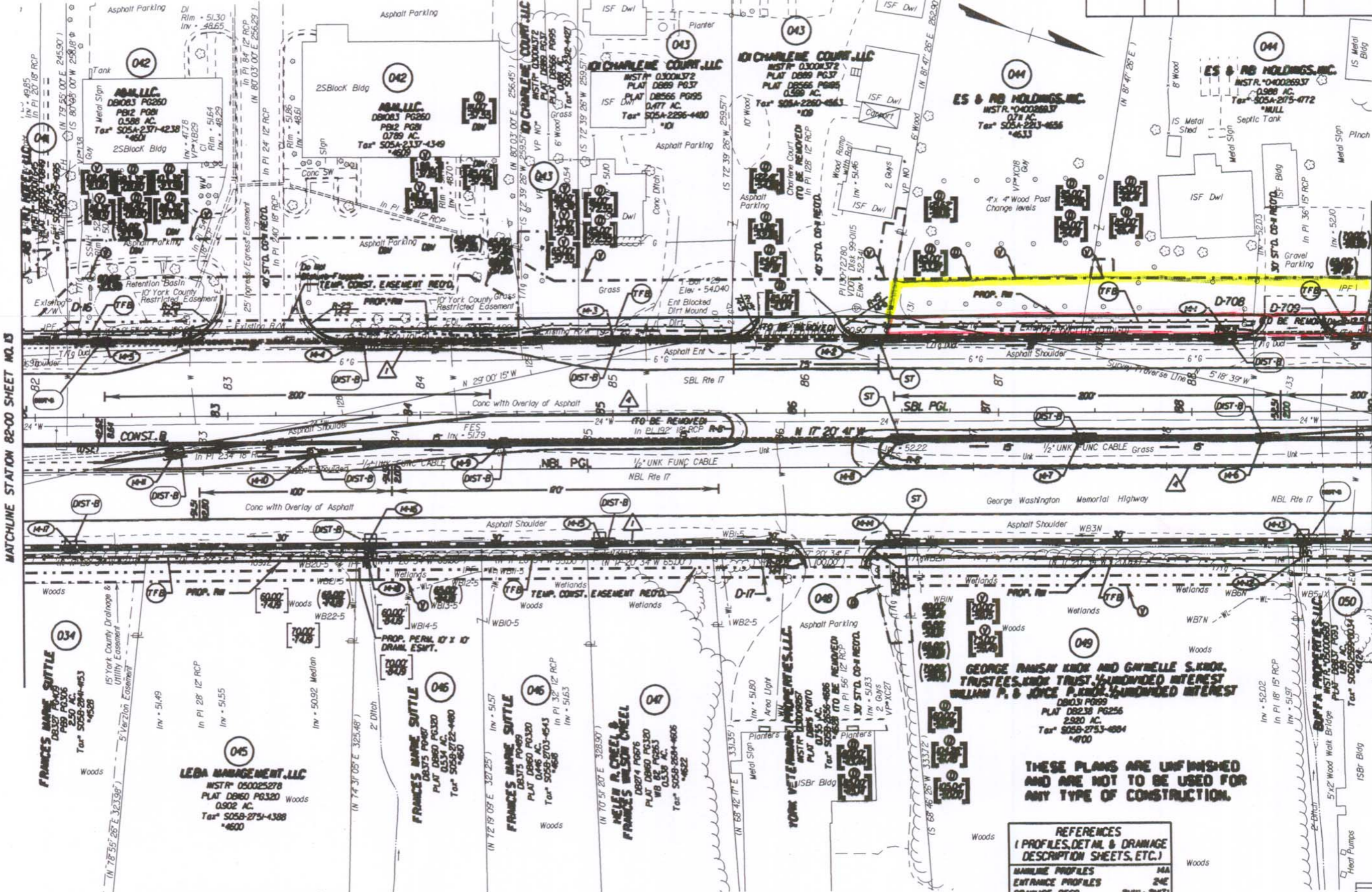


| STATE | FEDERAL RD PROJECT | ROUTE | STATE PROJECT               | SHEET NO. |
|-------|--------------------|-------|-----------------------------|-----------|
| VA.   |                    | 17    | 6017-099-129, RW-201, C-501 | 14        |

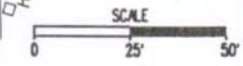


MATCHLINE STATION 82+00 SHEET NO. 13

MATCHLINE STATION 89+00 SHEET NO. 15

**THESE PLANS ARE UNFINISHED AND ARE NOT TO BE USED FOR ANY TYPE OF CONSTRUCTION.**

| REFERENCES<br>(PROFILES, DETAIL & DRAINAGE DESCRIPTION SHEETS, ETC.) |             |
|--|-------------|
| MAINLINE PROFILES  | MA          |
| ENTRANCE PROFILES  | 24E         |
| DRAINAGE DESC.   | 24D1 - 24T1 |
| CROSS-OVER DETAIL  | 25          |



NOTE: PGL DENOTES PROFILE GRADE LINE  
 NOTE: SEE GENERAL NOTES FOR E&S LEGEND  
 ○ DENOTES DRAINAGE STRUCTURE NUMBER

Notes: Figures in brackets and dot-dashed lines denote Permanent Easements.  
 (V) Denotes verbiage easement required for Verizon Virginia  
 (D) Denotes verbiage easement required for Dominion Virginia Power

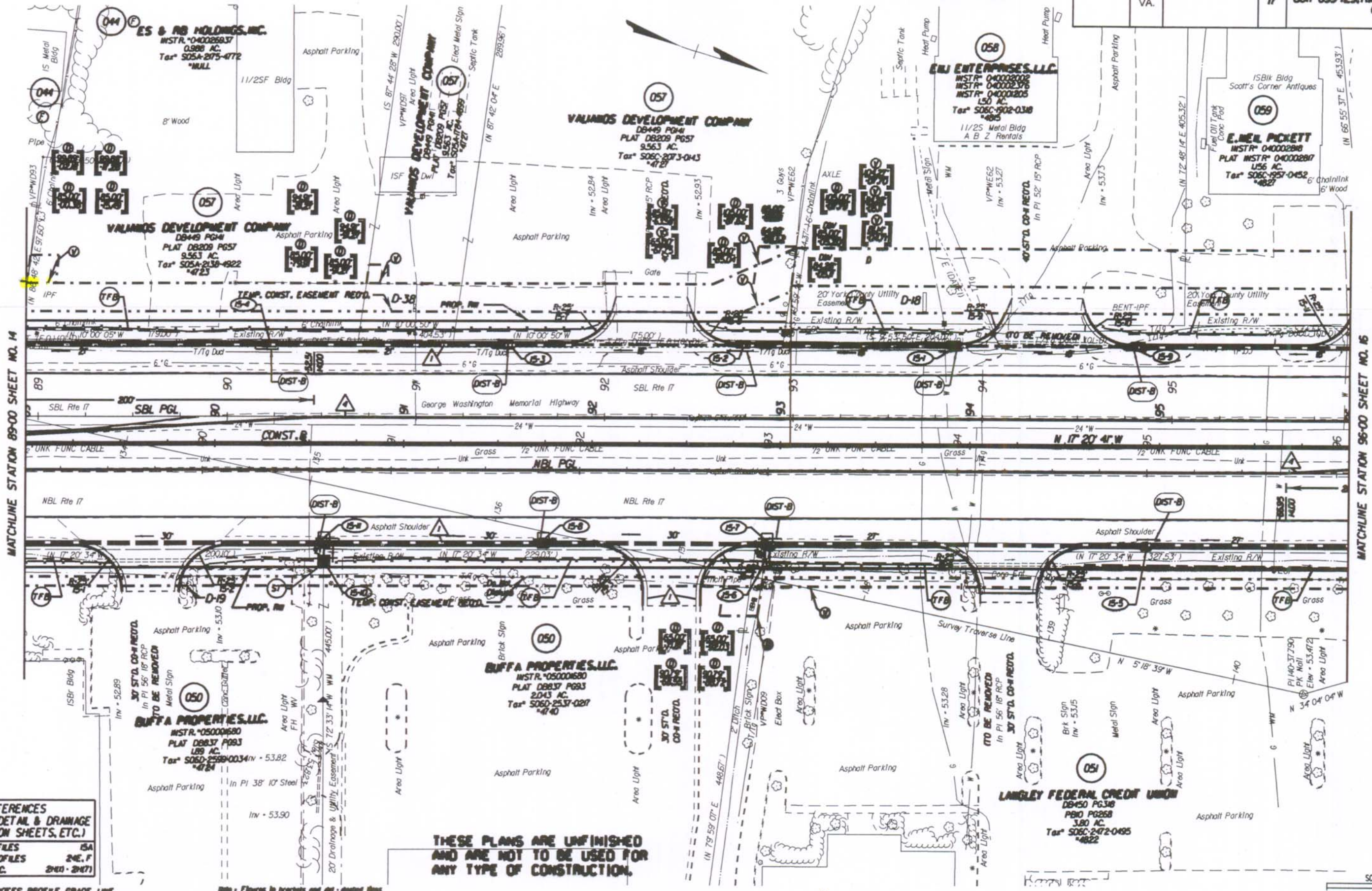
Notes: Figures in brackets and dot-dashed lines denote Temporary Easements.  
 [E] Denotes Construction Units in Cuts  
 [F] Denotes Construction Units in Fills

[E] Denotes Construction Units in Cuts  
 [F] Denotes Construction Units in Fills  
 (A) ST'D. CG-7 RECD.  
 (B) ST'D. NS-2 RECD.

| PLAN NO. | PROJECT      | FILE NO. | SHEET NO. |
|----------|--------------|----------|-----------|
|          | 6017-099-129 |          | 14        |

DESIGN FEATURES RELATING TO CONSTRUCTION OR TO REGULATION AND CONTROL OF TRAFFIC MAY BE SUBJECT TO CHANGE AS DEEMED NECESSARY BY THE DEPARTMENT

| STATE | FEDERAL AID PROJECT | ROUTE | STATE PROJECT               | SHEET NO. |
|-------|---------------------|-------|-----------------------------|-----------|
| VA.   |                     | 17    | 6017-099-129, RW-201, C-501 | 15        |



**REFERENCES (PROFILES, DETAIL & DRAINAGE DESCRIPTION SHEETS, ETC.)**

|                   |               |
|-------------------|---------------|
| MAINLINE PROFILES | ISA           |
| ENTRANCE PROFILES | 24E, F        |
| DRAINAGE DESC.    | 24(1) - 24(7) |

NOTE: PGL DENOTES PROFILE GRADE LINE  
 NOTE: SEE GENERAL NOTES FOR EBS LEGEND  
 ○ DENOTES DRAINAGE STRUCTURE NUMBER

Notes: Figures in brackets and dot-dashed lines denote Permanent Easements  
 Ⓢ Denotes variable easement required for Verizon Virginia  
 Ⓣ Denotes variable easement required for Dominion Virginia Power

Notes: Figures in parentheses and dot-dashed lines denote Temporary Easements  
 [ ] Denotes Construction Limits in Cuts  
 ( ) Denotes Construction Limits in Fills

△ STD. CS-7 RECD.  
 ▲ STD. MS-2 RECD.

**THESE PLANS ARE UNFINISHED AND ARE NOT TO BE USED FOR ANY TYPE OF CONSTRUCTION.**



| PLAN NO. | PROJECT      | FILE NO. | SHEET NO. |
|----------|--------------|----------|-----------|
|          | 6017-099-129 |          | 15        |