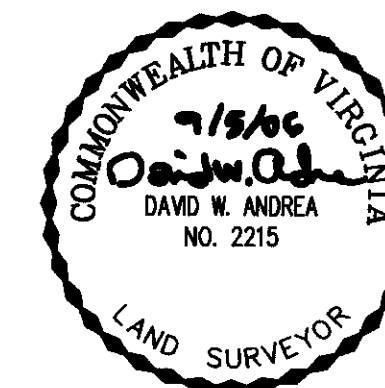


MATCHLINE - SEE SHEET 4

PLAT OF EASEMENTS  
 PARCELS B-3A, B-3B, B-3C, B-3D AND B-3E  
 "SUBDIVISION OF THE PROPERTY  
 OF BULIFANTS, L.P.  
 PARCEL B-3 AND BMP NO. 3"  
 INSTRUMENT #050025933  
 BRUTON MAGISTERIAL DISTRICT  
 COUNTY OF YORK, VIRGINIA

DATE: 09/05/06 SHEET 3 OF 10 SCALE: 1"=60'  
 PROJECT NO: 31392.01 DRAWN BY: DWP

**VHB** Vanasse Hangen Brustlin, Inc.  
 Transportation Land Development Environmental Services  
 11832 Rock Landing Drive, Suite 207  
 Newport News, Virginia 23606-4231  
 (757) 873-3386 • FAX (757) 873-0757



AREA OF VARIABLE WIDTH  
 INGRESS/EGRESS EASEMENT



YORK COUNTY  
 APPROVED FOR RECORDATION  
 BY: *Olivia...*  
 CHIEF OF DEVELOPMENT & COMPLIANCE  
 DATE: 6/6/07

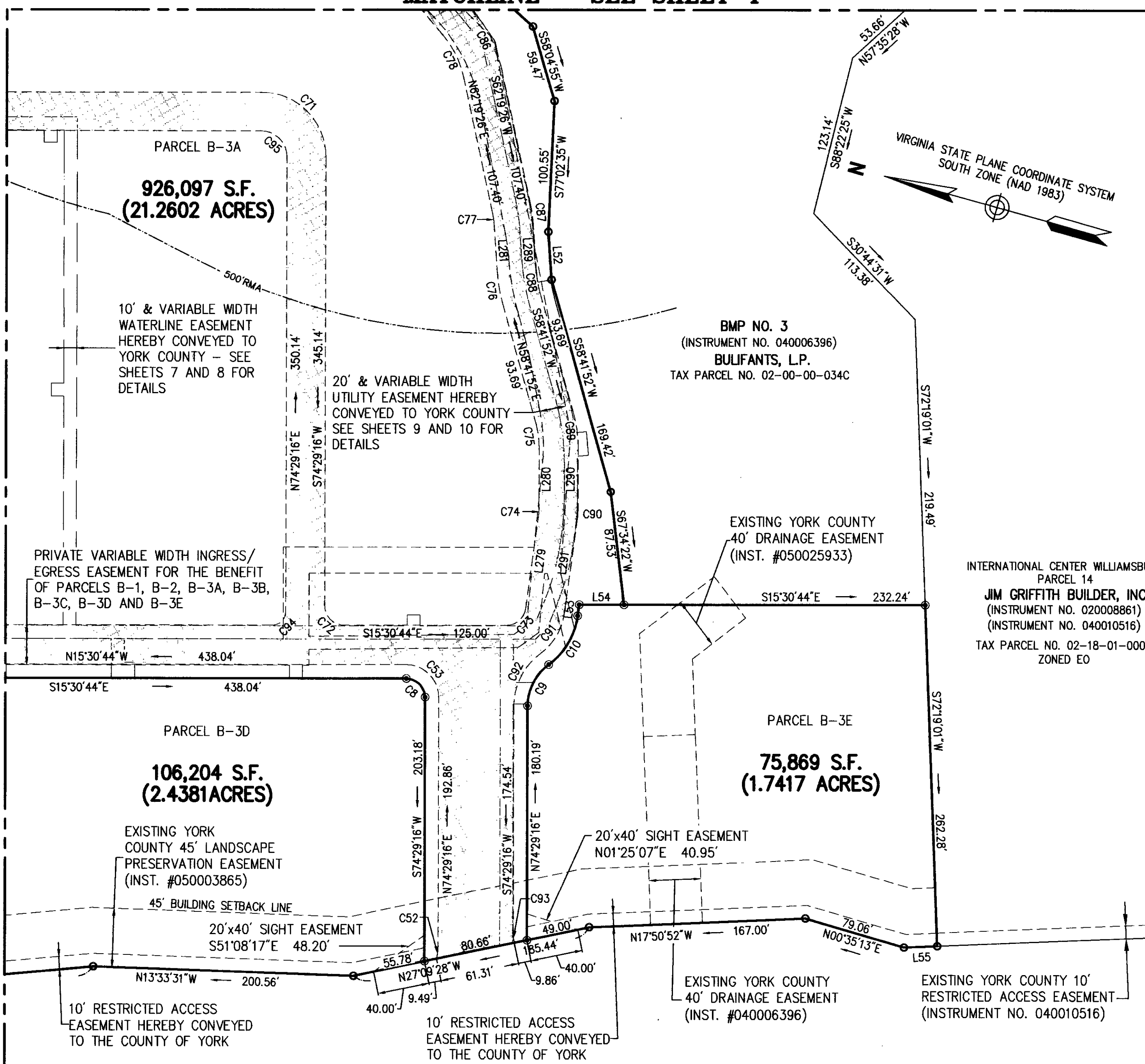
State Of Virginia  
 County Of York

IN THE CLERK'S OFFICE OF THE CIRCUIT COURT FOR THE COUNTY OF YORK-POQUOSON,  
 THE 7th DAY OF June, 2007, THIS MAP WAS PRESENTED AND ADMITTED  
 TO RECORD AS THE LAW DIRECTS AS INSTRUMENT NUMBER LRO07013046  
 9:55 A.M.

TESTE: *Lynn S Jenkins*  
 CLERK

BY: *Orchelia M...*

MATCHLINE - SEE SHEET 2



**MOORETOWN ROAD - STATE ROUTE 603**  
 VARIABLE WIDTH R/W (VDOT PROJ. # 0603-099-141, C-503)  
 (HWY.P.B. 8, PG. 230-238)

2007 JUN - 7 AM 9:55