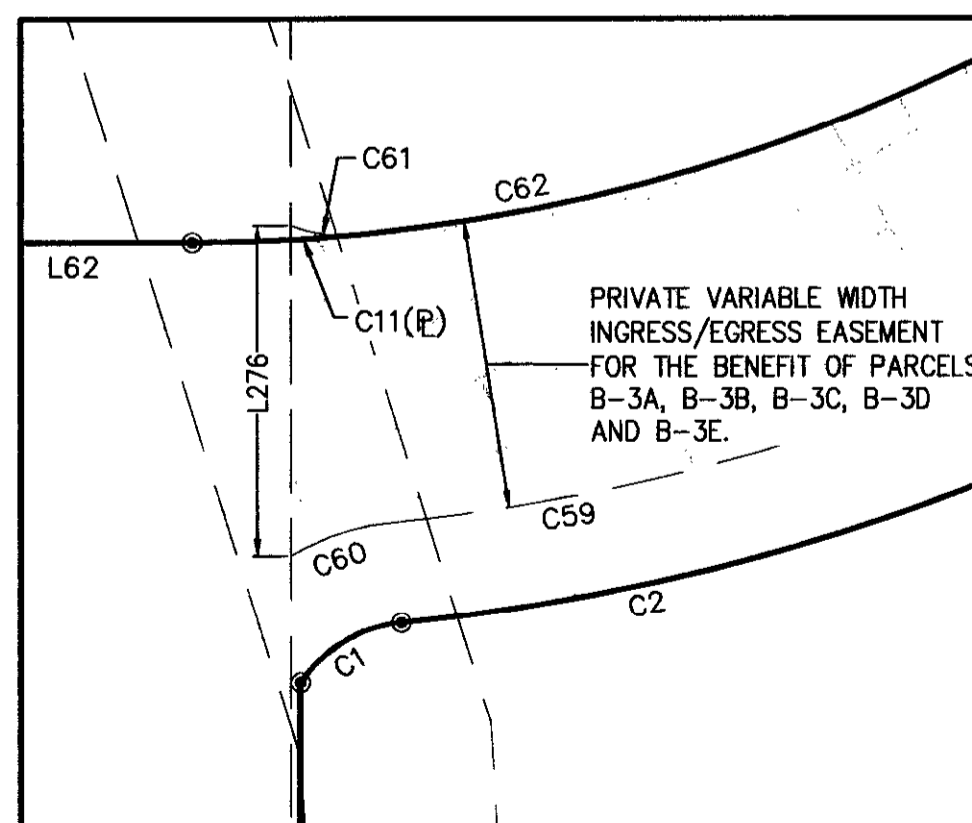
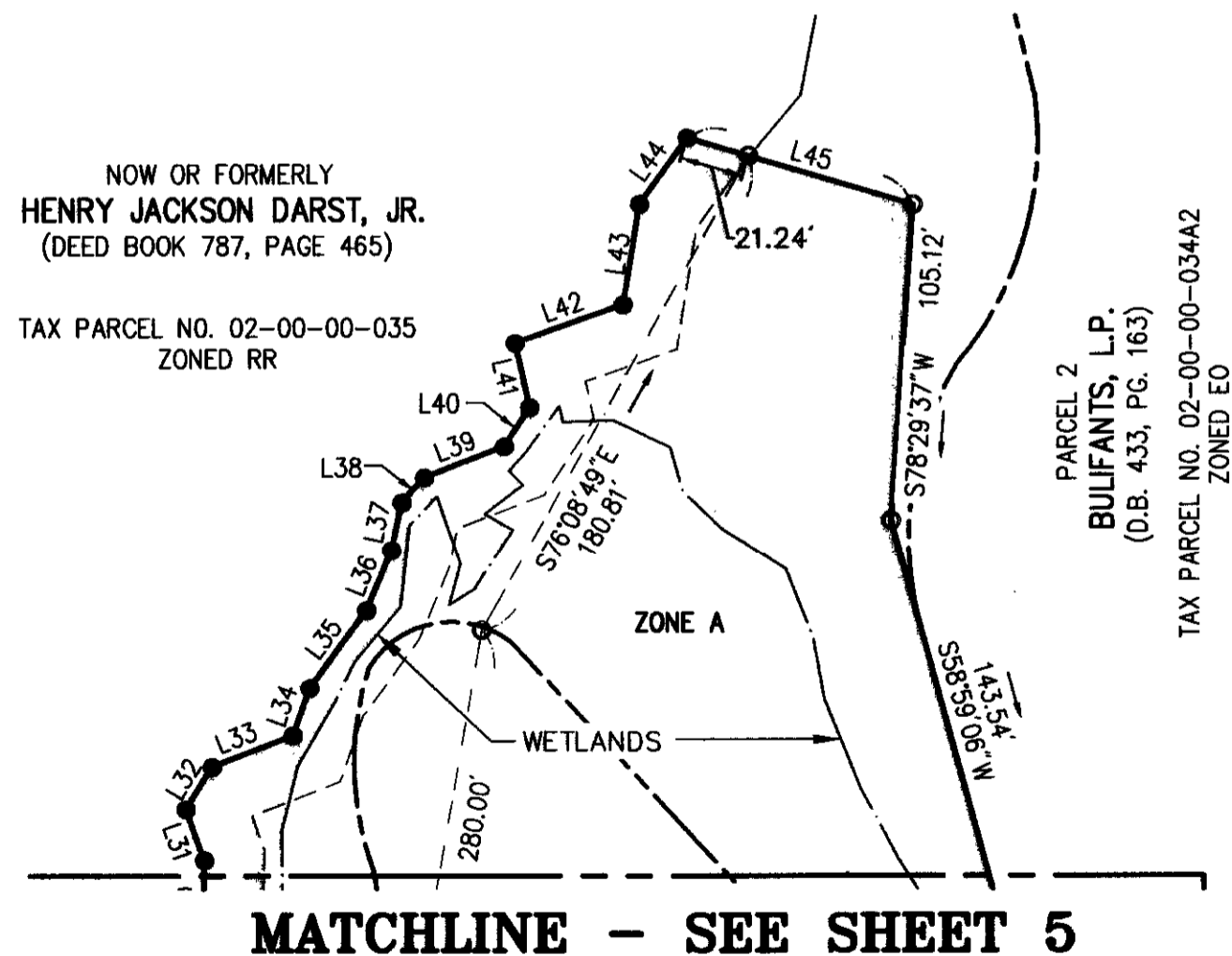


PROPERTY CURVE DATA TABLE						
NUMBER	RADIUS	DELTA	ARC LENGTH	TANGENT	CHORD	CHORD BEARING
C1	14.50'	49°53'46"	12.63'	6.75'	12.23'	N46°01'02"W
C2	225.50'	20°24'43"	80.34'	40.60'	79.91'	S31°16'31"E
C3	174.50'	25°58'08"	79.09'	40.24'	78.42'	N28°29'48"W
C4	14.50'	90°00'00"	22.78'	14.50'	20.51'	N29°29'16"E
C5	34.50'	69°21'54"	41.77'	23.87'	39.26'	N70°49'46"W
C6	34.50'	71°35'52"	43.11'	24.88'	40.36'	N38°41'17"E
C7	14.50'	90°00'00"	22.78'	14.50'	20.51'	N60°30'44"W
C8	14.50'	90°00'01"	22.78'	14.50'	20.51'	N29°29'17"E
C9	39.50'	53°51'14"	37.13'	20.06'	35.78'	N78°35'07"W
C10	55.50'	46°05'53"	44.65'	23.61'	43.46'	S74°42'26"E
C11	185.00'	25°58'08"	83.85'	42.66'	83.13'	S28°29'48"E
C12	215.00'	25°58'08"	97.45'	49.58'	96.62'	N28°29'48"W

ACCESS EASEMENT CURVE DATA TABLE						
NUMBER	RADIUS	DELTA	ARC LENGTH	TANGENT	CHORD	CHORD BEARING
C52	30.00'	16°17'09"	8.53'	4.29'	8.50'	N82°37'51"E
C53	25.00'	90°00'01"	39.27'	25.00'	35.36'	N29°29'16"E
C54	25.00'	90°00'00"	39.27'	25.00'	35.36'	N60°30'44"W
C55	45.00'	49°10'02"	38.62'	20.59'	37.44'	S49°54'15"W
C56	45.00'	44°22'32"	34.85'	18.35'	33.99'	S83°19'28"E
C57	25.00'	90°00'00"	39.27'	25.00'	35.36'	N29°29'16"E
C58	185.00'	25°58'08"	83.85'	42.66'	83.13'	N28°29'48"W
C59	215.00'	20°24'43"	76.59'	38.71'	76.19'	S31°16'31"E
C60	25.00'	25°37'22"	11.18'	5.69'	11.09'	N33°52'50"W
C61	15.01'	26°51'16"	7.03'	3.58'	6.97'	S07°24'56"E
C62	185.00'	20°24'43"	65.91'	33.31'	65.56'	S31°16'31"E
C63	215.00'	25°58'08"	97.45'	49.58'	96.62'	N28°29'48"W
C64	10.00'	90°00'00"	15.71'	10.00'	14.14'	S60°30'44"E
C65	10.00'	90°00'00"	15.71'	10.00'	14.14'	N29°29'16"E
C66	15.00'	21°30'37"	5.63'	2.85'	5.60'	N26°16'02"W
C67	15.00'	21°30'37"	5.63'	2.85'	5.60'	S04°45'26"E
C68	25.00'	0°20'10"	0.15'	0.07'	0.15'	S15°40'49"E
C69	25.00'	34°17'50"	14.96'	7.71'	14.74'	S32°59'49"E
C70	55.00'	34°38'00"	33.25'	17.15'	32.74'	N32°49'44"W
C71	50.00'	90°00'00"	78.54'	50.00'	70.71'	N29°29'16"E
C72	15.00'	90°00'00"	23.56'	15.00'	21.21'	S29°29'16"W
C73	15.00'	82°14'47"	21.53'	13.10'	19.73'	S56°38'05"E
C74	20.00'	7°46'42"	2.72'	1.36'	2.71'	N78°22'37"E
C75	70.00'	15°47'24"	19.29'	9.71'	19.23'	N66°35'34"E
C76	130.00'	11°56'34"	27.10'	13.60'	27.05'	S64°40'09"W
C77	70.00'	8°19'00"	10.16'	5.09'	10.15'	N66°28'56"E
C78	70.00'	27°56'20"	34.13'	17.41'	33.80'	N48°21'16"E
C79	120.00'	49°53'50"	104.50'	55.83'	101.23'	N09°26'11"E
C80	180.00'	38°11'58"	120.01'	62.33'	117.80'	S03°35'15"W
C81	120.00'	38°11'58"	80.00'	41.55'	78.53'	N03°35'15"E
C82	20.00'	31°40'06"	11.05'	5.67'	10.91'	N31°20'47"W
C83	150.00'	38°11'58"	100.01'	51.94'	98.16'	N03°35'15"E
C84	150.00'	38°11'58"	100.01'	51.94'	98.16'	S03°35'15"W
C85	150.00'	49°53'50"	130.63'	69.78'	126.54'	N09°26'11"E
C86	100.00'	27°56'20"	48.76'	24.88'	48.28'	N48°21'16"E
C87	100.00'	8°19'00"	14.52'	7.27'	14.50'	N66°28'56"E
C88	100.00'	11°56'34"	20.84'	10.46'	20.81'	S64°40'09"W
C89	100.00'	15°47'24"	27.56'	13.87'	27.47'	N66°35'34"E
C90	50.00'	7°46'42"	6.79'	3.40'	6.78'	N78°22'37"E
C91	45.00'	46°05'53"	36.21'	19.15'	35.24'	S74°42'26"E
C92	50.00'	53°51'14"	47.00'	25.40'	45.29'	N78°35'07"W
C93	35.00'	12°36'16"	7.70'	3.87'	7.68'	S68°11'08"W
C94	10.00'	90°00'00"	15.71'	10.00'	14.14'	S60°30'44"E
C95	20.00'	90°00'00"	31.42'	20.00'	28.28'	N29°29'16"E
C96	25.00'	34°38'00"	15.11'	7.79'	14.88'	N32°49'44"W
C97	10.00'	55°22'00"	9.66'	5.25'	9.29'	N77°49'44"W
C98	5.00'	90°00'00"	7.85'	5.00'	7.07'	S29°29'16"W

ACCESS EASEMENT LINE TABLE		
LINE	LENGTH	BEARING
L276	34.26'	N74°29'16"E
L277	32.09'	N74°29'16"E
L278	31.62'	S50°08'44"E
L279	73.75'	N82°14'37"E
L280	47.80'	N74°29'16"E
L281	34.88'	N70°38'26"E
L282	78.23'	N34°23'06"E
L283	75.55'	N15°30'44"W
L284	37.61'	N22°41'14"E
L285	32.98'	N74°29'16"E
L286	37.61'	S22°41'14"W
L287	75.55'	S15°30'44"E
L288	78.23'	S34°23'06"W
L289	34.88'	S70°38'26"W
L290	47.80'	S74°29'16"W
L291	73.74'	S82°14'37"W
L292	35.82'	N50°08'44"W

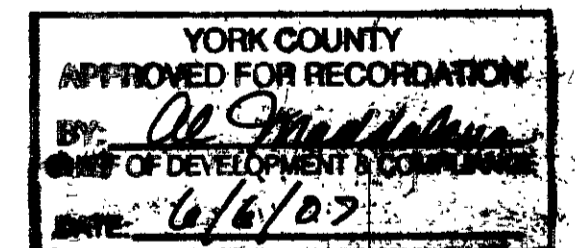
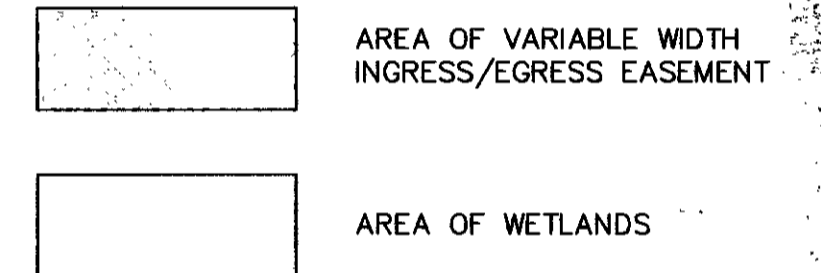


DETAIL SCALE: 1"=20'

PLAT OF EASEMENTS
 PARCELS B-3A, B-3B, B-3C, B-3D AND B-3E
 "SUBDIVISION OF THE PROPERTY OF BULIFANTS, L.P.
 PARCEL B-3 AND BMP NO. 3"
 INSTRUMENT #050025933
 BRUTON MAGISTERIAL DISTRICT
 COUNTY OF YORK, VIRGINIA

DATE: 09/05/06 SHEET 6 OF 10 SCALE: 1"=60'
 PROJECT NO: 31392.01 DRAWN BY: DWP

VHB Vanasse Hangen Brustlin, Inc.
 Transportation Land Development Environmental Services
 11832 Rock Landing Drive, Suite 207
 Newport News, Virginia 23606-4231
 (757) 873-3386 • FAX (757) 873-0737



State of Virginia
 County Of York

IN THE CLERK'S OFFICE OF THE CIRCUIT COURT FOR THE COUNTY OF YORK-POQUOSON,
 THE 7th DAY OF June, 2007 THIS MAP WAS PRESENTED AND ADMITTED
 TO RECORD AS THE LAW DIRECTS AS INSTRUMENT NUMBER **LE007013046**
 9:55 A.M.

TESTE: Lynn S. Jenkins
 CLERK
 BY: Andrew M. [Signature]