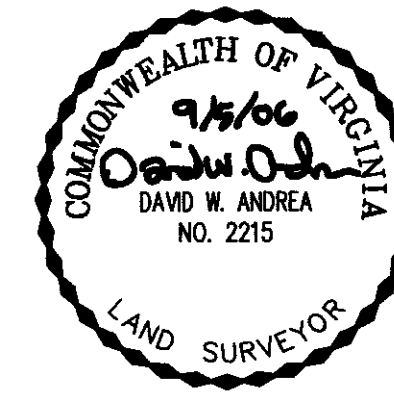


MATCHLINE - SEE SHEET 8

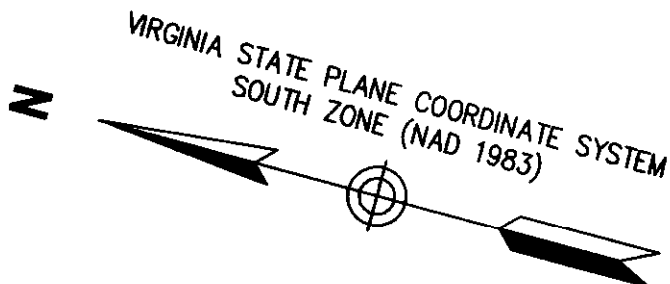
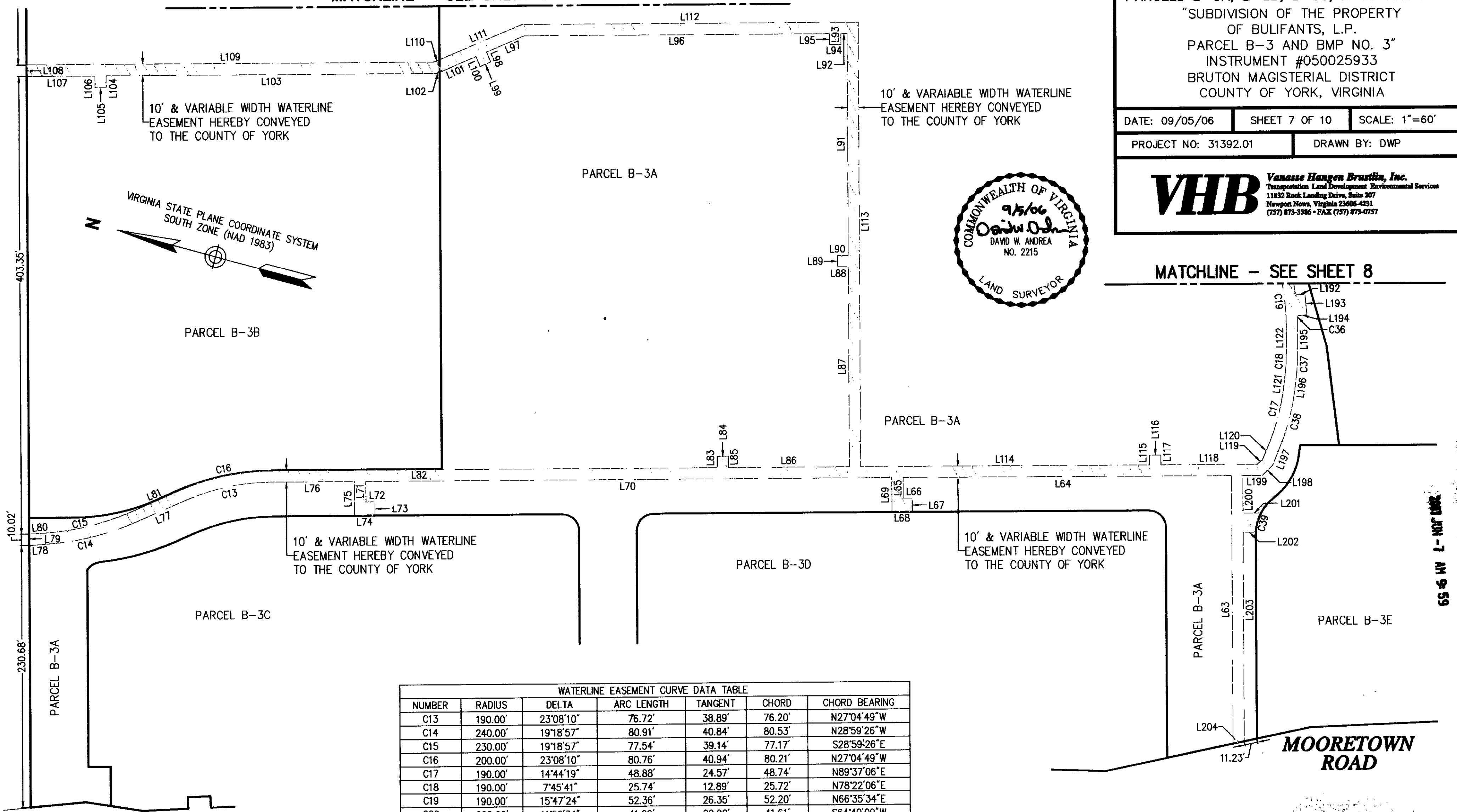
PLAT OF EASEMENTS  
 PARCELS B-3A, B-3B, B-3C, B-3D AND B-3E  
 "SUBDIVISION OF THE PROPERTY  
 OF BULFANTS, L.P.  
 PARCEL B-3 AND BMP NO. 3"  
 INSTRUMENT #050025933  
 BRUTON MAGISTERIAL DISTRICT  
 COUNTY OF YORK, VIRGINIA

DATE: 09/05/06 SHEET 7 OF 10 SCALE: 1"=60'  
 PROJECT NO: 31392.01 DRAWN BY: DWP

**VHB** Vanasse Hangen Brustlin, Inc.  
 Transportation Land Development Environmental Services  
 11832 Back Landing Drive, Suite 207  
 Newport News, Virginia 23606-4231  
 (757) 875-3386 • FAX (757) 875-0757



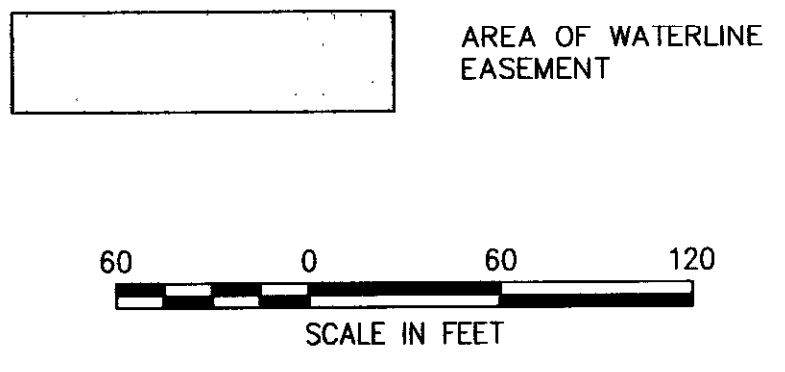
MATCHLINE - SEE SHEET 8



**MOORETOWN ROAD**

**MOORETOWN ROAD**

WATERLINE EASEMENT CURVE DATA TABLE						
NUMBER	RADIUS	DELTA	ARC LENGTH	TANGENT	CHORD	CHORD BEARING
C13	190.00'	23°08'10"	76.72'	38.89'	76.20'	N27°04'49"W
C14	240.00'	19°18'57"	80.91'	40.84'	80.53'	N28°59'26"W
C15	230.00'	19°18'57"	77.54'	39.14'	77.17'	S28°59'26"E
C16	200.00'	23°08'10"	80.76'	40.94'	80.21'	N27°04'49"W
C17	190.00'	14°44'19"	48.88'	24.57'	48.74'	N89°37'06"E
C18	190.00'	7°45'41"	25.74'	12.89'	25.72'	N78°22'06"E
C19	190.00'	15°47'24"	52.36'	26.35'	52.20'	N66°35'34"E
C20	200.00'	11°56'34"	41.69'	20.92'	41.61'	S64°40'09"W
C21	190.00'	8°19'15"	27.59'	13.82'	27.57'	N66°28'48"E
C22	190.00'	5°25'44"	18.00'	9.01'	18.00'	N37°06'19"E
C23	190.00'	4°54'01"	16.25'	8.13'	16.25'	N13°03'34"W
C24	200.00'	4°25'38"	15.45'	7.73'	15.45'	S13°17'46"E
C25	190.00'	6°52'07"	22.78'	11.40'	22.76'	N19°14'00"E
C26	190.00'	8°40'02"	28.74'	14.40'	28.71'	N11°10'43"W
C27	200.00'	4°59'49"	17.44'	8.73'	17.44'	S09°03'14"E
C28	200.00'	6°52'07"	23.98'	12.00'	23.96'	N19°14'00"E
C29	190.00'	4°25'38"	14.68'	7.34'	14.68'	S13°17'46"E
C30	200.00'	4°54'01"	17.11'	8.56'	17.10'	N13°03'34"W
C31	200.00'	5°25'44"	18.95'	9.48'	18.94'	N37°06'19"E
C32	200.00'	8°19'15"	29.05'	14.55'	29.02'	N66°28'48"E
C33	190.00'	6°01'02"	19.95'	9.99'	19.94'	S67°37'55"W
C34	180.00'	5°55'32"	18.62'	9.32'	18.61'	S61°39'38"W
C35	200.00'	8°21'03"	29.15'	14.60'	29.12'	N62°52'24"E
C36	200.00'	2°11'10"	7.63'	3.82'	7.63'	N73°23'41"E
C37	200.00'	7°45'41"	27.09'	13.57'	27.07'	N78°22'06"E
C38	200.00'	14°44'19"	51.45'	25.87'	51.31'	N89°37'06"E
C39	39.50'	25°44'04"	17.74'	9.02'	17.59'	S89°24'07"W



YORK COUNTY  
 APPROVED FOR RECORDATION  
 BY: *[Signature]*  
 CHIEF OF DEVELOPMENT & COMPLIANCE  
 DATE: 6/6/07

State Of Virginia  
 County Of York  
 IN THE CLERK'S OFFICE OF THE CIRCUIT COURT FOR THE COUNTY OF YORK-POQUOSON,  
 THE 7th DAY OF June, 2006, THIS MAP WAS PRESENTED AND ADMITTED  
 TO RECORD AS THE LAW DIRECTS AS INSTRUMENT NUMBER LC010013046  
 9:55 am  
 TESTE: Lynn S Jenkins  
 CLERK  
 BY: Michael M. Chirvanov