

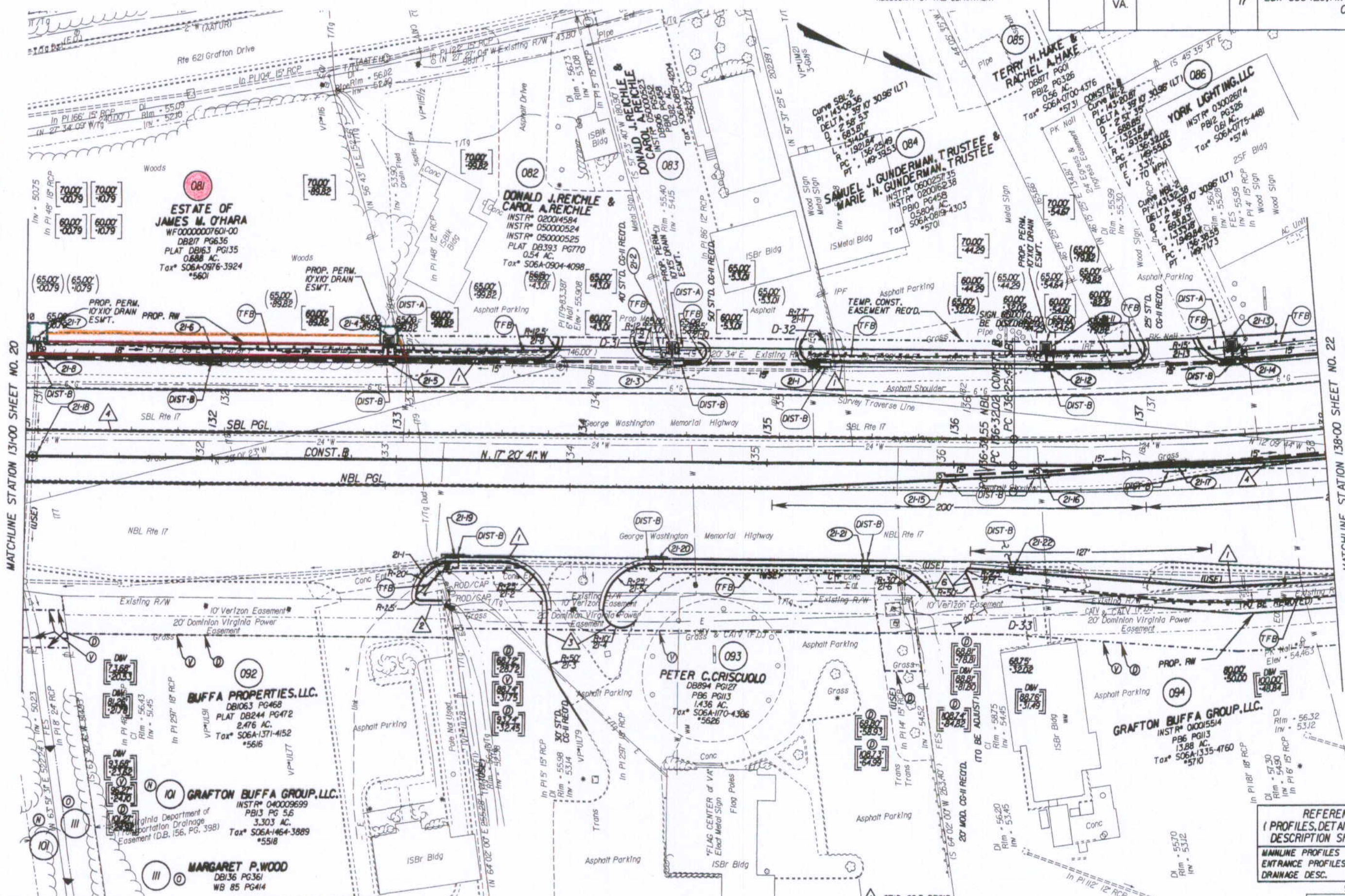
SURVEYED BY: BOB HARRON (751) 253-5137
 SUPERVISED BY: PAUL BYNUM (751) 925-2557
 DESIGNED BY: J.D. WINSTEAD (751) 925-2556
 HAMPTON ROADS DISTRICT DESIGN UNIT

PAGE 2

DESIGN FEATURES RELATING TO CONSTRUCTION OR TO REGULATION AND CONTROL OF TRAFFIC MAY BE SUBJECT TO CHANGE AS DEEMED NECESSARY BY THE DEPARTMENT

STATE	FEDERAL AID PROJECT	ROUTE	STATE PROJECT	SHEET NO.
VA.		17	6017-099-129, RW-201, C-501	21

THESE PLANS ARE UNFINISHED AND ARE NOT TO BE USED FOR ANY TYPE OF CONSTRUCTION.



State Hwy Plat Book No. 10 Page 123
 1-P-0700/4932

NOTE: PGL DENOTES PROFILE GRADE LINE
 NOTE: SEE GENERAL NOTES FOR E&S LEGEND
 () DENOTES DRAINAGE STRUCTURE NUMBER

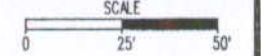
Note: Figures in brackets and dot-dashed lines denote Permanent Easements.
 (V) Denotes variable easement required for Verizon Virginia
 (D) Denotes variable easement required for Dominion Virginia Power

Note: Figures in parentheses and dot-dot-dashed lines denote Temporary Easements.

- (C) Denotes Construction Limits In Cuts
- (E) Denotes Construction Limits In Fills
- 1 ST'D. CG-7 REQ'D.
- 2 ST'D. CG-6 REQ'D.
- 3 ST'D. CG-2 REQ'D.
- 4 ST'D. MS-2 REQ'D.
- 6 ST'D. CG-3 REQ'D.

REFERENCES
 (PROFILES, DETAIL & DRAINAGE DESCRIPTION SHEETS, ETC.)

MAINLINE PROFILES	21A
ENTRANCE PROFILES	24H
DRAINAGE DESC.	2H(1) - 2H(7)



PLAN NO.	PROJECT	FILE NO.	SHEET NO.
	6017-099-129		21

5/18/2007 8:40:00