

SURVEYED BY: BOB HARRON (157) 925-5137
 SUPERVISED BY: P.H. BYNUM (752) 925-2557
 DESIGNED BY: M.L. WINSTEAD (752) 925-2556
 HAMPTON ROADS DISTRICT DESIGN UNIT

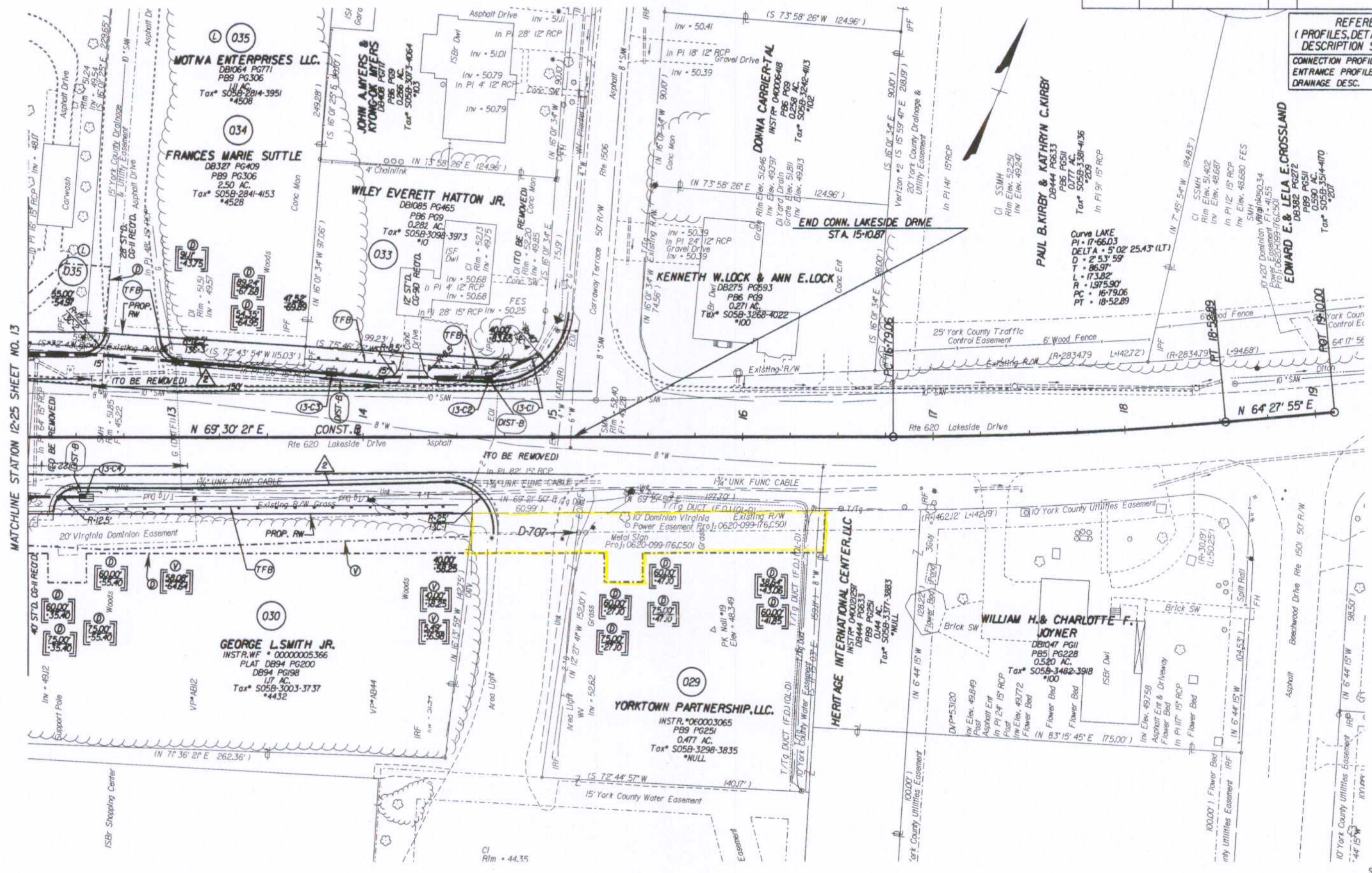
DESIGN FEATURES RELATING TO CONSTRUCTION OR TO REGULATION AND CONTROL OF TRAFFIC MAY BE SUBJECT TO CHANGE AS DEEMED NECESSARY BY THE DEPARTMENT

REVISED	STATE	FEDERAL AID	ROUTE	STATE	SHEET NO.
06/08/06 07/25/06	VA.		17	6017-099-129, RW-201, C-501	13C

REFERENCES
 (PROFILES, DETAIL & DRAINAGE DESCRIPTION SHEETS, ETC.)

CONNECTION PROFILES	13D
ENTRANCE PROFILES	24J
DRAINAGE DESC.	2H(1) - 2H(7)

THESE PLANS ARE UNFINISHED AND ARE NOT TO BE USED FOR ANY TYPE OF CONSTRUCTION.



Curve LAKE
 PI - 17+66.03
 DELTA - 5'02" 25.43' (LT)
 D - 2' 53' 59"
 L - 86.97'
 R - 173.82'
 PC - 16+79.06
 PT - 18+52.89

MATCHLINE STATION 12-25 SHEET NO. 13

NOTE: SEE GENERAL NOTES FOR E&S LEGEND

Notes:
 (Circles in brackets and dot - dashed lines) denote Permanent Easements.
 (V) Denotes variable easement required for Verizon Virginia
 (D) Denotes variable easement required for Dominion Virginia Power
 (C) Denotes Construction Limits In Cuts
 (F) Denotes Construction Limits In Fills
 (S) ST'D. CG-6 REOD.



PLAN NO.	PROJECT	FILE NO.	SHEET NO.
	6017-099-129		13C

State Highway Plat Book No. 10 Page 151

2/20/2007 16:00:44