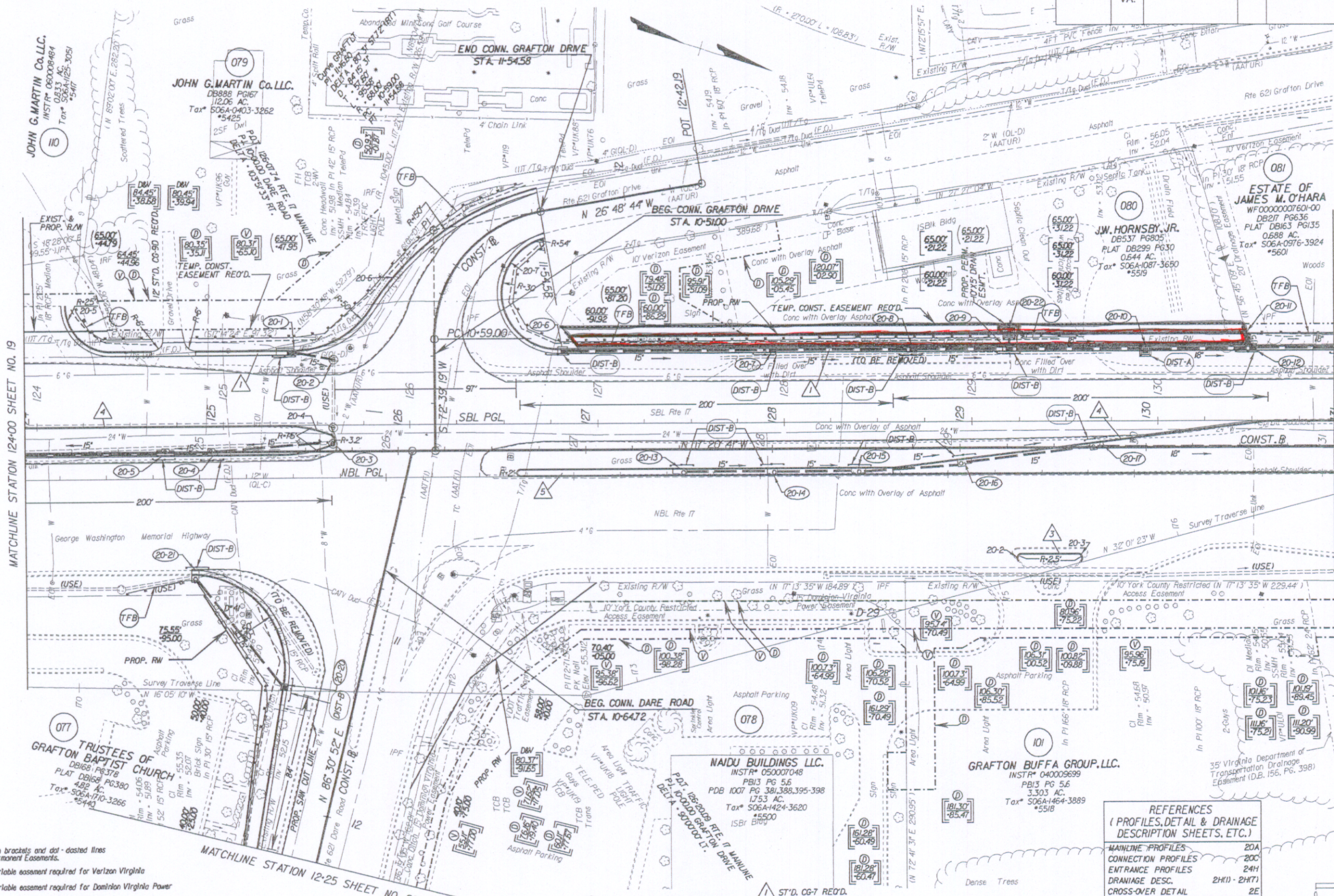


SURVEYED BY: BOB HARMON (757) 253-5137
 SUPERVISED BY: P.H. BYNUM (757) 925-2557
 DESIGNED BY: J.D. WINSTEAD (757) 925-2556
 HAMPTON ROADS DISTRICT DESIGN UNIT

DESIGN FEATURES RELATING TO CONSTRUCTION OR TO REGULATION AND CONTROL OF TRAFFIC MAY BE SUBJECT TO CHANGE AS DEEMED NECESSARY BY THE DEPARTMENT

REVISED	STATE	FEDERAL AID	ROUTE	STATE	SHEET NO.
02/06/06 03/23/06 10/31/06 05/29/07	VA.		17	6017-099-129, RW-201, C-501	20

THESE PLANS ARE UNFINISHED AND ARE NOT TO BE USED FOR ANY TYPE OF CONSTRUCTION.



Note: Figures in brackets and dot-dashed lines denote Permanent Easements.
 (V) Denotes variable easement required for Verizon Virginia
 (D) Denotes variable easement required for Dominion Virginia Power
 NOTE: PGL DENOTES PROFILE GRADE LINE
 NOTE: SEE GENERAL NOTES FOR E&S LEGEND
 (O) DENOTES DRAINAGE STRUCTURE NUMBER

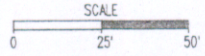
Note: Figures in parenthesis and dot-dashed lines denote Temporary Easements.

(C) Denotes Construction Limits In Cuts
 (E) Denotes Construction Limits In Fills

- 1 ST'D. CG-7 REO'D.
- 2 ST'D. CG-6 REO'D.
- 3 ST'D. CG-2 REO'D.
- 4 ST'D. WS-2 REO'D.
- 5 ST'D. WS-1A REO'D.

REFERENCES
 (PROFILES, DETAIL & DRAINAGE DESCRIPTION SHEETS, ETC.)

MAINLINE PROFILES	20A
CONNECTION PROFILES	20C
ENTRANCE PROFILES	24H
DRAINAGE DESC.	2HKD - 2HTI
CROSS-OVER DETAIL	2E



PLAN NO.	PROJECT	FILE NO.	SHEET NO.
	6017-099-129		20

State Highway Plat Book No. 10 Page 156

6/1/2007 09:52