

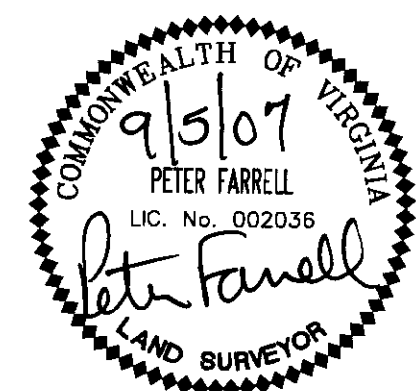
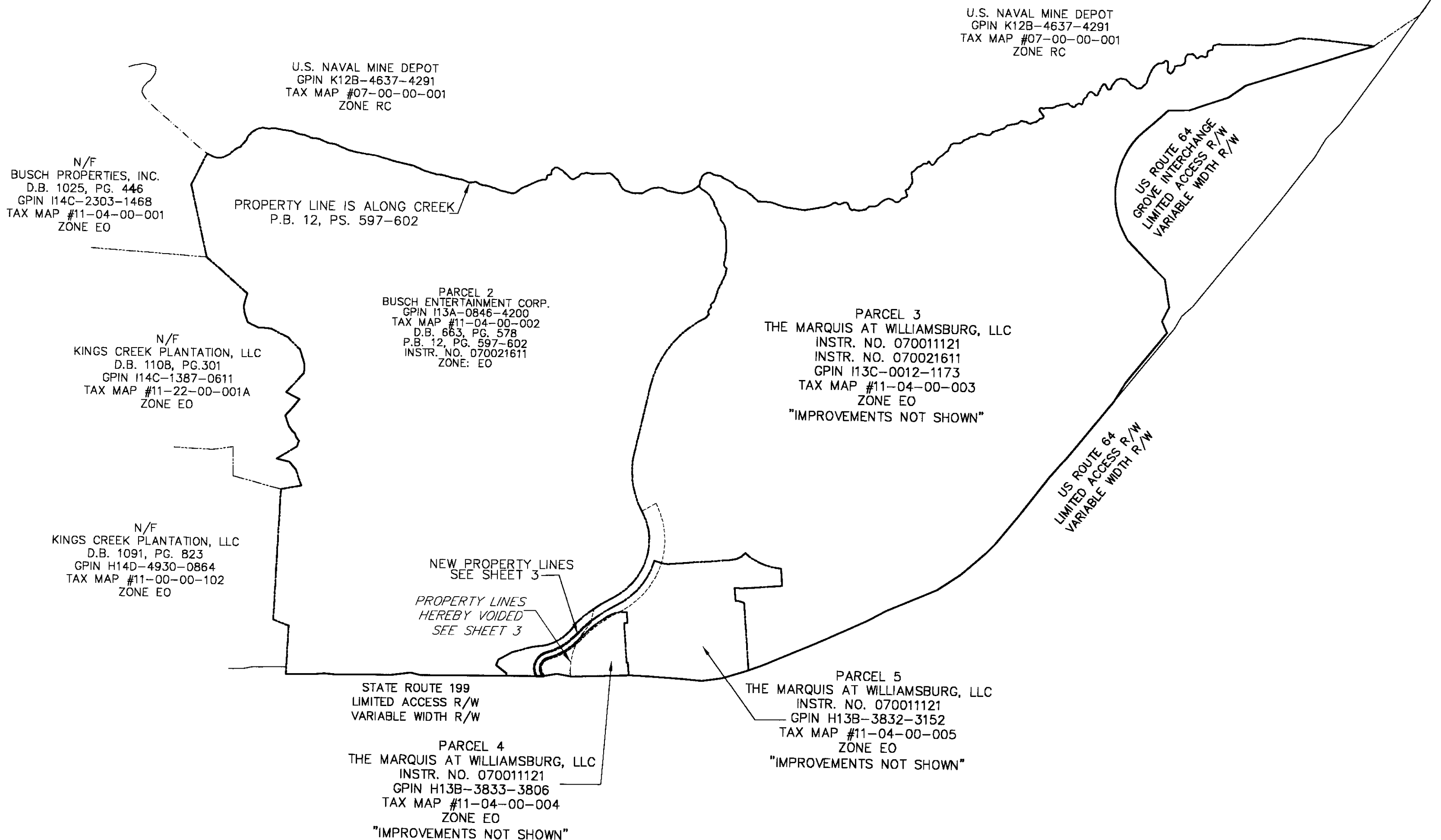
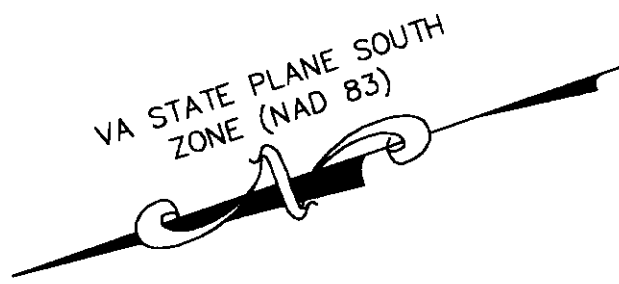
PLAT SHOWING BOUNDARY LINE ADJUSTMENT OF THE  
 PROPERTIES OF  
**THE MARQUIS AT WILLIAMSBURG, LLC,**  
 AN INDIANA LIMITED LIABILITY  
 COMPANY  
 BEING A RESUBDIVISION OF  
**PARCEL 3, PARCEL 4 AND PARCEL 5**  
**WHITTAKERS MILL TRACT**  
 (P.B. 12, PGS. 597-602)

BRUTON DISTRICT, YORK COUNTY, VIRGINIA

SCALE: 1"=600' DATE: 09/05/07  
 SHEET 2 OF 3

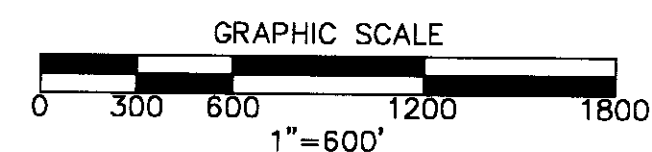


Engineers • Planners • Surveyors  
 Landscape Architects • Environmental Consultants  
 4029 IRONBOUND ROAD SUITE 100  
 WILLIAMSBURG, VIRGINIA 23188  
 (757) 253-2975 FAX: (757) 229-0049



APPROVED:  
 YORK COUNTY BOARD OF SUPERVISORS  
 BY: Al Maddalena  
 PLAT APPROVING AGENT  
 DATE: 9/19/07

STATE OF VIRGINIA, COUNTY OF YORK  
 IN THE CLERK'S OFFICE OF THE CIRCUIT COURT FOR THE  
 COUNTY OF YORK-POQUOSON THE 19 DAY OF  
Sept 2007, THIS MAP WAS PRESENTED AND  
 ADMITTED TO RECORD AS THE LAW DIRECTS AS  
 INSTRUMENT NO. 070022838 2:27pm  
 TESTE: Lynn S. Jenkins  
 CLERK  
 BY: Rachael Riedel



REFERENCES:  
 P.B. 12, PGS. 597-602  
 D.B. 663, PG. 578  
 INSTR. NO. 070011121  
 INSTR. NO. 070021611

09 SEP 19 PM 3:27