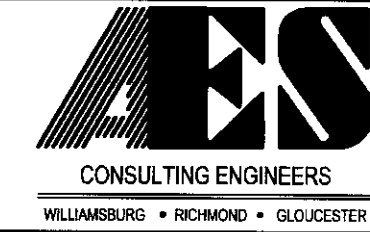


**BOUNDARY LINE ADJUSTMENT BETWEEN  
EWELL INDUSTRIAL PARK, LLC,  
A VIRGINIA LIMITED LIABILITY COMPANY  
AND  
JOHN TYLER INVESTMENT GROUP, LTD,  
A VIRGINIA LIMITED LIABILITY COMPANY**

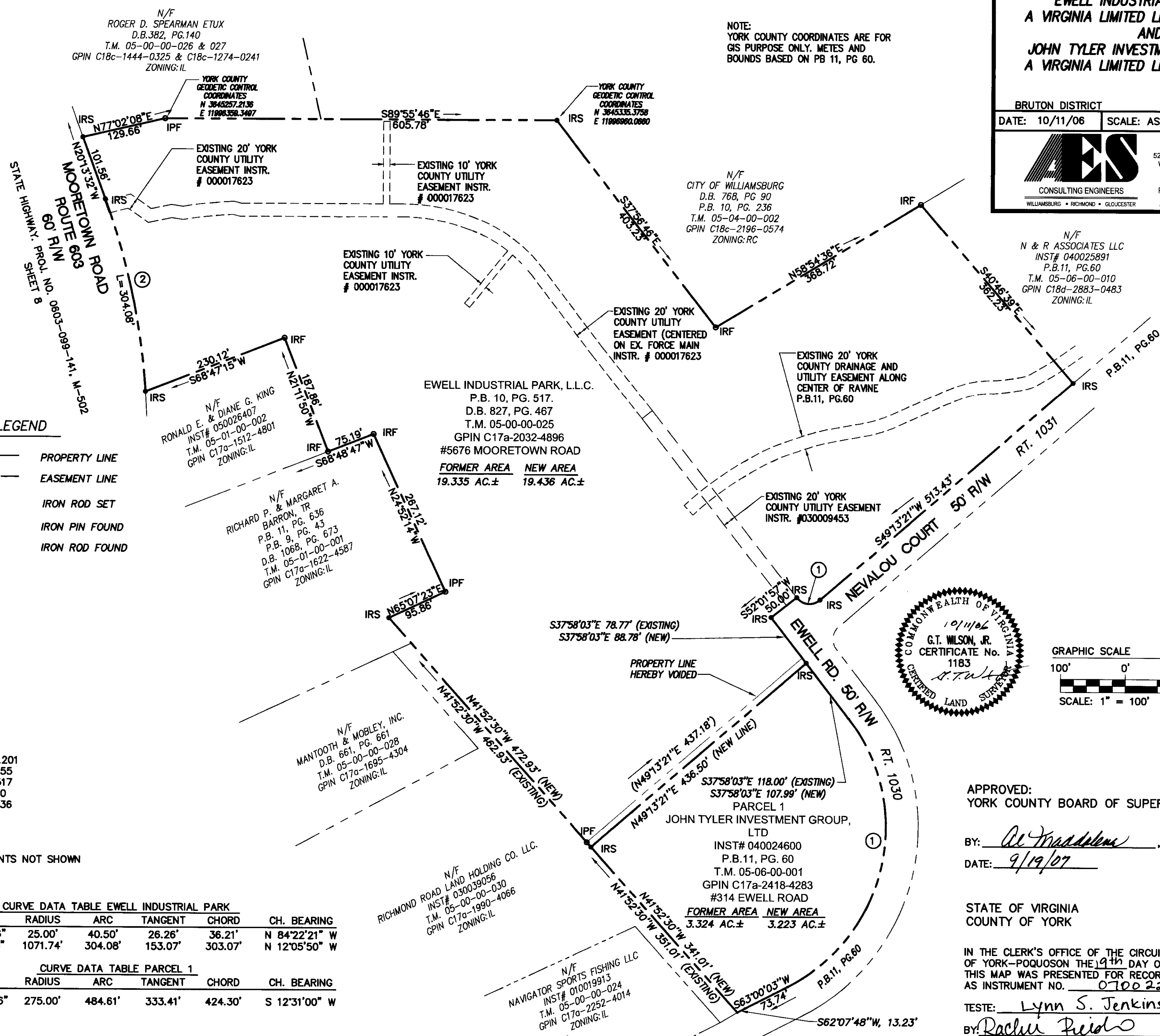
BRUTON DISTRICT YORK COUNTY, VIRGINIA  
DATE: 10/11/06 SCALE: AS NOTED DRAWN: LBA



5248 Olde Towne Road, Suite 1  
Williamsburg, Virginia 23188  
(757) 253-0040  
Fax (757) 220-8994  
Project No. 8055-15 Drawing No. 2 OF 2

N/F  
N & R ASSOCIATES LLC  
INST# 040025891  
P.B.11, PG.60  
T.M. 05-06-00-010  
GPIN C18d-2883-0483  
ZONING:IL

NOTE:  
YORK COUNTY COORDINATES ARE FOR  
GIS PURPOSE ONLY. METES AND  
BOUNDS BASED ON PB 11, PG 60.



**LEGEND**

- PROPERTY LINE
- EASEMENT LINE
- IRS° IRON ROD SET
- IPF° IRON PIN FOUND
- IRF° IRON ROD FOUND

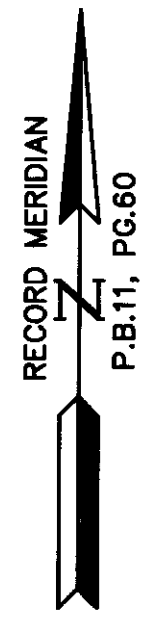
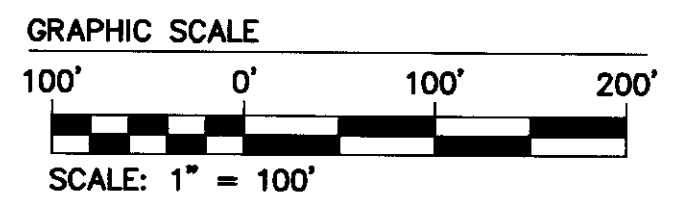
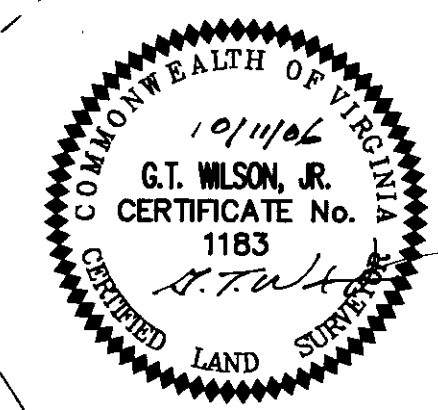
REF: D.B.519, PG.201  
P.B.10, PG.155  
D.B.10, PG.517  
P.B.11, PG.60  
P.B.11, PG.636

NOTE: IMPROVEMENTS NOT SHOWN

CURVE DATA TABLE EWELL INDUSTRIAL PARK						
NO.	DELTA	RADIUS	ARC	TANGENT	CHORD	CH. BEARING
1	92°48'36"	25.00'	40.50'	26.26'	36.21'	N 84°22'21" W
2	16°15'23"	1071.74'	304.08'	153.07'	303.07'	N 12°05'50" W

CURVE DATA TABLE PARCEL 1						
NO.	DELTA	RADIUS	ARC	TANGENT	CHORD	CH. BEARING
1	100°58'06"	275.00'	484.61'	333.41'	424.30'	S 12°31'00" W



APPROVED:  
YORK COUNTY BOARD OF SUPERVISORS  
BY: Al Maddalena, PLAT APPROVING AGENT  
DATE: 9/19/07

STATE OF VIRGINIA  
COUNTY OF YORK  
IN THE CLERK'S OFFICE OF THE CIRCUIT COURT FOR THE COUNTY OF YORK-POQUOSON THE 19th DAY OF Sept, 2007.  
THIS MAP WAS PRESENTED FOR RECORD AS THE LAW DIRECTS, AS INSTRUMENT NO. 070022839 3:27pm.  
TESTE: Lynn S. Jenkins, CLERK  
BY: Rachin Field

2007 SEP 19 PM 3:28