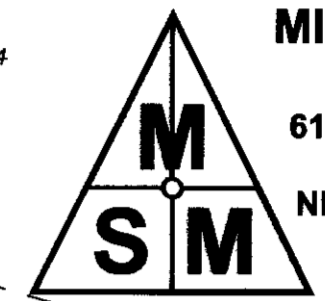


SUBDIVISION PLAT OF AMBRITS POINT

BETHEL DISTRICT
COUNTY OF YORK, VIRGINIA

DATE: DECEMBER 6, 2006 SCALE: 1"=50'
REVISED: FEBRUARY 27, 2007
PROJECT NUMBER: 05-045
SHEET 2 OF 3

MICHAEL SURVEYING & MAPPING, P.C.
610 THIMBLE SHOALS BLVD
SUITE 203-D
NEWPORT NEWS, VA. 23606
TEL 757.873.1762
FAX 757.873.1772



TIDEMILL ESTATES
SECTION 3
COMMON AREA #2
TAX PARCEL #30-17-03-000A2

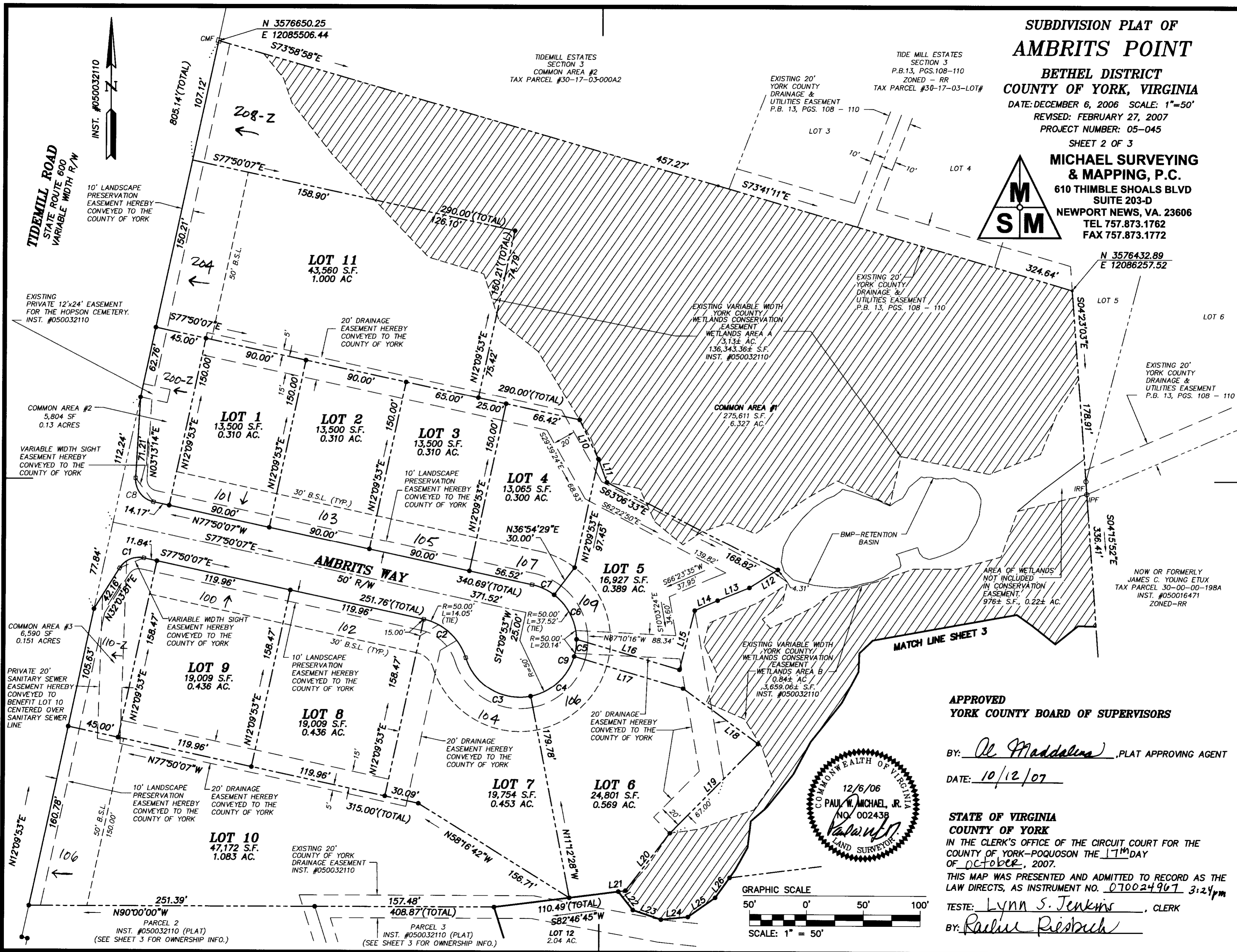
TIDE MILL ESTATES
SECTION 3
P.B.13, PGS.108-110
ZONED - RR
TAX PARCEL #30-17-03-LOT#

EXISTING 20'
YORK COUNTY
DRAINAGE &
UTILITIES EASEMENT
P.B. 13, PGS. 108 - 110

EXISTING 20'
YORK COUNTY
DRAINAGE &
UTILITIES EASEMENT
P.B. 13, PGS. 108 - 110

EXISTING 20'
YORK COUNTY
DRAINAGE &
UTILITIES EASEMENT
P.B. 13, PGS. 108 - 110

NOW OR FORMERLY
JAMES C. YOUNG ETUX
TAX PARCEL 30-00-00-198A
INST. #050016471
ZONED-RR



TIDEMILL ROAD
STATE ROUTE 600
VARIABLE WIDTH R/W

10' LANDSCAPE
PRESERVATION
EASEMENT HEREBY
CONVEYED TO THE
COUNTY OF YORK

EXISTING
PRIVATE 12'x24' EASEMENT
FOR THE HOPSON CEMETERY.
INST. #050032110

COMMON AREA #2
5,804 SF
0.13 ACRES

VARIABLE WIDTH SIGHT
EASEMENT HEREBY
CONVEYED TO THE
COUNTY OF YORK

COMMON AREA #3
6,590 SF
0.151 ACRES

PRIVATE 20'
SANITARY SEWER
EASEMENT HEREBY
CONVEYED TO
BENEFIT LOT 10
CENTERED OVER
SANITARY SEWER
LINE

VARIABLE WIDTH SIGHT
EASEMENT HEREBY
CONVEYED TO THE
COUNTY OF YORK

10' LANDSCAPE
PRESERVATION
EASEMENT HEREBY
CONVEYED TO THE
COUNTY OF YORK

20' DRAINAGE
EASEMENT HEREBY
CONVEYED TO THE
COUNTY OF YORK

EXISTING 20'
COUNTY OF YORK
DRAINAGE EASEMENT
INST. #050032110

20' DRAINAGE
EASEMENT HEREBY
CONVEYED TO THE
COUNTY OF YORK

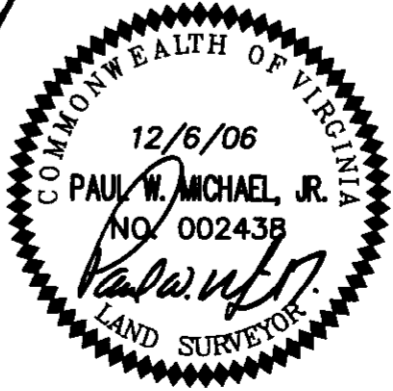
10' LANDSCAPE
PRESERVATION
EASEMENT HEREBY
CONVEYED TO THE
COUNTY OF YORK

20' DRAINAGE
EASEMENT HEREBY
CONVEYED TO THE
COUNTY OF YORK

EXISTING VARIABLE WIDTH
YORK COUNTY
WETLANDS CONSERVATION
EASEMENT
WETLANDS AREA A
3.13± AC.
136,343.36± S.F.
INST. #050032110

COMMON AREA #1
275,611 S.F.
6.327 AC.

EXISTING VARIABLE WIDTH
YORK COUNTY
WETLANDS CONSERVATION
EASEMENT
WETLANDS AREA B
0.84± AC.
3,659.06± S.F.
INST. #050032110



MATCH LINE SHEET 3

APPROVED
YORK COUNTY BOARD OF SUPERVISORS

BY: *Al Maddalena*, PLAT APPROVING AGENT

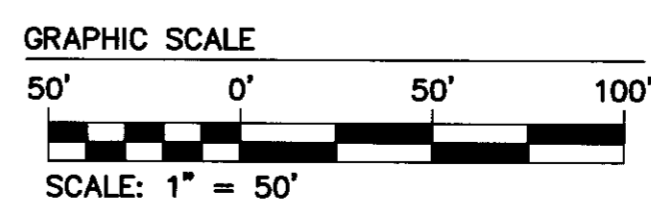
DATE: 10/12/07

STATE OF VIRGINIA
COUNTY OF YORK
IN THE CLERK'S OFFICE OF THE CIRCUIT COURT FOR THE
COUNTY OF YORK-POQUOSON THE 1TH DAY
OF October, 2007.

THIS MAP WAS PRESENTED AND ADMITTED TO RECORD AS THE
LAW DIRECTS, AS INSTRUMENT NO. 070024967 3:24pm

TESTE: *Lynn S. Jenkins*, CLERK

BY: *Rachel Riebsch*



PARCEL 2
INST. #050032110 (PLAT)
(SEE SHEET 3 FOR OWNERSHIP INFO.)

PARCEL 3
INST. #050032110 (PLAT)
(SEE SHEET 3 FOR OWNERSHIP INFO.)

LOT 12
2.04 AC.

2007 OCT 17 PM 3:21