

SURVEYED BY: BOB HARMON (757) 253-5137
SUPERVISED BY: P.H. BRUM (757) 925-2557
DESIGNED BY: M.D. WINSTEAD (757) 925-2556
HAMPTON ROADS DISTRICT DESIGN UNIT

Instr# 070026553 State Hwy Plat Book # 60 Pg 190

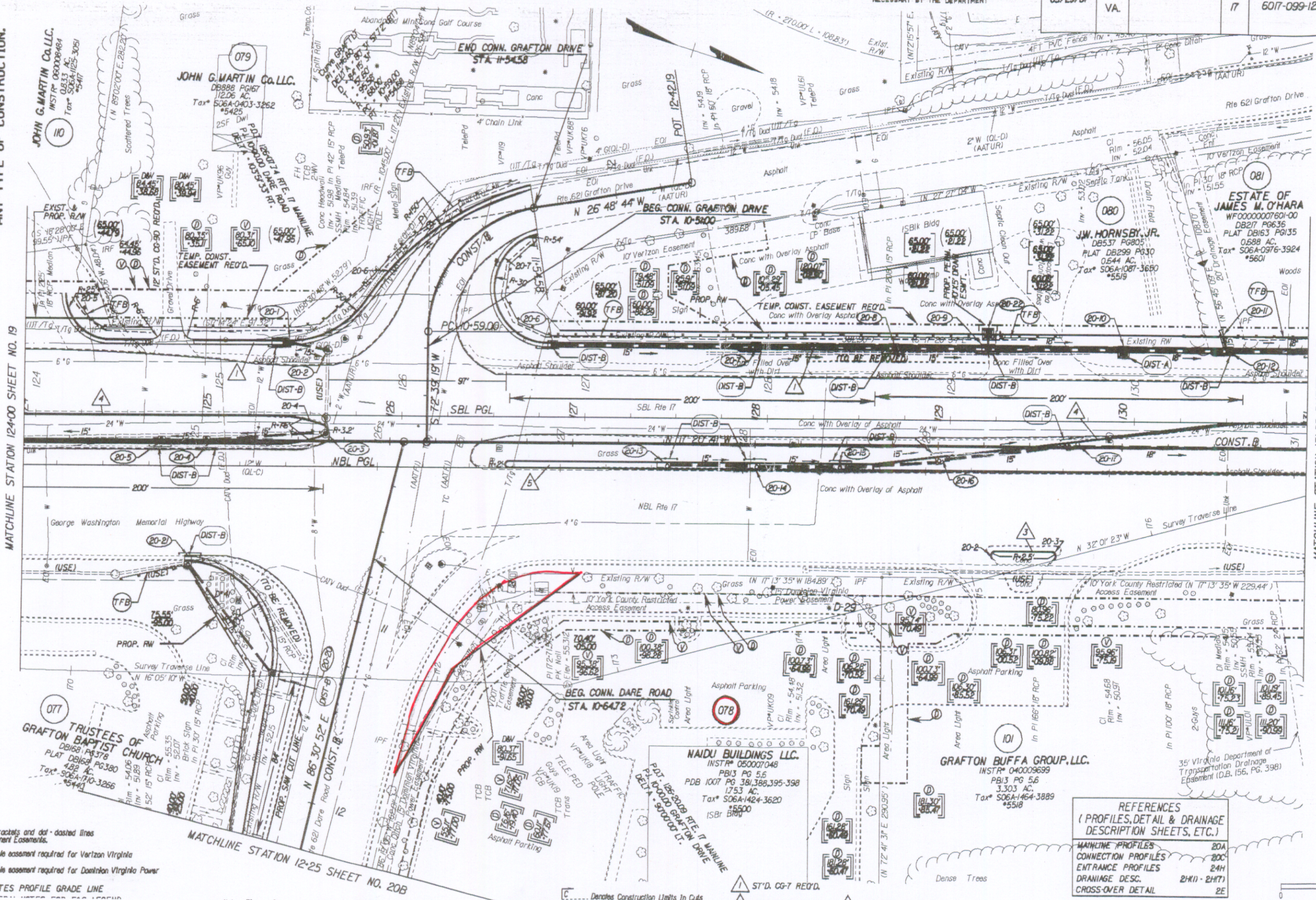
DESIGN FEATURES RELATING TO CONSTRUCTION OR TO REGULATION AND CONTROL OF TRAFFIC MAY BE SUBJECT TO CHANGE AS DEEMED NECESSARY BY THE DEPARTMENT

REVISED	STATE	FEDERAL AID	ROUTE	STATE	PROJECT	SHEET NO.
02/06/06 03/23/06 10/31/06 05/29/07	VA.		17		6017-099-129, RW-201, C-501	20

THESE PLANS ARE UNFINISHED AND ARE NOT TO BE USED FOR ANY TYPE OF CONSTRUCTION.

MATCHLINE STATION 124+00 SHEET NO. 19

MATCHLINE STATION 131+00 SHEET NO. 21



Figures in brackets and dot-dashed lines denote Permanent Easements.

notes variable easement required for Verizon Virginia

notes variable easement required for Dominion Virginia Power

PGL DENOTES PROFILE GRADE LINE

MATCHLINE STATION 12+25 SHEET NO. 20B

Denotes Construction Limits In Cuts

ST'D. CG-7 REQ'D.

ST'D. CG-6 REQ'D.

ST'D. MS-2 REQ'D.

REFERENCES
(PROFILES, DETAIL & DRAINAGE DESCRIPTION SHEETS, ETC.)

MAINLINE PROFILES	20A
CONNECTION PROFILES	20C
ENTRANCE PROFILES	24H
DRAINAGE DESC.	24H1 - 24H7
CROSS-OVER DETAIL	2E

SCALE
0 25' 50'