

# OAK RIDGE

## AT ENDVIEW PLANTATION

### SECTION ONE

(LOTS 1&2)

NELSON DISTRICT  
YORK COUNTY, VIRGINIA

ADPA A.D. POTTS & ASSOCIATES, INC.  
11524 JEFFERSON AVENUE  
NEWPORT NEWS, VIRGINIA 23601  
PHONE: (757) 595-4610  
1" = 50' NOVEMBER 14, 2007

WATER QUALITY / IMPERVIOUS AREA NOTE: TO MEET WATER QUALITY STANDARDS, IMPERVIOUS LEVELS ARE NOT TO EXCEED 30% ON THE YORK COUNTY LOTS AND NOT TO EXCEED 36% ON THE NEWPORT NEWS LOTS. ADDITIONAL IMPERVIOUSNESS WILL REQUIRE BEST MANAGEMENT PRACTICES TO MEET WATER QUALITY GUIDELINES.

ALLOWABLE IMPERVIOUSNESS PER LOT

LOT 1	- 4052 SQ FT (30%)
LOT 2	- 4050 SQ FT (30%)
LOT 3	- 5670 SQ FT (36%)(AFTER FUTURE DEDICATION)
LOT 4	- 5328 SQ FT (36%)(AFTER FUTURE DEDICATION)
LOT 5	- 4987 SQ FT (36%)(AFTER FUTURE DEDICATION)
LOT 6	- 4646 SQ FT (36%)(AFTER FUTURE DEDICATION)
LOT 7	- 4320 SQ FT (36%)(AFTER FUTURE DEDICATION)
LOT 8	- 4830 SQ FT (36%)(AFTER FUTURE DEDICATION)

N or F  
LAWANDA L. & BONNIE E. ECHOLES  
DB 2114 PG 560 (NEWPORT NEWS)  
TAX MAP# 002.00-01-21  
ZONED R2

N or F  
THE ECHOLES TRUST  
DB 2031 PG 886  
TAX MAP# 002.00-01-20  
ZONED R2

N or F  
P.M. CURTIS  
DB 712 PG 29  
GPIN# M10A-1843-3946  
TAX MAP# 17-00-00-006  
ZONED R13

20' DRAINAGE EASEMENT  
HEREBY CONVEYED TO  
YORK COUNTY

20' DRAINAGE & UTILITY EASEMENT  
HEREBY CONVEYED TO  
CITY OF NEWPORT NEWS

10' PRIVATE DRAINAGE  
EASEMENT HEREBY  
CONVEYED FOR THE  
BENEFIT OF LOTS 1 & 2

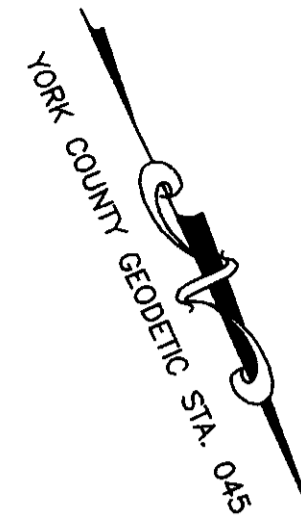
10' LANDSCAPE  
PRESERVATION EASEMENT  
HEREBY CONVEYED TO  
YORK COUNTY

N or F  
F. M. ALFRED  
INSTRUMENT #990021234  
GPIN# M10A-1922-4260  
TAX MAP# 17-00-00-009A  
ZONED R13

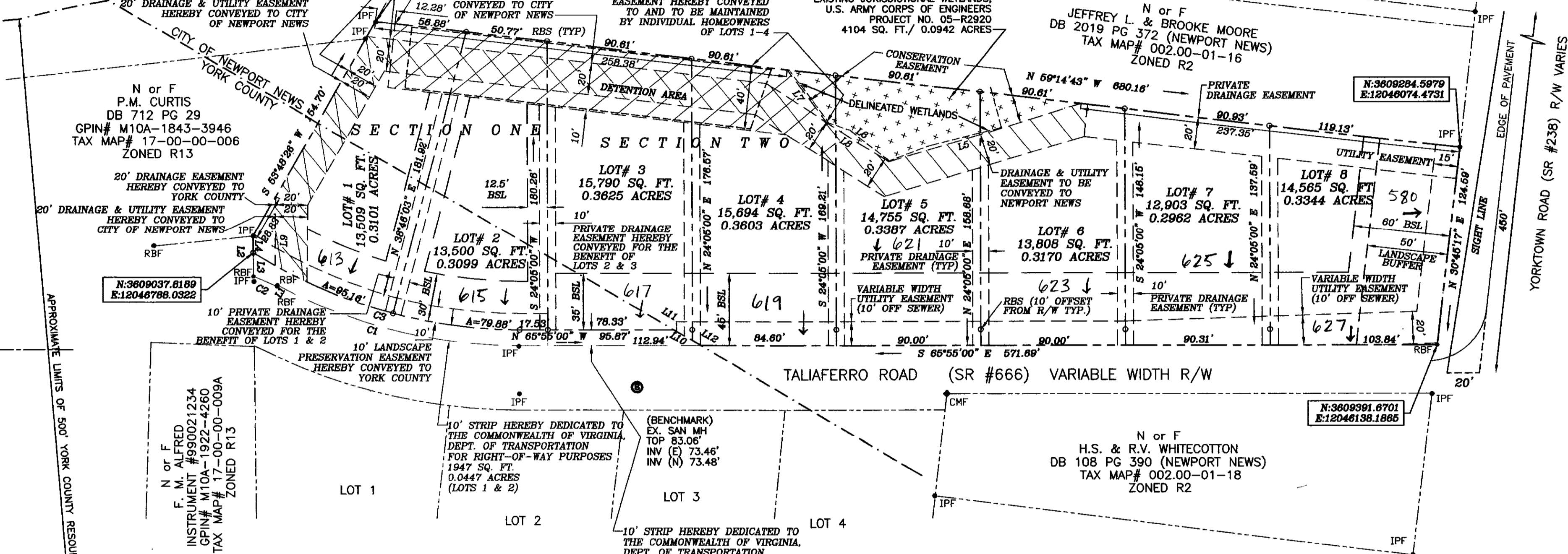
THE SNOWDEN SUBDIVISION  
INSTRUMENT #060027208  
ZONED R-13  
TAX MAP# 17-18-00-LOT#

APPROXIMATE LIMITS OF 500' YORK COUNTY RESOURCE MANAGEMENT AREA

APPROXIMATE LIMITS OF 100' YORK COUNTY RESOURCE PROTECTION AREA



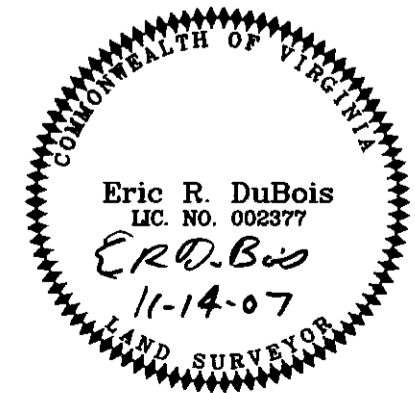
SHEET 2 OF 2



- LEGEND**
- DRAINAGE EASEMENTS HEREBY CONVEYED TO YORK COUNTY
  - DRAINAGE & UTILITY EASEMENTS HEREBY CONVEYED TO NEWPORT NEWS
  - DETENTION AREA MAINTENANCE EASEMENT HEREBY CONVEYED TO AND TO BE MAINTAINED BY INDIVIDUAL HOMEOWNERS OF LOTS 1-4
  - CONSERVATION EASEMENT HEREBY CONVEYED TO NEWPORT NEWS

LINE	BEARING	DISTANCE
L1	N 52°03'56" E	0.81'
L2	S 23°29'05" W	25.35'
L3	S 23°29'05" W	14.79'
L4	S 23°29'05" W	10.55'
L5	S 82°44'53" E	125.03'
L6	S 33°13'19" E	46.31'
L7	S 12°51'59" E	40.81'
L8	S 33°13'19" E	90.85'
L9	N 24°51'00" E	43.87'
L10	N 35°33'17" W	19.78'
L11	N 35°33'17" W	13.52'
L12	N 35°33'17" W	6.26'

CURVE	DELTA ANGLE	RADIUS	ARC LENGTH	CHORD LENGTH	CHORD BEARING
C1	27°59'45"	321.70'	157.19'	155.83'	S 51°55'08" E
C2	04°59'50"	180.00'	15.70'	15.69'	N 42°50'46" W
C3	32°10'31"	311.70'	175.04'	172.75'	S 49°49'46" E



APPROVED  
YORK COUNTY BOARD OF SUPERVISORS  
BY: *Al Maddalena*  
PLAT APPROVING AGENT  
DATE: 12/19/07

STATE OF VIRGINIA  
COUNTY OF YORK  
IN THE CLERK'S OFFICE OF THE CIRCUIT COURT  
FOR THE COUNTY OF YORK-POQUOSON, ON  
THIS 20th DAY OF December, 2007  
THIS MAP WAS PRESENTED AND ADMITTED TO RECORD  
AS THE LAW DIRECTS, AS INSTRUMENT 10:40am  
NUMBER LR070029563  
TESTE: Lynn S. Mendibur  
CLERK  
BY: *Valerie Lynn Tablin*  
DEPUTY CLERK

2007 DEC 20 AM 10:41