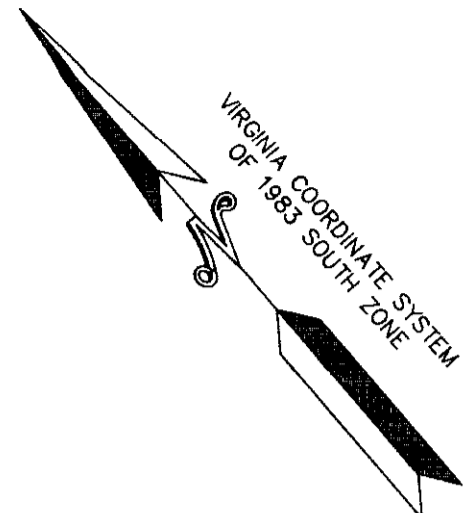
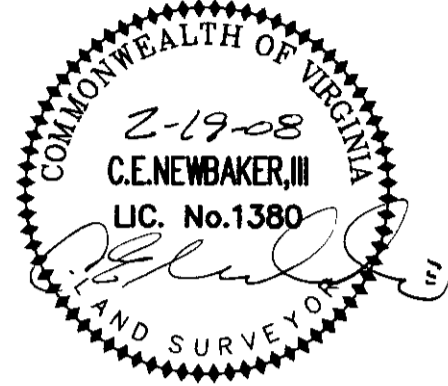


I CERTIFY THAT THIS PLAT IS ACCURATE AND COMPLIES WITH THE PROVISIONS OF SECTION 55-79.58(A) OF THE CODE OF VIRGINIA OF 1950 AS AMENDED AND ALL UNITS SHOWN HEREON HAVE BEEN SUBSTANTIALLY COMPLETED.

SIGNED: *C.E. Newbaker, III* DATE: 2-19-08
C.E. NEWBAKER, III L.S.# 1380

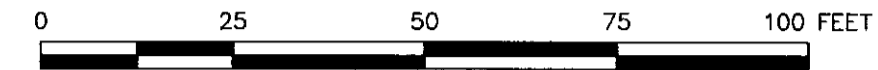


LOT 4-A
RESUBDIVISION OF LOTS 4-A & 4-B
RESUBDIVISION OF LOT 4
PLAT SHOWING THE SUBDIVISION
OF THE PROPERTY OF E.E. AMORY
(P.B. 12, P. 500)

NOW OR FORMERLY
KENNETH DALE MOORE
TAX MAP 29-04-00-004A
GPIN: S07C-0262-0786
D.B. 928, PG. 454
ZONED: GB

EXHIBIT "2"
PLAT OF
Victory Trace
A CONDOMINIUM

NELSON DISTRICT - YORK COUNTY, VIRGINIA
SCALE: 1" = 25' JANUARY 28, 2008

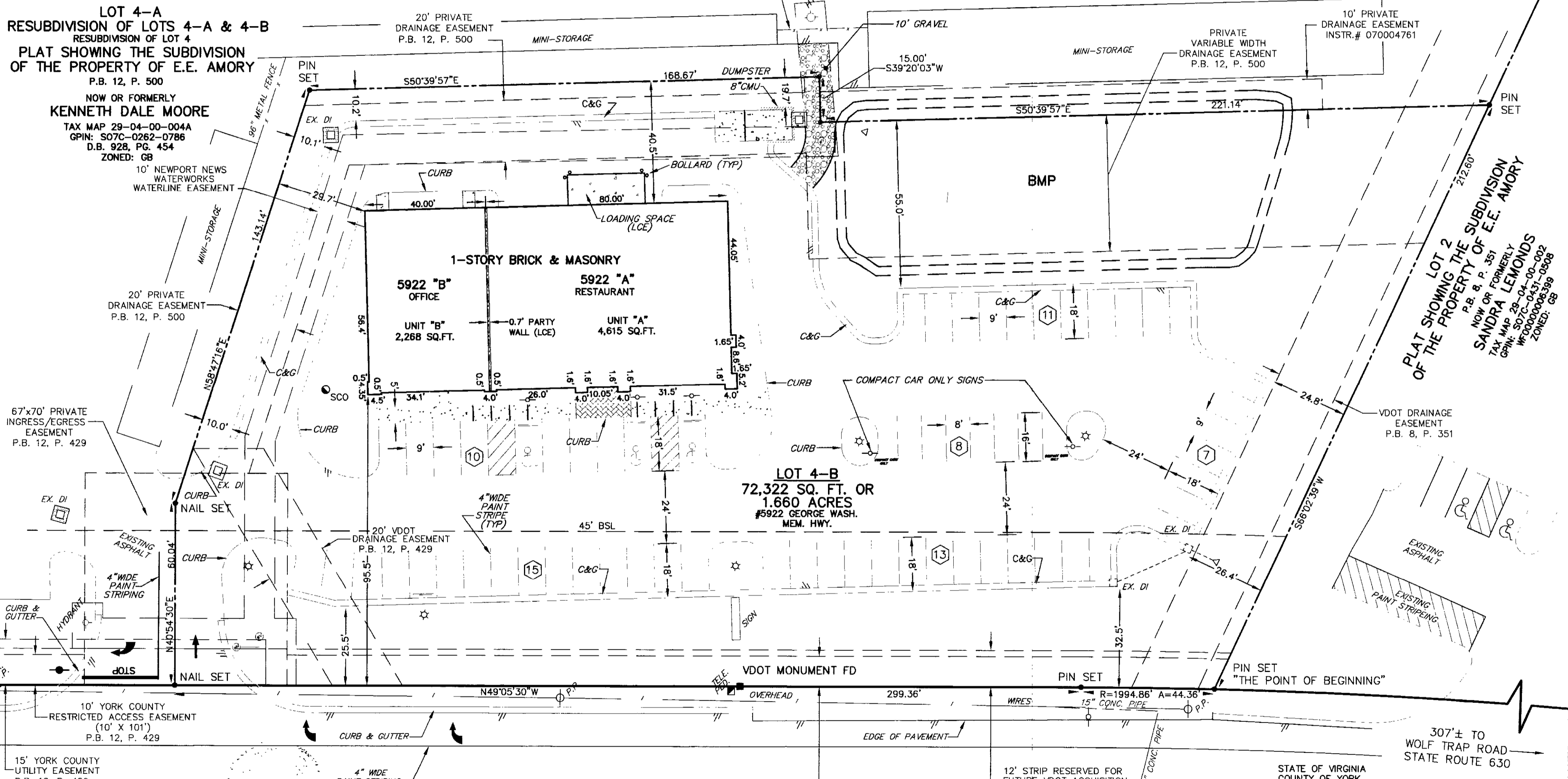


C.E. Newbaker
SURVEYING & PLANNING, INC.
P.O. BOX 1298
YORKTOWN, VA. 23692
PH#: 757-240-2562
FAX: 757-926-4880

SHEET 3 OF 3

LOT 4-A
RESUBDIVISION OF LOTS 4-A & 4-B
RESUBDIVISION OF LOT 4
PLAT SHOWING THE SUBDIVISION
OF THE PROPERTY OF E.E. AMORY
(P.B. 12, P. 500)

NOW OR FORMERLY
KENNETH DALE MOORE
TAX MAP 29-04-00-004A
GPIN: S07C-0262-0786
D.B. 928, PG. 454
ZONED: GB



PLAT SHOWING THE SUBDIVISION
OF THE PROPERTY OF E.E. AMORY
P.B. 8, P. 351
NOW OR FORMERLY
SANDRA LEMMONS
TAX MAP 29-04-00-002
GPIN: S07C-0431-0508
ZONED: GB

U.S. ROUTE 17
GEORGE WASHINGTON MEMORIAL HIGHWAY
120' R/W

THESE BUILDING DIMENSIONS ARE
EXTERIOR BRICK & MASONRY. CURB
READ-OFFS ARE TO THE FACE OF CURB.
PROPERTY IS ASSESSOR'S PARCEL IDENTIFICATION NUMBER:
GPIN#: S07c-0175-0632 TAX MAP: 29-04-00-004B

STATE OF VIRGINIA
COUNTY OF YORK
IN THE CLERK'S OFFICE OF THE CIRCUIT COURT FOR
THE COUNTY OF YORK-POQUOSON, VIRGINIA, THE
21ST DAY OF FEB, 2008, THIS PLAT
WAS PRESENTED AND ADMITTED TO RECORD AS THE
LAW DIRECTS AS INSTRUMENT NUMBER **LCR080003662**

TESTE: **LYNN S. MENDIBUR**
CLERK
BY: *Valerie Lynn Baldwin D.C.*

2008 FEB 27 11:33 AM