

doc # 180009661

State Hwy Plat Book # 10 Pg 221

MATCHLINE STATION 12+25 SHEET NO. 13B

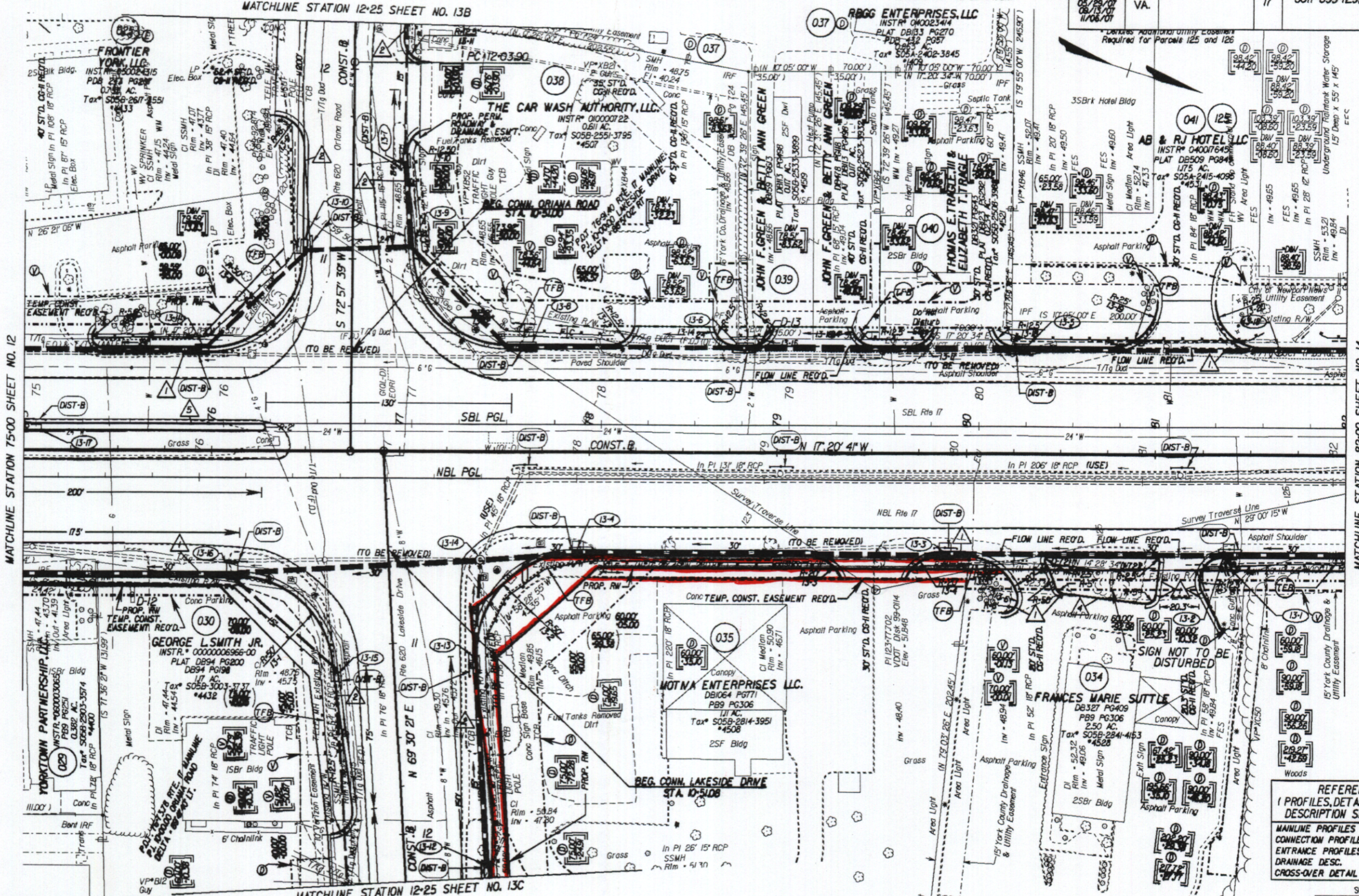
MATCHLINE STATION 12+25 SHEET NO. 13C

SURVEYED BY: B.B. HARMON (151)253-3137
SUPERVISED BY: P.H. BRUM (151) 925-2557
DESIGNED BY: M.D. WINSTEAD (151) 925-2556
HAMPTON ROADS DISTRICT DESIGN UNIT

DESIGN FEATURES RELATING TO CONSTRUCTION OR TO REGULATION AND CONTROL OF TRAFFIC MAY BE SUBJECT TO CHANGE AS DEEMED NECESSARY BY THE DEPARTMENT

REVISED	STATE	FEDERAL AID PROJECT	ROUTE	STATE PROJECT	SHEET NO.
12/08/05 02/05/06 03/23/06 06/08/06 08/17/06 08/17/07	VA.		17	6017-099-129, RW-201, C-501	13

THESE PLANS ARE UNFINISHED AND ARE NOT TO BE USED FOR ANY TYPE OF CONSTRUCTION.



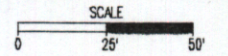
MATCHLINE STATION 75+00 SHEET NO. 12

MATCHLINE STATION 82+00 SHEET NO. 14

REFERENCES
(PROFILES, DETAIL & DRAINAGE DESCRIPTION SHEETS, ETC.)

MAINLINE PROFILES	13A
CONNECTION PROFILES	13D
ENTRANCE PROFILES	24D, E, I, J
DRAINAGE DESC.	2411 - 2477
CROSS-OVER DETAIL	2E

- NOTE: PGL DEMOTES PROFILE GRADE LINE
NOTE: SEE GENERAL NOTES FOR E&S LEGEND
- DENOTES DRAINAGE STRUCTURE NUMBER
 - ① Figures in brackets and dot-dashed lines denote Permanent Easements.
 - ② Denotes variable easement required for Verizon Virginia
 - ③ Denotes variable easement required for Dominion Virginia Power
 - ④ Denotes Construction Limits In Cuts
 - ⑤ Denotes Construction Limits In Fills
 - ① ST'D. CG-7 REQ'D.
 - ② ST'D. CG-6 REQ'D.
 - ③ ST'D. MS-1A REQ'D.
 - ④ ST'D. CG-3 REQ'D.



PLAN NO.	PROJECT	FILE NO.	SHEET NO.
	6017-099-129		13

4(51)50