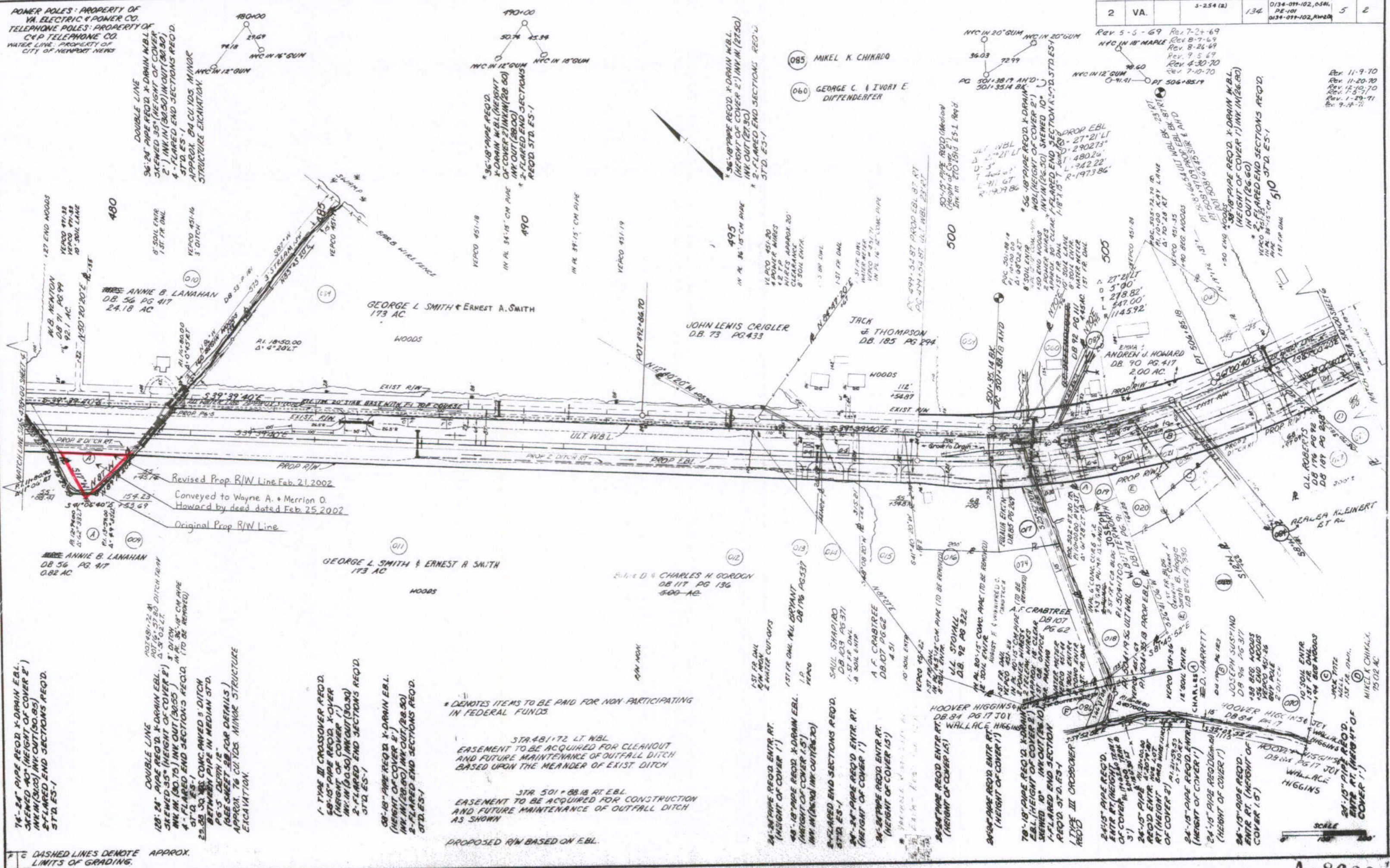


FEDERAL AID	STATE		SHEET NO.	TOTAL SHEETS
	ROUTE	PROJECT		
5-254 (2)	134	0134-011-102, 0581, PE-101, 0134-011-102, AW20	5	2

SUBURBAN DISTRICT DESIGN UNIT



POWER POLES: PROPERTY OF VA. ELECTRIC & POWER CO.
TELEPHONE POLES: PROPERTY OF C&P TELEPHONE CO.
WATER LINE: PROPERTY OF CITY OF NEWPORT NEWS

DOUBLE LINE
 36" 24" PIPE REQ'D X-DRAIN N.B.L. SKEMED 35" (HEIGHT OF COVER 2') IN IN (30.50) IN OUT (30.50) 4-FLARED END SECTIONS REQ'D STD. ES-1 APPROX. 04 CU YDS. MINOR STRUCTURE EXCAVATION.

76"-24" PIPE REQ'D X-DRAIN E.B.L. SKEMED 40" (HEIGHT OF COVER 2') IN IN (30.50) IN OUT (30.50) 4-FLARED END SECTIONS REQ'D STD. ES-1

DOUBLE LINE
 120"-24" PIPE REQ'D X-DRAIN E.B.L. SKEMED 35" (HEIGHT OF COVER 2') IN IN (30.50) IN OUT (30.50) 4-FLARED END SECTIONS REQ'D STD. ES-1 APPROX. 04 CU YDS. MINOR STRUCTURE EXCAVATION.

1"-TYPE III CROSSOVER REQ'D. (HEIGHT OF COVER 2') IN IN (30.50) IN OUT (30.50) 2-FLARED END SECTIONS REQ'D STD. ES-1

36"-18" PIPE REQ'D X-DRAIN E.B.L. (HEIGHT OF COVER 2') IN IN (30.50) IN OUT (30.50) 2-FLARED END SECTIONS REQ'D STD. ES-1

* DENOTES ITEMS TO BE PAID FOR NON-PARTICIPATING IN FEDERAL FUNDS

STR. 481/172 LT. N.B.L. EASEMENT TO BE ACQUIRED FOR CLEANOUT AND FUTURE MAINTENANCE OF OUTFALL DITCH BASED UPON THE MEANDER OF EXIST. DITCH

STR. 501 * 88.18 RT. E.B.L. EASEMENT TO BE ACQUIRED FOR CONSTRUCTION AND FUTURE MAINTENANCE OF OUTFALL DITCH AS SHOWN

PROPOSED R/W BASED ON E.B.L.

DASHED LINES DENOTE APPROX. LIMITS OF GRADING.

