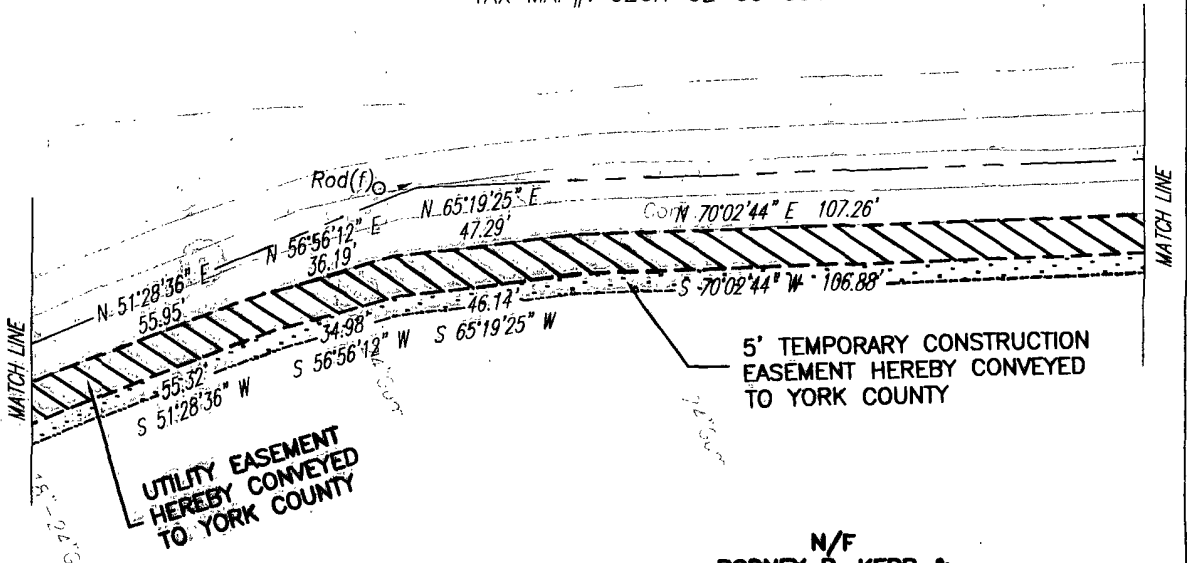


N/F
 VENISSE ANASTASIA GEORGALAS
 D.B. 875, PG. 574
 D.B. 852, PG. 20(SOURCE)
 P.B. 9, PG. 428
 GPIN: V08A-1735-3350
 TAX MAP#: 026H-02-00-004



UTILITY EASEMENT
 HEREBY CONVEYED
 TO YORK COUNTY

5' TEMPORARY CONSTRUCTION
 EASEMENT HEREBY CONVEYED
 TO YORK COUNTY

LINE TABLE

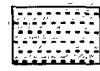
LINE	BEARING	DISTANCE
L1	S 73°11'36" W	12.59'
L2	S 36°12'44" E	14.11'
L3	S 53°47'16" W	20.55'
L4	N 04°19'53" W	1.05'
L5	N 36°12'44" W	14.11'
L6	N 53°47'16" E	8.78'
L7	N 41°52'44" W	12.59'
L8	N 50°17'16" E	20.01'
L9	S 41°52'44" E	11.84'
L10	N 73°11'36" E	12.65'

N/F
 RODNEY B. KERR &
 ELIZABETH C. KERR, TRUSTEE
 INST# 060027197
 P.B. 9, PG. 428
 GPIN: V08A-1795-3180
 TAX MAP#: 026H-02-00-003

YORK COUNTY
 APPROVED FOR RECORDATION
 BY: *J. B. [Signature]*
 RIGHT-OF-WAY AGENT
 DATE: 6-23-2008

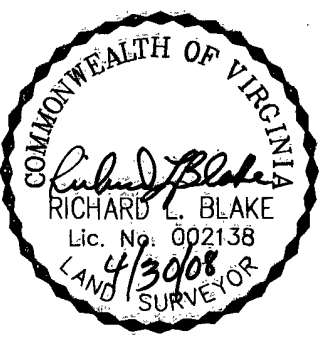


UTILITY EASEMENT HEREBY
 CONVEYED TO YORK COUNTY
 11,848 SQ.FT. OR 0.272 ACRE



TEMPORARY CONSTRUCTION EASEMENT
 HEREBY CONVEYED TO YORK COUNTY
 5,608 SQ.FT. OR 0.129 ACRE

- NOTES:
1. THIS PLAT IS INTENDED FOR A DESCRIPTION OF UTILITY EASEMENT ONLY, AND DOES NOT CONSTITUTE A BOUNDARY SURVEY.
 2. THIS SURVEY WAS PERFORMED WITHOUT THE BENEFIT OF A TITLE REPORT, AND MAY NOT REFLECT ALL EASEMENTS OR RESTRICTIONS THAT MAY AFFECT THE PROPERTY.



REFERENCES:
 INST# 060027197
 P.B. 9, PG. 428

PLAT OF UTILITY EASEMENT ACQUISITION
 FROM: RODNEY B. KERR &
 ELIZABETH C. KERR, TRUSTEE
 TO: COUNTY OF YORK, VIRGINIA
 PROJECT: YORK POINT SEWER PROJECT

SHEET 2 OF 4

DATE: 4/30/08

SCALE: 1" = 40'

MERIDIAN IS BASED
 ON:
 VIRGINIA STATE PLANE
 COORDINATE SYSTEM,
 SOUTH ZONE, NAD 83
 U.S. SURVEY FEET

PRECISION MEASUREMENTS, INC.
 SURVEYORS • GPS • 3-D SCANNING • MAPPERS
 813 DILIGENCE DRIVE, SUITE 119
 NEWPORT NEWS, VIRGINIA 23606
 (757) 595-7570