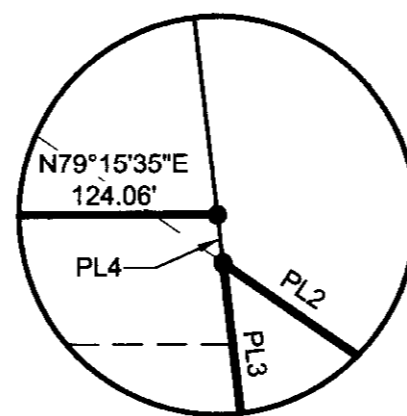


DETAIL A
N.T.S.



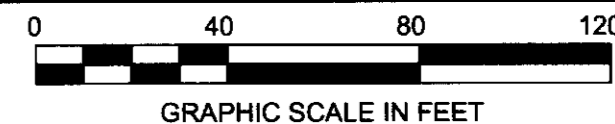
DETAIL B
N.T.S.

PLAT SHOWING RESUBDIVISION
OF
PARCEL 1 & PARCEL 2,
STANDING IN THE NAME OF
BUFFA PROPERTIES, LLC
GRAFTON MAGISTERIAL DISTRICT
YORK COUNTY, VIRGINIA



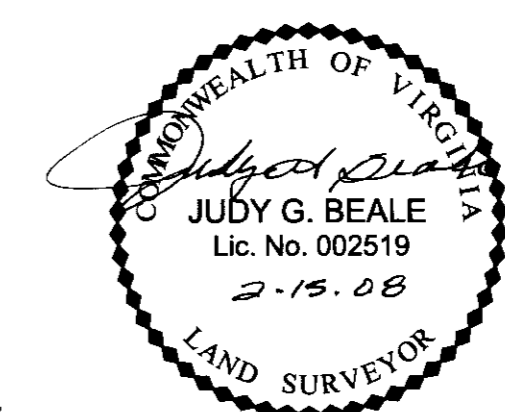
WOOLPERT, INC.
415 PORT CENTRE PARKWAY
SUITE 101
PORTSMOUTH, VIRGINIA 23704
TEL: 757-399-6882 FAX: 757-399-6869

DES. N/A JOB NO. 066096.06
DRN. RDA SCALE 1"=40'
CKD. JGB DATE 02/15/2008
SHEET NO. 2 OF 2
FILE NO. 66096 PLAT 2007.Dwg



CURVE TABLE					
CURVE	RADIUS	LENGTH	DELTA	CHORD	CHD BEARING
C1	205.50'	39.87'	11°06'59"	39.81'	S 73°41'34" W
C2	205.50'	36.33'	10°07'41"	36.28'	S 74°11'13" W
C3	205.50'	3.54'	00°59'17"	3.54'	S 68°37'43" W
C4	223.04'	31.07'	07°58'55"	31.05'	S 71°50'09" W
C5	200.00'	38.80'	11°06'58"	38.74'	S 73°41'34" W
C6	25.00'	10.34'	23°41'54"	10.27'	N 88°54'00" W
C7	10.00'	13.72'	78°36'50"	12.67'	N 56°38'59" W
C8	15.00'	23.56'	90°00'00"	21.21'	S 50°57'24" E
C9	5.00'	8.25'	94°31'21"	7.34'	S 64°36'14" E
C10	5.50'	8.11'	84°28'44"	7.39'	N 25°53'43" E
C11	3.50'	9.18'	150°16'54"	6.77'	S 34°24'12" E
C12	230.00'	35.31'	08°47'42"	35.27'	N 74°51'12" E
C13	20.00'	9.60'	27°30'06"	9.51'	N 65°29'59" E

LINE TABLE		
LINE	BEARING	LENGTH
PL1	S 14°28'49" E	5.35'
PL2	N 66°17'54" W	6.91'
PL3	S 17°20'41" E	58.26'
PL4	S 17°20'41" E	1.12'
EL5	N 81°03'47" E	9.21'
EL6	S 20°52'38" E	12.00'
EL7	N 05°57'24" W	25.50'
EL8	S 05°57'24" W	28.40'
EL9	S 84°02'36" W	15.00'
EL10	N 16°20'39" W	6.44'
EL11	S 17°20'41" E	34.60'
EL12	S 17°20'41" E	23.55'



APPROVED

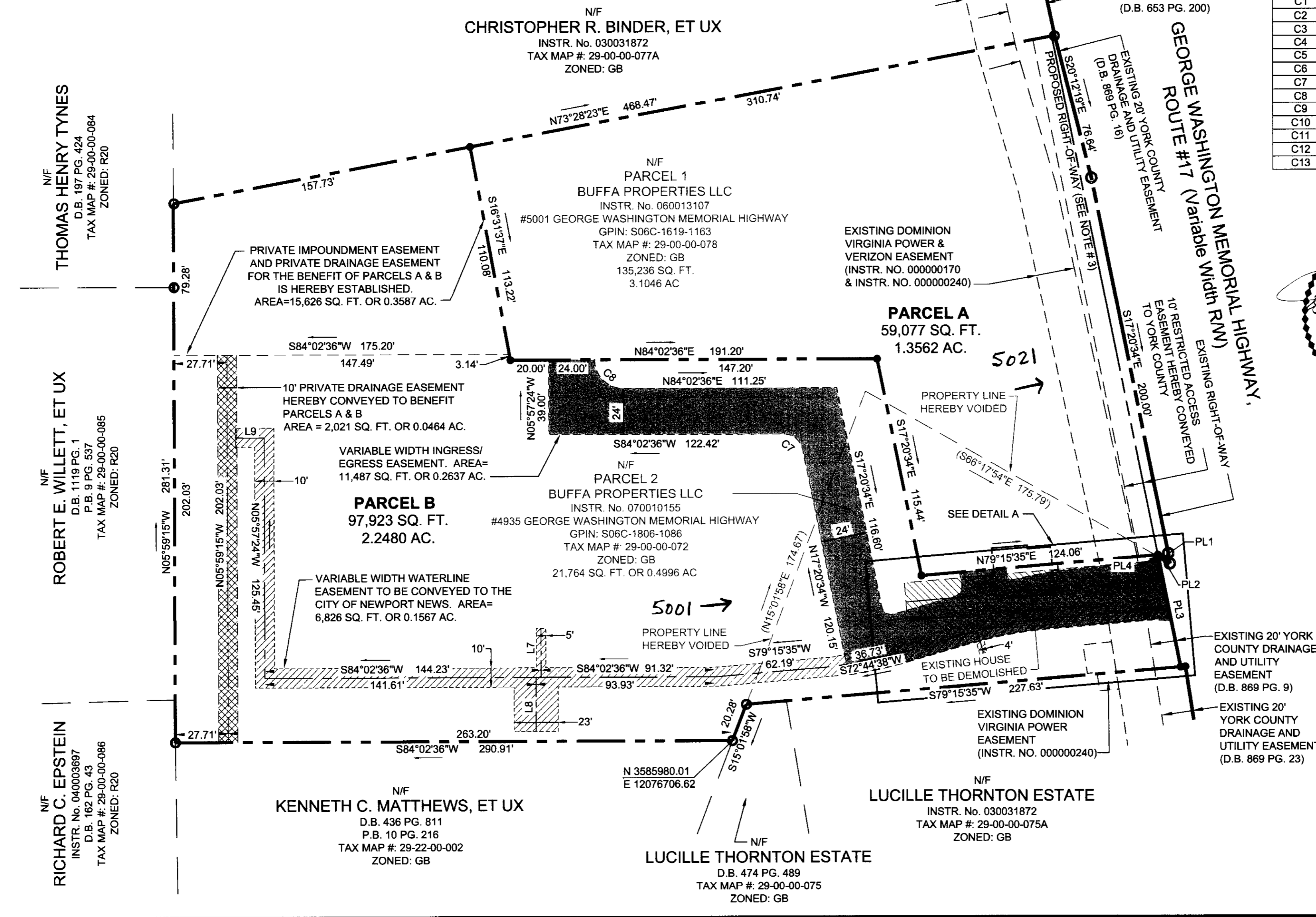
YORK COUNTY BOARD OF SUPERVISORS:

BY: *Al. Maddalena*
PLAT APPROVING AGENT

DATE: 7/25/08

STATE OF VIRGINIA
COUNTY OF YORK:
IN THE CLERK'S OFFICE OF THE CIRCUIT COURT OF THE
COUNTY OF YORK-POQUOSON, VIRGINIA, ON THE 28th DAY OF
July, 2008 AT 12:57 PM THIS PLAT WAS PRESENTED
AND ADMITTED TO RECORD AS THE LAW DIRECTS, AS INSTRUMENT
NUMBER 680017414

TESTE: *Lynn S. Mendicino* CLERK
BY: *Quint B. Spivey*



2008 JUL 28 PM 12:52