

EXHIBIT "C"
 PLAT OF
**YORKTOWN COMMERCE CENTER
 A CONDOMINIUM**
 PHASE 1
 YORKTOWN, VIRGINIA
 NELSON MAGISTERIAL DISTRICT

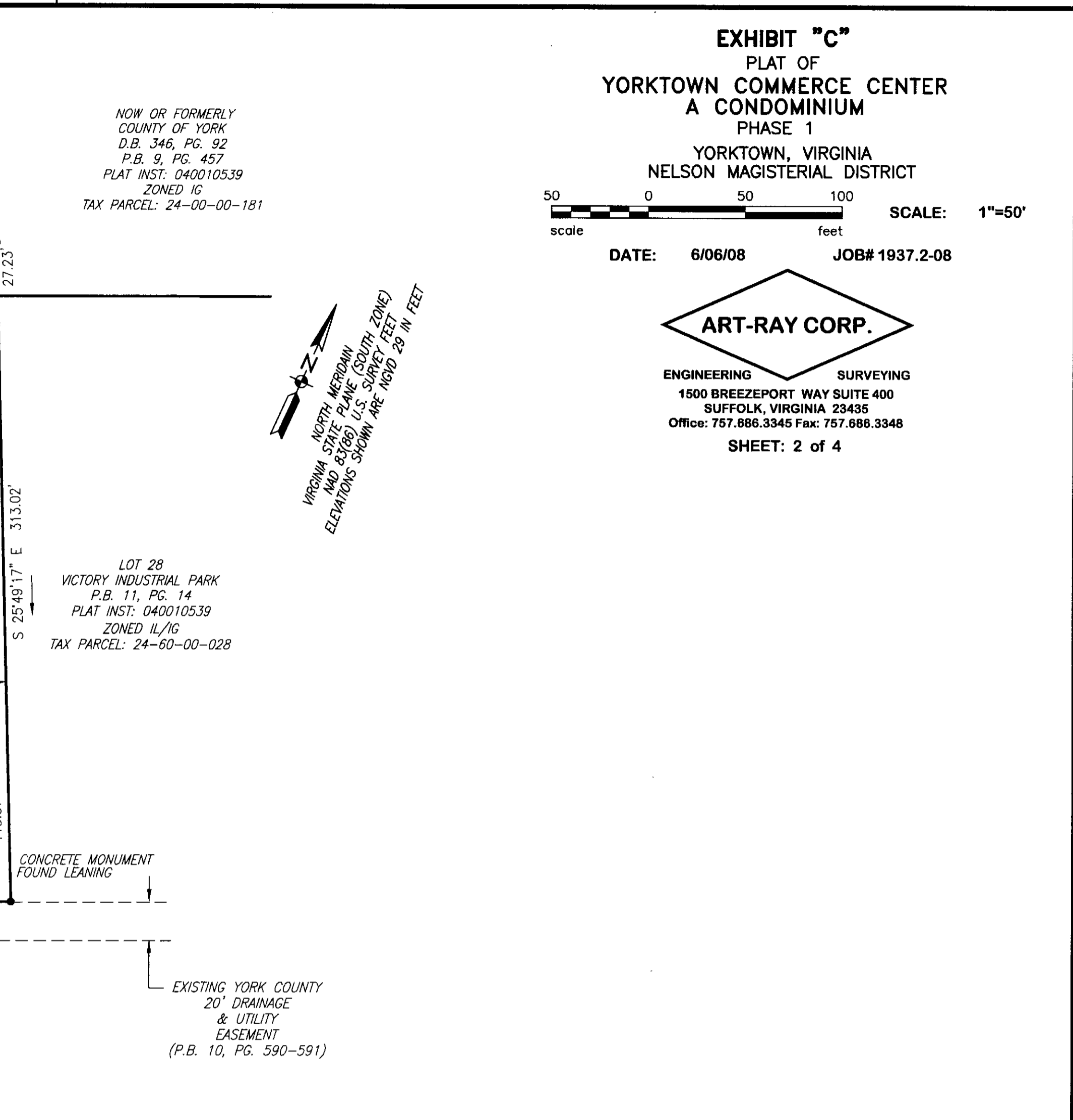
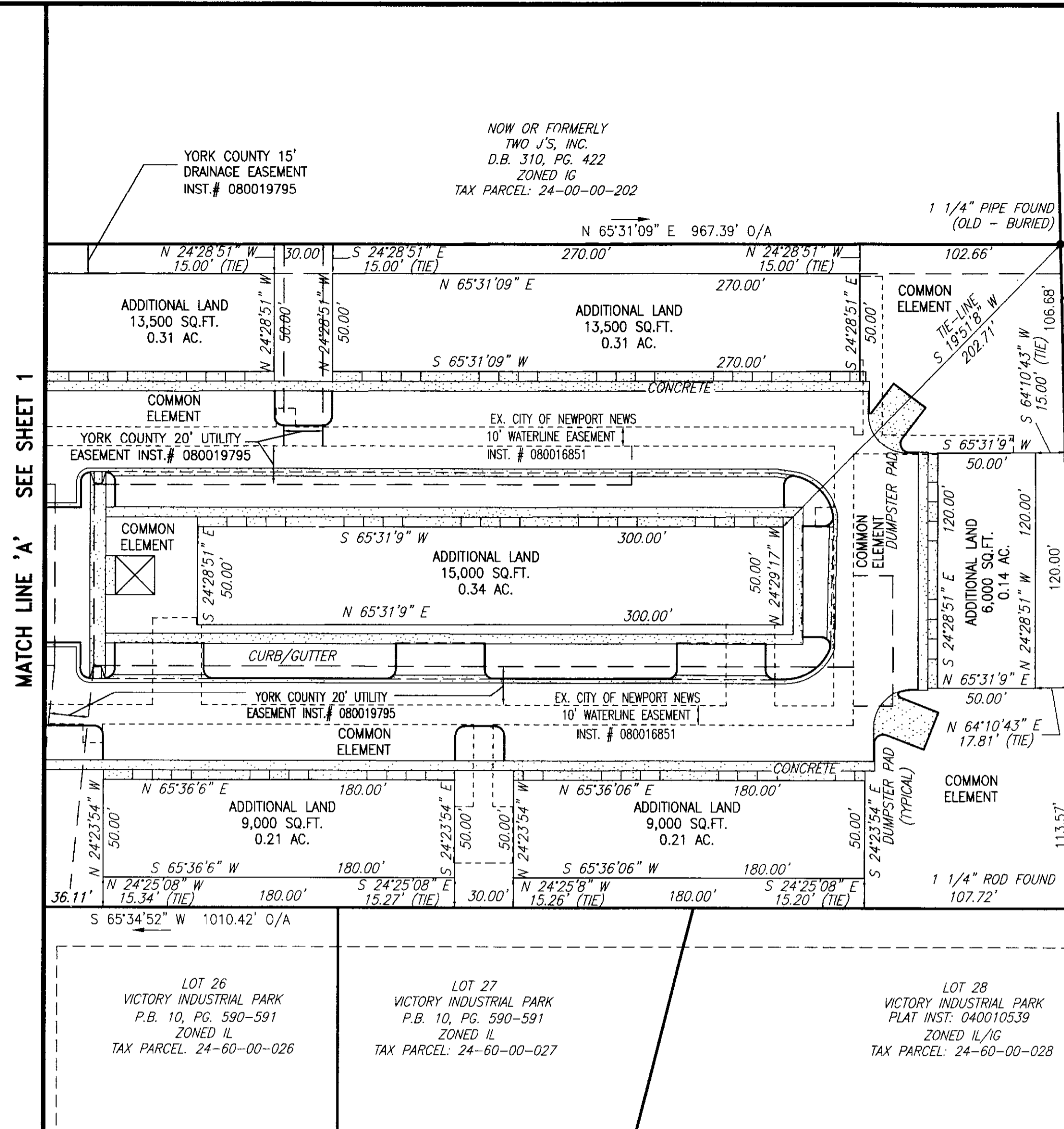
50 0 50 100
 scale feet
SCALE: 1"=50'

DATE: 6/06/08 JOB# 1937.2-08



ENGINEERING SURVEYING
 1500 BREEZEPORT WAY SUITE 400
 SUFFOLK, VIRGINIA 23435
 Office: 757.886.3345 Fax: 757.686.3348
SHEET: 2 of 4

NORTH MERIDIAN
 VIRGINIA STATE PLANE (SOUTH ZONE)
 MAD 83(68) U.S. SURVEY FEET
 ELEVATIONS SHOWN ARE NGVD 29 IN FEET



MATCH LINE 'A' SEE SHEET 1

I CERTIFY THAT THIS PLAT IS ACCURATE AND COMPLIES WITH THE PROVISIONS OF SECTION 55-79.58(o) OF THE CODE OF VIRGINIA OF 1950 AS AMENDED AND ALL UNITS SHOWN HEREON HAVE BEEN SUBSTANTIALLY COMPLETED.



LEGEND

- PIN FOUND (UNLESS NOTED OTHERWISE)
- DENOTES MONUMENT FOUND
- - - - - EXISTING DRAINAGE EASEMENT
- - - - - EXISTING NEWPORT NEWS UTILITY EASEMENT (INST# 080016851)
- ▒ CONCRETE SIDEWALK

APPROVED:
 YORK COUNTY BOARD OF SUPERVISORS

BY: *Al Maddalena*
 PLAT APPROVING AGENT

DATE: 9/4/08

STATE OF VIRGINIA
 COUNTY OF YORK
 IN THE CLERK'S OFFICE OF THE CIRCUIT COURT FOR THE
 COUNTY OF YORK-POQUOSON THIS 10th DAY OF Sept. 2008,
 THIS PLAT WAS PRESENTED AND ADMITTED TO RECORD AS
 THE LAW DIRECTS AS INSTRUMENT NO. 080021218

TESTE: Lynn S. Mendibar
 CLERK
 BY: *Valerie D. Ballard D.C.*

2008 SEP 10 AM 10:21