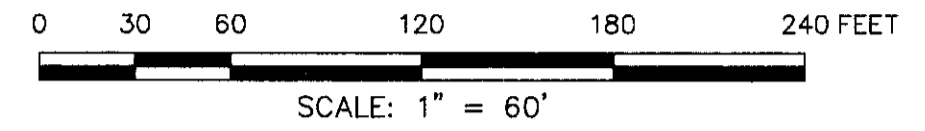


**PLAT OF UTILITY EASEMENT CONVEYANCE
 FROM VILLAS AT YORKTOWN, LLC
 TO COUNTY OF YORK, VIRGINIA**
 NELSON DISTRICT - COUNTY OF YORK, VIRGINIA
 MAY 23, 2008

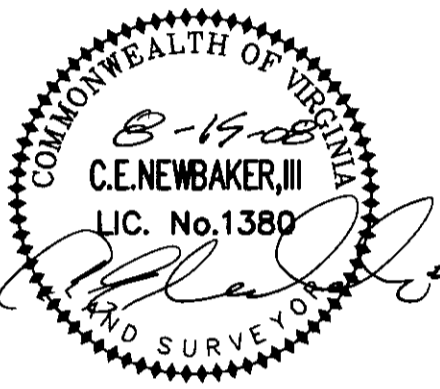
C. E. Newbaker
 SURVEYING & PLANNING, INC.
 P.O. BOX 1298
 YORKTOWN, VA. 23692
 PH#: 757-240-2562
 CELL: 757-926-4880



SURVEYOR'S CERTIFICATE

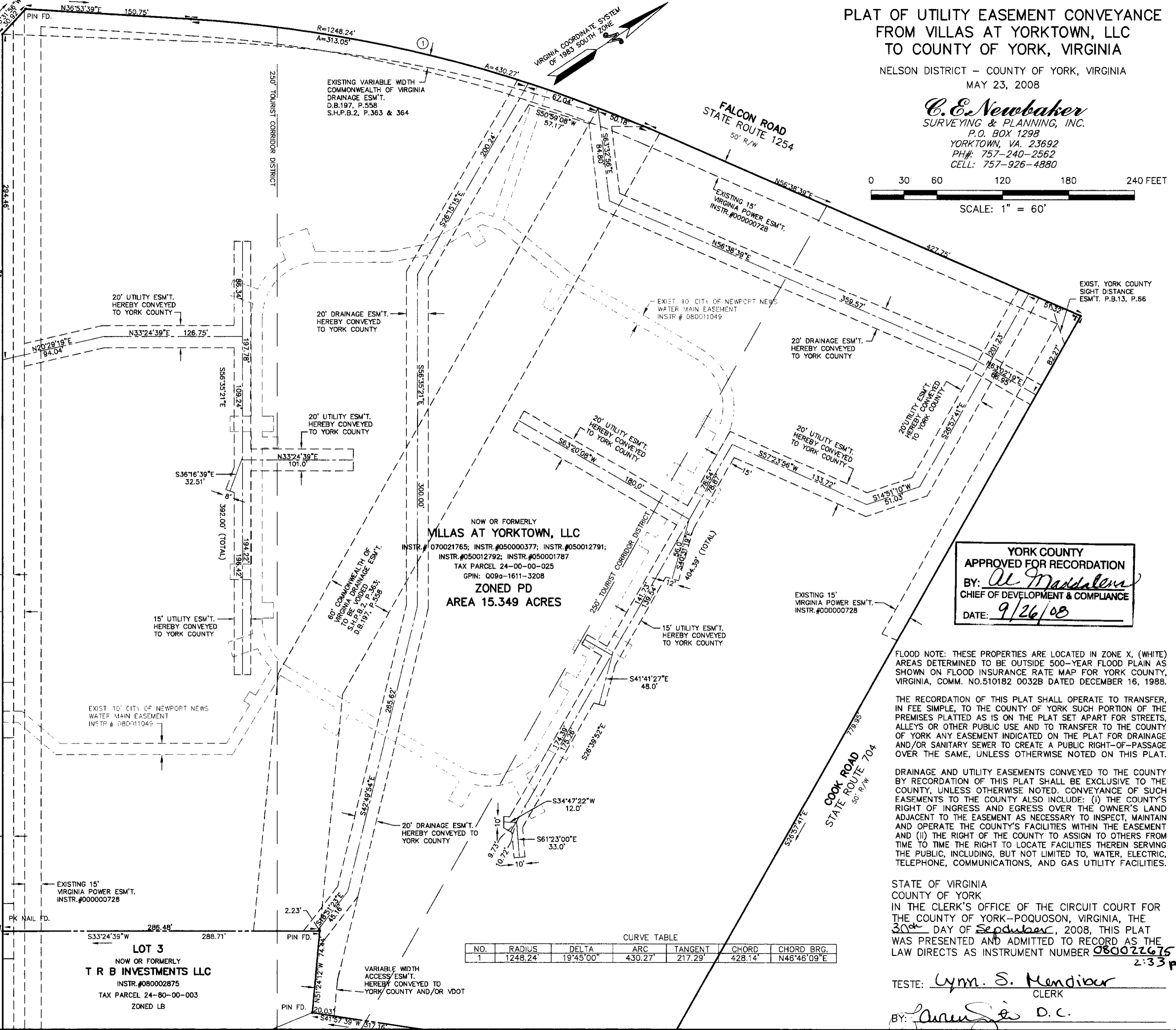
I HEREBY CERTIFY THAT THIS SURVEY, TO THE BEST OF MY KNOWLEDGE AND BELIEF, IS CORRECT AND COMPLIES WITH THE MINIMUM PROCEDURES AND STANDARDS ESTABLISHED BY THE VIRGINIA BOARD OF ARCHITECTS, PROFESSIONAL ENGINEERS, LAND SURVEYORS, AND CERTIFIED LANDSCAPE ARCHITECTS.

SIGNED: *Charles E. Newbaker, III* DATE: 8-15-08
 CHARLES E. NEWBAKER, III L.S.1380



GEORGE WASHINGTON MEMORIAL HIGHWAY
 U.S. ROUTE 17
 VARIABLE WIDTH R/W

EXIST. 10' YORK COUNTY RESTRICTED ACCESS ESM'T. P.B.13, P.65-66
 EXIST. 20' YORK COUNTY UTILITY ESM'T. P.B.13, P.65-66
 EXIST. 50' SHARED ENTRANCE ACCESS ESM'T. P.B.13, P.65-66
 EXISTING 10' BELL ATLANTIC-VIRGINIA, INC. ESM'T. INSTR.#000003826
 EXIST. 50' SHARED ENTRANCE ACCESS ESM'T. P.B.13, P.65-66



**YORK COUNTY
 APPROVED FOR RECORDATION**
 BY: *Al Maddalena*
 CHIEF OF DEVELOPMENT & COMPLIANCE
 DATE: 9/26/08

FLOOD NOTE: THESE PROPERTIES ARE LOCATED IN ZONE X. (WHITE) AREAS DETERMINED TO BE OUTSIDE 500-YEAR FLOOD PLAIN AS SHOWN ON FLOOD INSURANCE RATE MAP FOR YORK COUNTY, VIRGINIA, COMM. NO.510182 0032B DATED DECEMBER 16, 1988.

THE RECORDATION OF THIS PLAT SHALL OPERATE TO TRANSFER, IN FEE SIMPLE, TO THE COUNTY OF YORK SUCH PORTION OF THE PREMISES PLATTED AS IS ON THE PLAT SET APART FOR STREETS, ALLEYS OR OTHER PUBLIC USE AND TO TRANSFER TO THE COUNTY OF YORK ANY EASEMENT INDICATED ON THE PLAT FOR DRAINAGE AND/OR SANITARY SEWER TO CREATE A PUBLIC RIGHT-OF-PASSAGE OVER THE SAME, UNLESS OTHERWISE NOTED ON THIS PLAT.

DRAINAGE AND UTILITY EASEMENTS CONVEYED TO THE COUNTY BY RECORDATION OF THIS PLAT SHALL BE EXCLUSIVE TO THE COUNTY, UNLESS OTHERWISE NOTED. CONVEYANCE OF SUCH EASEMENTS TO THE COUNTY ALSO INCLUDE: (i) THE COUNTY'S RIGHT OF INGRESS AND EGRESS OVER THE OWNER'S LAND ADJACENT TO THE EASEMENT AS NECESSARY TO INSPECT, MAINTAIN AND OPERATE THE COUNTY'S FACILITIES WITHIN THE EASEMENT AND (ii) THE RIGHT OF THE COUNTY TO ASSIGN TO OTHERS FROM TIME TO TIME THE RIGHT TO LOCATE FACILITIES THEREIN SERVING THE PUBLIC, INCLUDING, BUT NOT LIMITED TO, WATER, ELECTRIC, TELEPHONE, COMMUNICATIONS, AND GAS UTILITY FACILITIES.

STATE OF VIRGINIA
 COUNTY OF YORK
 IN THE CLERK'S OFFICE OF THE CIRCUIT COURT FOR THE COUNTY OF YORK-POQUOSON, VIRGINIA, THE 30th DAY OF September, 2008, THIS PLAT WAS PRESENTED AND ADMITTED TO RECORD AS THE LAW DIRECTS AS INSTRUMENT NUMBER 080022675

TESTE: *Lynn S. Mendibac*
 CLERK
 BY: *Charles E. Newbaker, III*