

Design File - c:\documents\ms_jacob\60843\60843.dgn Ref. File - c:\documents\ms_jacob\60843.dgn Ref. File - c:\documents\ms_jacob\60843.dgn Ref. File - c:\documents\ms_jacob\60843.dgn Ref. File - c:\documents\ms_jacob\60843.dgn Ref. File - c:\documents\ms_jacob\60843.dgn Ref. File - c:\documents\ms_jacob\60843.dgn Ref. File - c:\documents\ms_jacob\60843.dgn

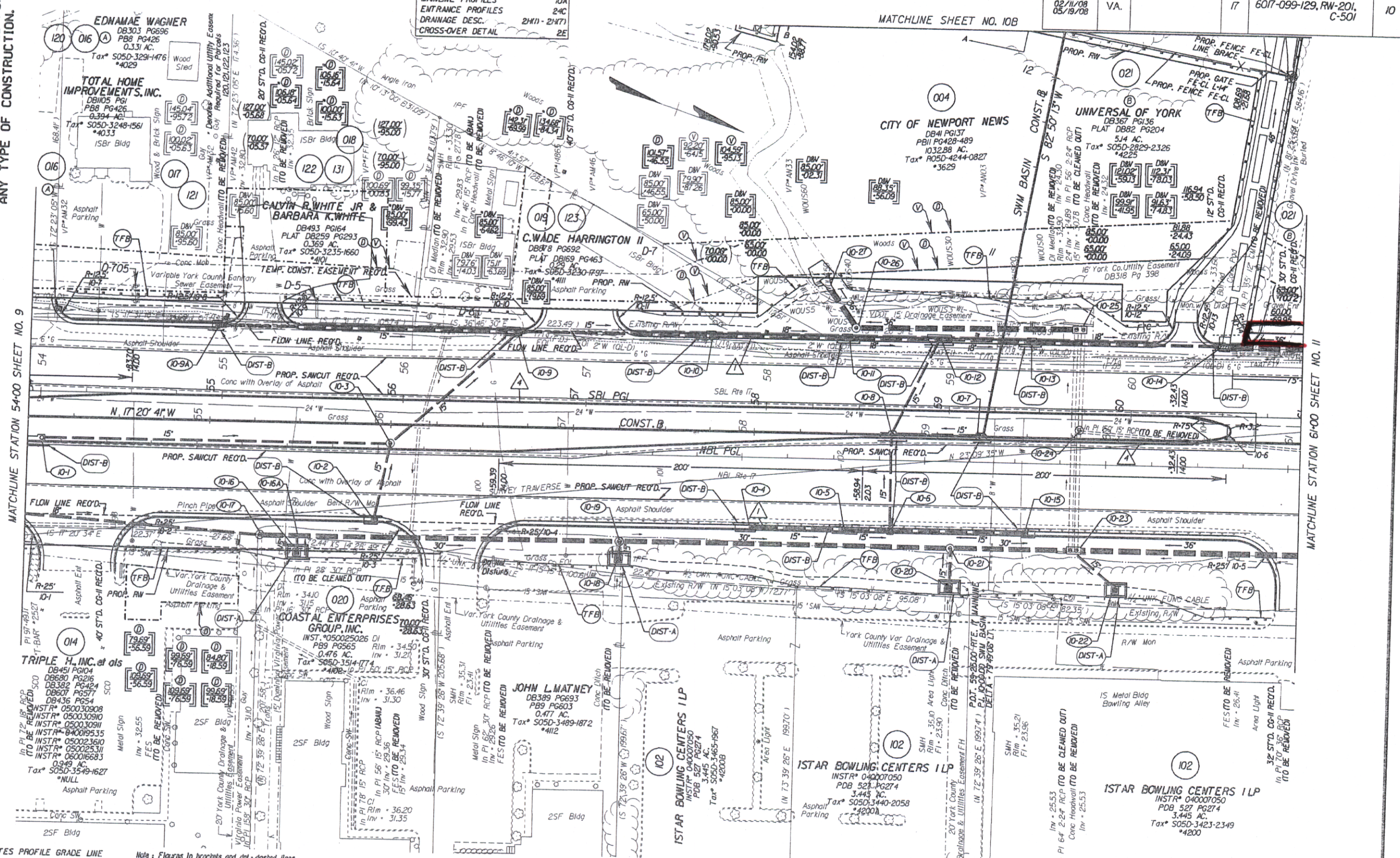
SURVEYED BY: ... SUPERVISED BY: ... DESIGNED BY: ... HAMPTON ROADS DISTRICT DESIGN UNIT

THESE PLANS ARE UNFINISHED AND ARE NOT TO BE USED FOR ANY TYPE OF CONSTRUCTION.

REFERENCES (PROFILES, DETAIL & DRAINAGE DESCRIPTION SHEETS, ETC.) MAINLINE PROFILES 10A ENTRANCE PROFILES 24C DRAINAGE DESC. 24H1 - 24H7 CROSS-OVER DETAIL 2E

DESIGN FEATURES RELATING TO CONSTRUCTION OR TO REGULATION AND CONTROL OF TRAFFIC MAY BE SUBJECT TO CHANGE AS DEEMED NECESSARY BY THE DEPARTMENT

Table with columns: REVISION, STATE, FEDERAL AID, PROJECT, ROUTE, PROJECT, SHEET NO. Includes dates like 12/09/05 and project number 6017-099-129, RW-201, C-501.



NOTE: PGL DENOTES PROFILE GRADE LINE. NOTE: SEE GENERAL NOTES FOR E&S LEGEND. DENOTES DRAINAGE STRUCTURE NUMBER. Denotes variable assessment required for Varizen Virginia. Denotes variable assessment required for Dominion Virginia Power. Denotes Construction Limits In Cuts. Denotes Construction Limits In Fills. ST'D. CG-7 REO'D. ST'D. MS-2 REO'D.

29-98

Table with columns: PLAN NO., PROJECT, FILE NO., SHEET NO. Values: PLAN NO. 6017-099-129, PROJECT 6017-099-129, FILE NO. 10, SHEET NO. 10.

DOC # 080022941

State Hwy Plat Book # 10 p. 289