



LINE TABLE		
LINE	LENGTH	BEARING
L1	69.17'	N28°41'31"E
L2	33.34'	N32°26'46"E
L3	62.94'	N24°43'29"E
L4	159.42'	S13°42'45"W
L5	132.00'	S01°15'16"E
L6	132.00'	N01°15'16"W
L7	165.23'	N13°42'45"E

SUBDIVISION PLAT
OF
SUMMER'S CROSSING

NELSON DISTRICT - YORK COUNTY, VIRGINIA

OCTOBER 23, 2006

SHEET 2 OF 2

SCALE: 1" = 60'



Simmons Newsome, P.C.

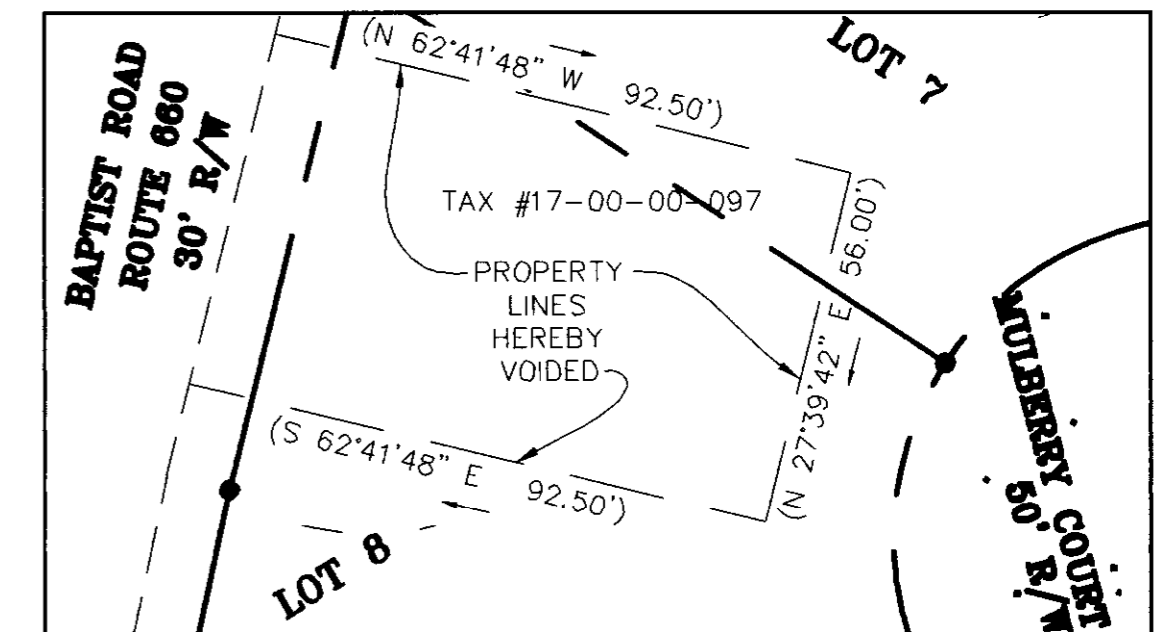
Surveyors - Planners
110A Dare Road
Yorktown, Virginia 23692
Phone (757) 898-4914 Fax (757) 898-7184

LEGEND

- Iron Pipe/Rod Set (IPS) (IRS)
- Concrete Monument Set
- Iron Pipe/Rod Found (IPF) (IRF)
- Concrete Monument Found

RMA Resource Management Area

**INSET
DETAIL OF VOIDED PROPERTY LINES
OF TAX #17-00-00-097
1" = 30'**



APPROVED:
YORK COUNTY BOARD OF SUPERVISORS

BY: Al Maddalena
Plat Approving Agent

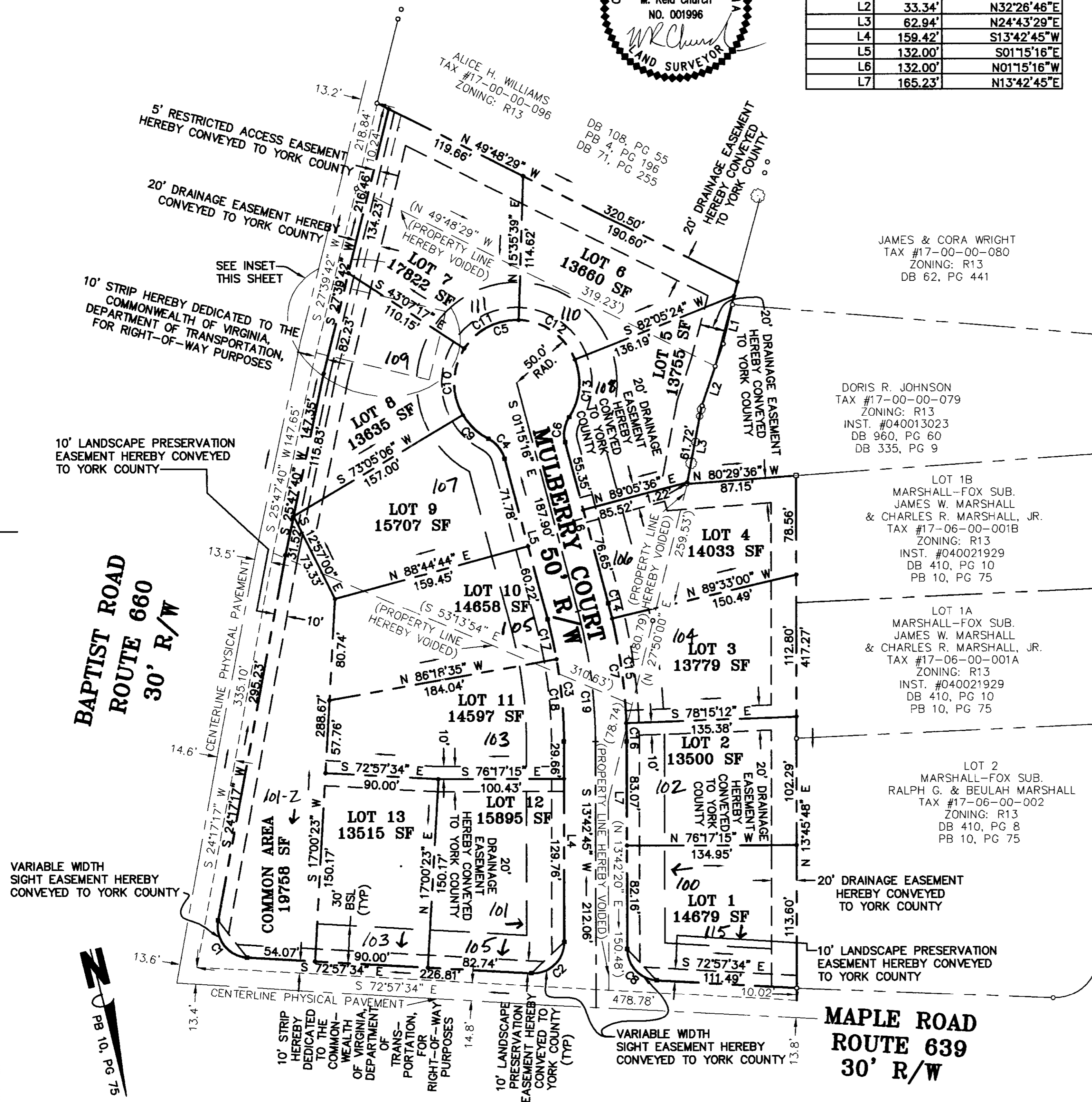
DATE: 10/3/08

STATE OF VIRGINIA
COUNTY OF YORK

In the Clerk's Office of the Circuit Court for the County of York-Poquoson, the 14th day of October, 2008 this map was presented and admitted to record as the law directs in Instrument # 080023588 1:39pm

TESTE: Lynn S. Mendibur

BY: Jose y Bruden, D.C. 05-08-2936
REC PLAT 2006.DWG



2008 OCT 14 PM 1:39