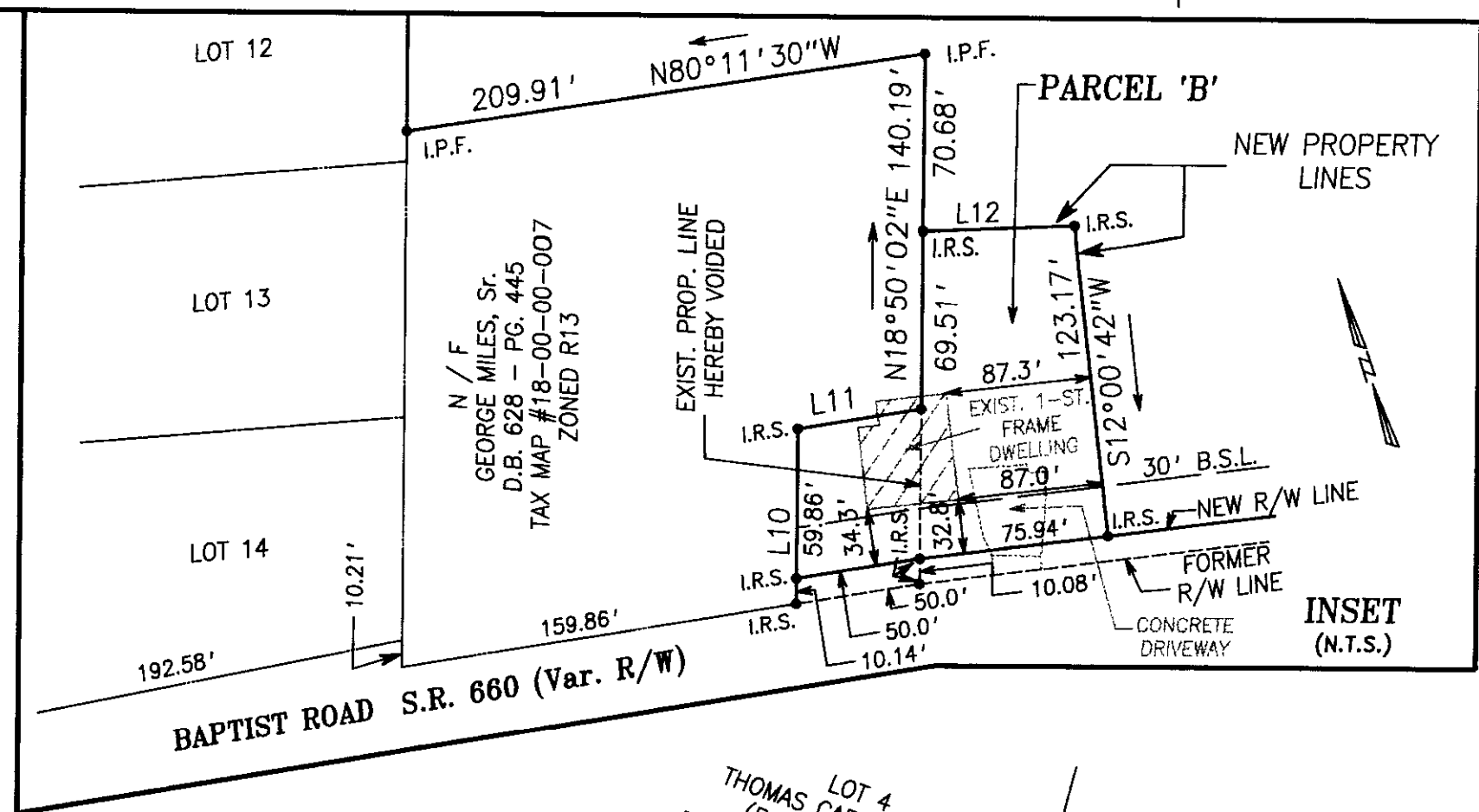


LINE SCHEDULE		
No.	BEARING	DIST.
L1	S87°06'31"W	21.97'
L2	S70°37'41"W	50.77'
L3	S88°58'29"W	36.00'
L4	S88°58'29"W	90.02'
L5	N83°43'52"W	97.34'
L6	N76°43'13"W	102.68'
L7	N67°39'52"W	46.77'
L8	N78°31'19"W	77.14'
L9	N80°50'16"W	50.00'
L10	N18°50'02"E	70.00'
L11	S80°50'16"E	50.00'
L12	S73°36'36"E	60.74'
L13	S61°41'00"E	59.64'
L14	S70°39'01"E	118.41'
L15	(S18°50'02"W)	(70.00')
L16	S80°50'16"E	50.00'
L17	S78°31'19"E	75.94'
L18	S67°43'30"E	47.77'
L19	S22°20'08"W	10.00'



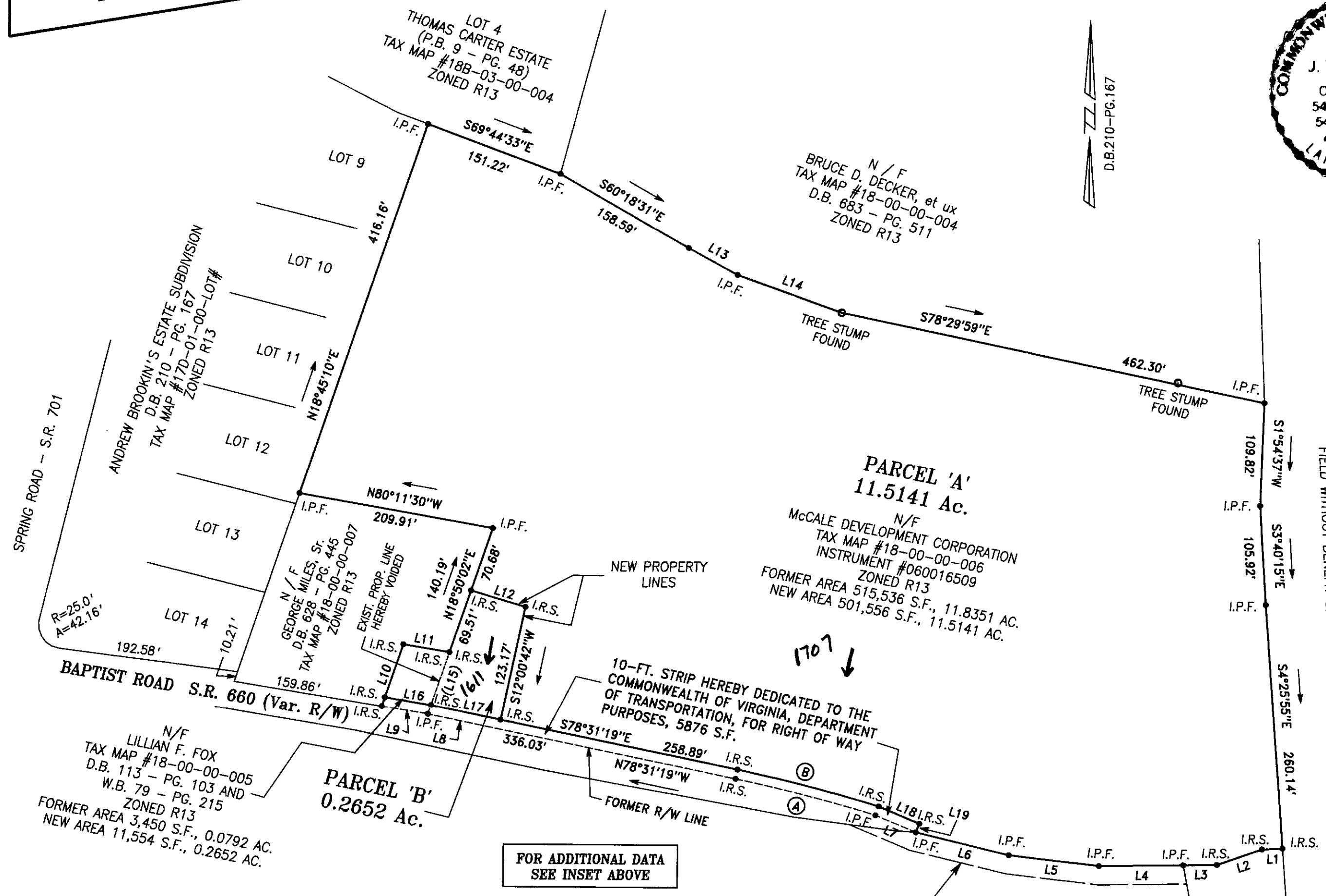
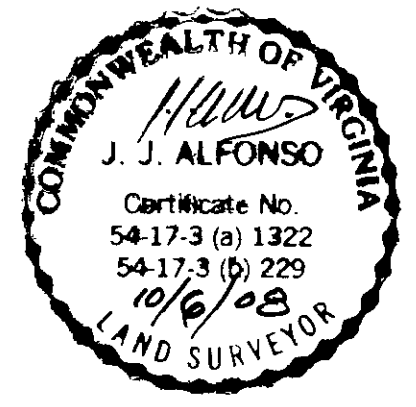
BOUNDARY LINE ADJUSTMENT BETWEEN THE PROPERTIES OF McCALÉ DEVELOPMENT CORPORATION AND LILLIAN F. FOX

NELSON DISTRICT
COUNTY OF YORK, VIRGINIA

ALFONSO & ASSOCIATES, INC.
Surveying & Land Development Planning

729 THIMBLE SHOALS BLVD. SUITE 2A
NEWPORT NEWS VIRGINIA 23606
DATE: SEPT. 16, 2008 SCALE 1" = 100'

SHEET 2 OF 2



APPROVED
YORK COUNTY BOARD OF SUPERVISORS
BY: *Al Maddalena*
PLAT APPROVING AGENT
DATE: 10/15/08

NOTE: BOUNDARY LINE IN COMMON WITH COLONIAL NATIONAL HISTORICAL PARK BASED ON MONUMENTATION FOUND IN THE FIELD WITHOUT BENEFIT OF PLATS OR DEEDS OF RECORD.

STATE OF VIRGINIA
COUNTY OF YORK
IN THE CLERK'S OFFICE OF THE CIRCUIT COURT FOR THE COUNTY OF YORK-POQUOSON, VIRGINIA, THIS MAP WAS PRESENTED AND ADMITTED TO RECORD AS THE LAW DIRECTS THIS 16th DAY OF OCT, 2008.

INSTRUMENT # 080023788 1:25PM

TESTE *Lynn S. Mendibur* CLERK
BY: *[Signature]*

CURVE DATA TABLE						
No.	RADIUS	DELTA	TANGENT	ARC	CHORD	CHD. BEARING
A	1,769.34'	5°00'27"	77.37'	154.64'	154.59'	N 75°55'07" W
B	1,779.34'	5°00'27"	77.80'	155.51'	155.46'	S 75°55'07" E

FOR ADDITIONAL DATA SEE INSET ABOVE

