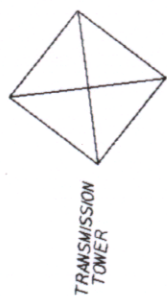
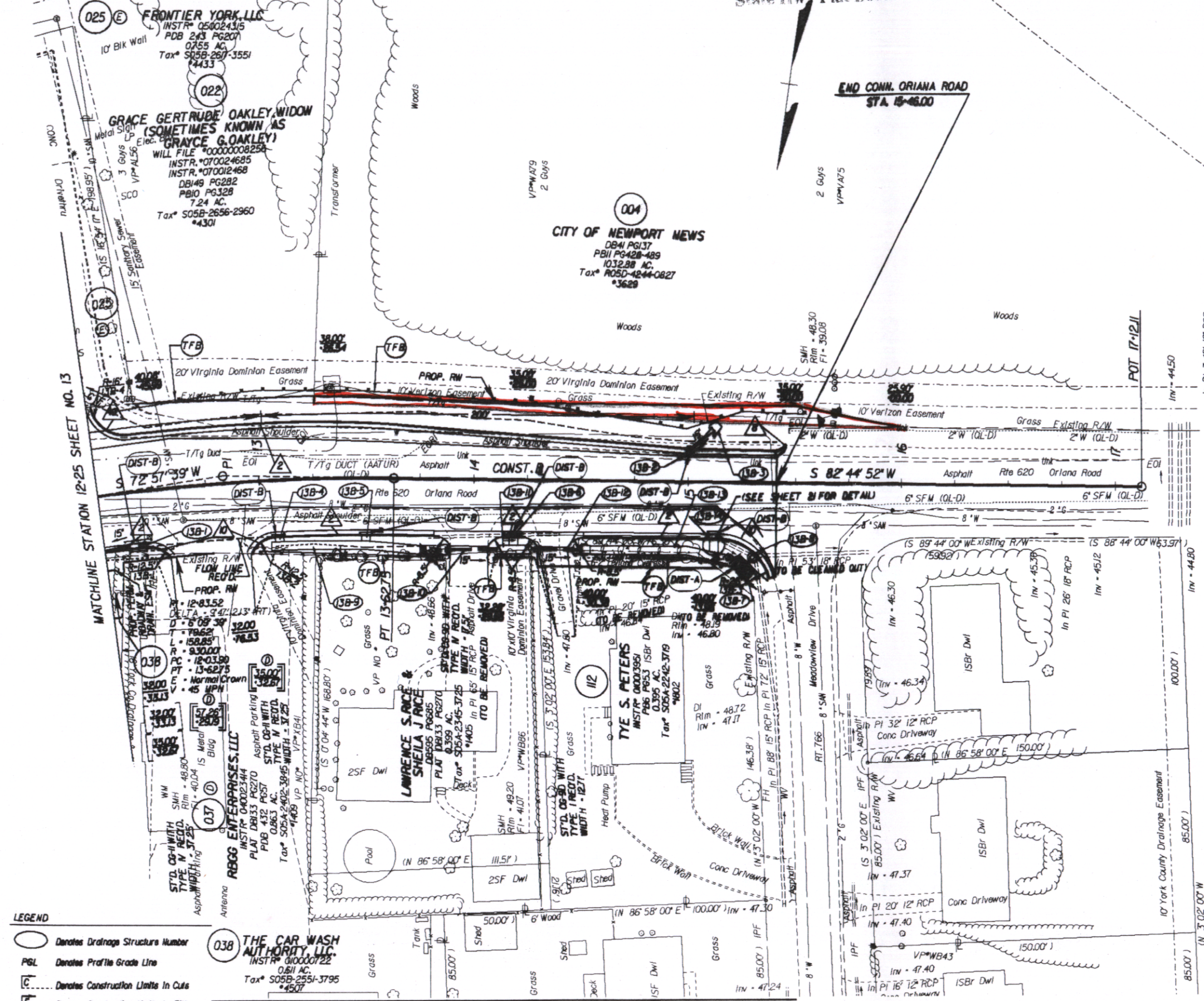


Instr # 08-26129

DESIGN FEATURES RELATING TO CONSTRUCTION OR TO REGULATION AND CONTROL OF TRAFFIC MAY BE SUBJECT TO CHANGE AS DEEMED NECESSARY BY THE DEPARTMENT

REVISED	STATE	FEDERAL AID	ROUTE	STATE PROJECT	SHEET NO.
02/15/07 08/13/07	VA.		17	6017-099-129, RW-201, C-501	13B

UTILITY OWNERS: SEE SHEET 3 FOR DETAILS.



- LEGEND**
- Denotes Drainage Structure Number
 - PGL Denotes Profile Grade Line
 - Denotes Construction Limits In Cuts
 - - - Denotes Construction Limits In Fills
 - Ⓧ Denotes variable easement required for Dominion Virginia Power

038 THE CAR WASH AUTHORITY, LLC
 INSTR# 04002344
 PLAT DB133 PG270
 PDB 432 PG57
 0.863 AC.
 Tax# S05B-2551-3795
 *4507

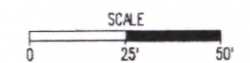
- 00' 00' Figures without parenthesis or brackets and solid lines denote Proposed Right of Way.
- 00' 00' Figures in brackets and dot-dashed lines denote Permanent Easements.
- 00' 00' Figures in double brackets and dot-dashed lines denote Permanent Utility Easements.
- △ ST'D. CO-G REQ'D.
- △ RAD. CO-G REQ'D.

NOTES
 See General Notes For E&S Legend

REFERENCES
 (PROFILES, DETAIL & DRAINAGE DESCRIPTION SHEETS, ETC.)

CONNECTION PROFILES	13D
ENTRANCE PROFILES	24J
DRAINAGE DESC.	24K1 - 24K7

THESE PLANS ARE UNFINISHED AND ARE NOT TO BE USED FOR ANY TYPE OF CONSTRUCTION.



PLAN NO.	PROJECT	FILE NO.	SHEET NO.
	6017-099-129		13B

12080026129