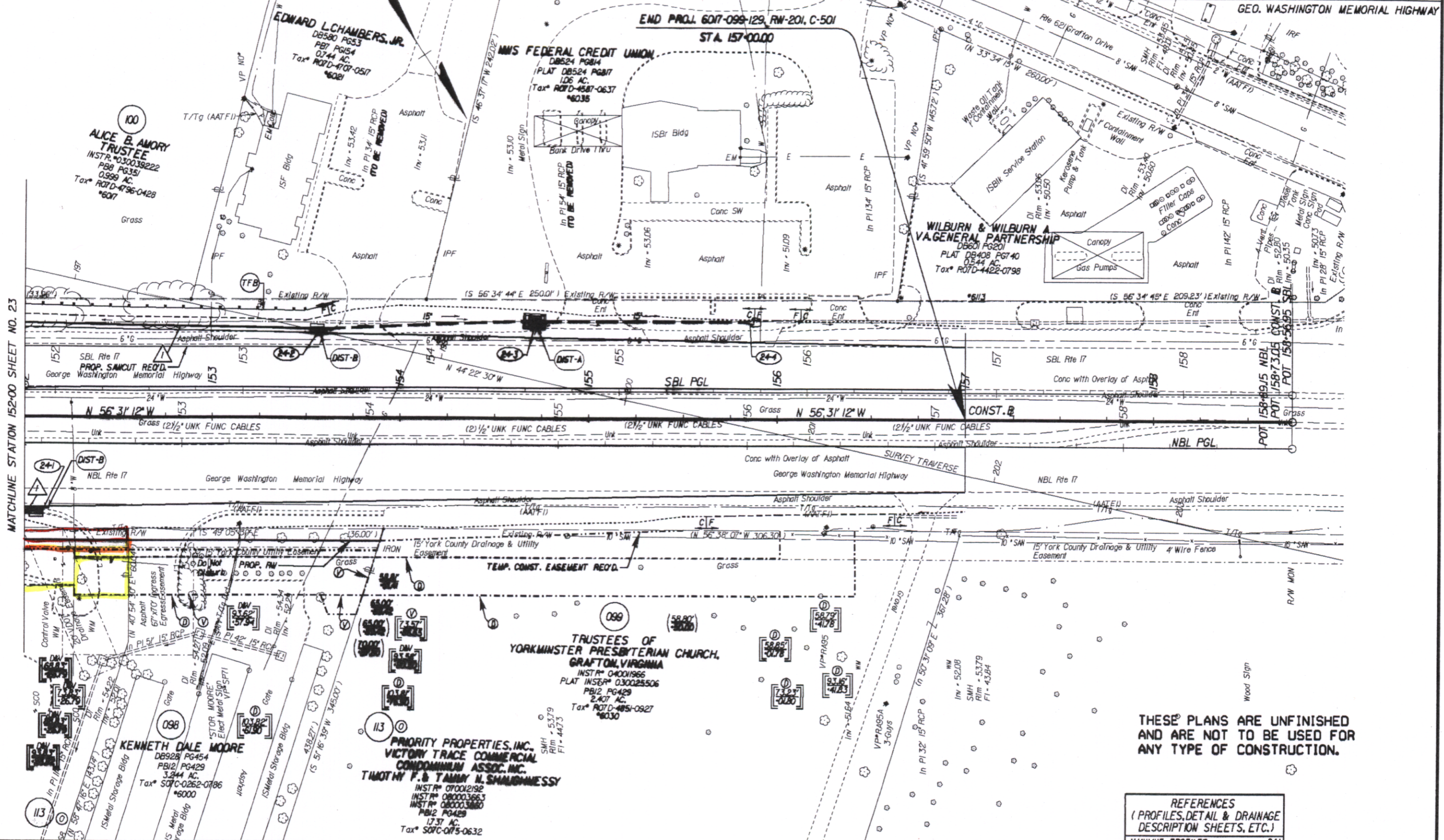


SURVEYED BY BOB HARRIS (1/27/2003)
 SUPERVISED BY J. K. HARRIS, P.E. (757) 925-2406
 DESIGNED BY K. D. MCKINNA, P.E. (1/27/2003) 925-3622
 HAMPTON ROADS DISTRICT DESIGN UNIT

DESIGN FEATURES RELATING TO CONSTRUCTION OR TO REGULATION AND CONTROL OF TRAFFIC MAY BE SUBJECT TO CHANGE AS DEEMED NECESSARY BY THE DEPARTMENT

REVISED	STATE	FEDERAL AID	ROUTE	STATE PROJECT	SHEET NO.
03/23/06	VA.		17	6017-099-129, RW-201, C-501	24

UTILITY OWNERS:
 SEE SHEET 3 FOR DETAILS.



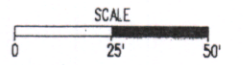
MATCHLINE STATION 152+00 SHEET NO. 23

DOC # 080026356

State Hwy Plat Book # 10 pg 215

THESE PLANS ARE UNFINISHED AND ARE NOT TO BE USED FOR ANY TYPE OF CONSTRUCTION.

REFERENCES (PROFILES, DETAIL & DRAINAGE DESCRIPTION SHEETS, ETC.)	
MAINLINE PROFILES	24A
ENTRANCE PROFILES	?
DRAINAGE DESC.	2(H1) - 2(H7)



- ⊙ Denotes Drainage Structure Number
- ⊕ Denotes Construction Limits In Cuts
- ⊖ Denotes Construction Limits In Fills
- Denotes Profile Grade Line
- ⊕ Denotes variable easement required for Verizon Virginia
- ⊕ Denotes variable easement required for Dominion Virginia Power
- ⊕ Figures without parenthesis or brackets and solid lines denote Proposed Right of Way.
- ⊕ Figures in parenthesis and dot-dot-dashed lines denote Temporary Easements.
- ⊕ Figures in double brackets and dot-dashed lines denote Permanent Utility Easements.
- ⚠ ST'D. CG-T RECD.

NOTES
 See General Notes for E&S Legend

PLAN NO.	PROJECT	FILE NO.	SHEET NO.
	6017-099-129		24