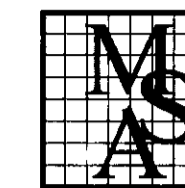




LINE	DIRECTION	LENGTH
L1	N08°20'47"E	38.08'
L2	N01°01'12"W	177.85'
L3	S88°58'48"W	5.00'
L4	N01°01'12"W	10.00'
L5	N88°58'48"E	15.00'
L6	S01°01'12"E	188.67'
L7	S08°20'47"W	38.89'

PLAT OF
RIGHT-OF-WAY AND EASEMENT DEDICATION
PROPERTY OF THE YORK COUNTY
SCHOOL BOARD
YORK COUNTY, VIRGINIA
NELSON MAGISTERIAL DISTRICT
SEPTEMBER 8, 2008



MSA, P.C.
ENVIRONMENTAL SCIENCES • GEOSCIENCES •
PLANNING • SURVEYING ENGINEERING •
LANDSCAPE ARCHITECTURE
5033 ROUSE DRIVE, VIRGINIA BEACH, VA 23462
757-490-9264 (OFC) 757-490-0634 (FAX)
www.msainline.com
OFFICES IN VIRGINIA BEACH &
VIRGINIA'S EASTERN SHORE

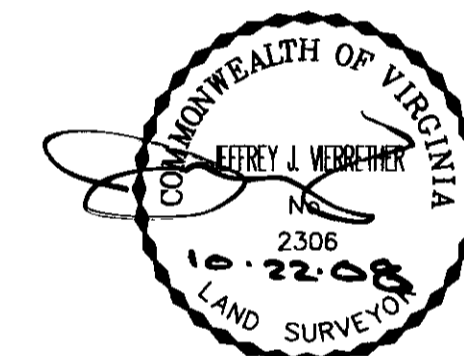
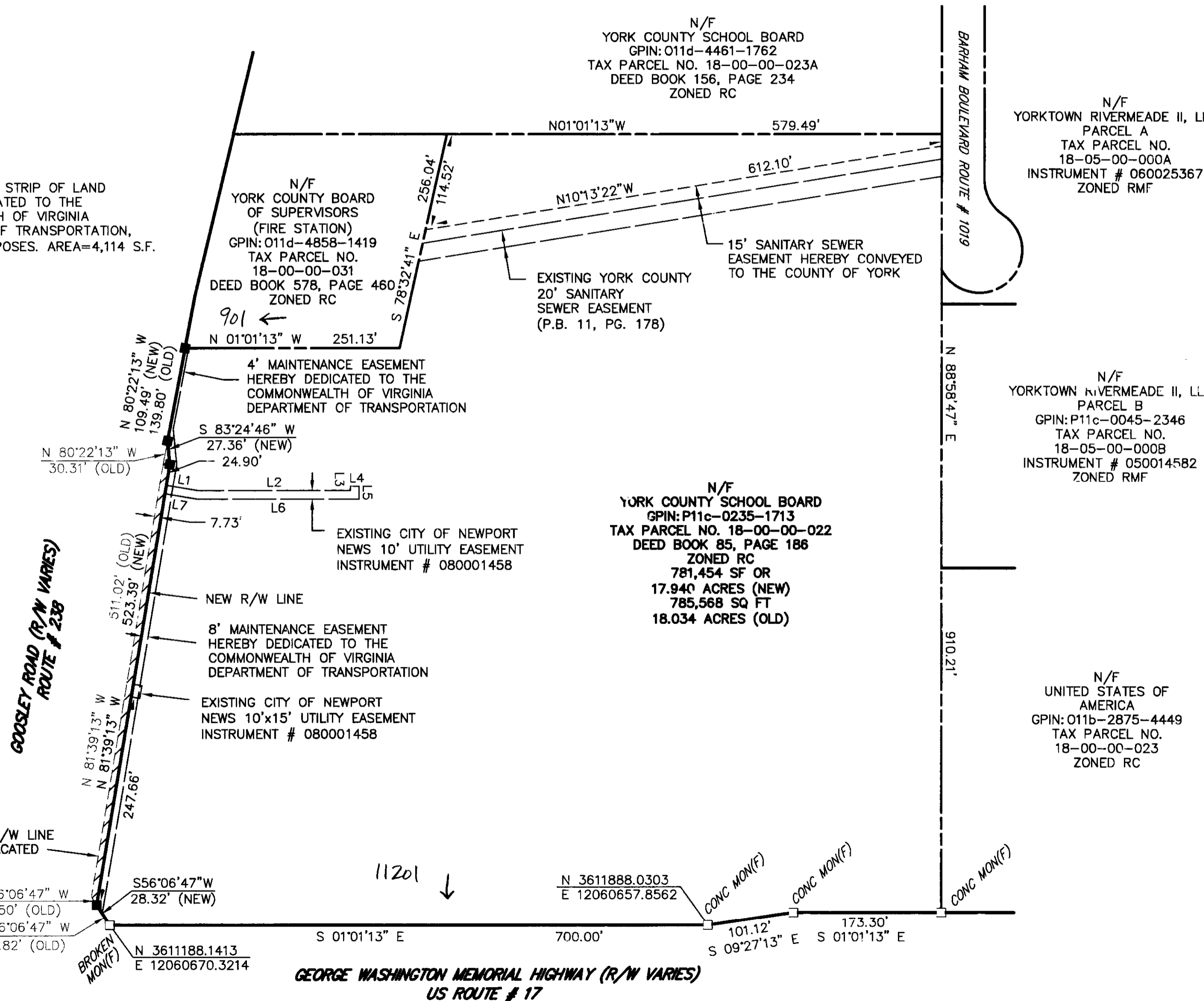


GRAPHIC SCALE
1" = 100'

SHEET 2 OF 2

- LEGEND
- IRON PIN/PIPE FOUND - PIN(F), PIPE(F)
 - IRON PIN SET - PIN(S)
 - MONUMENT FOUND - MON(F)
 - MONUMENT SET - MON(S)

/// DENOTES 7.73' STRIP OF LAND
HEREBY DEDICATED TO THE
COMMONWEALTH OF VIRGINIA
DEPARTMENT OF TRANSPORTATION,
FOR R/W PURPOSES. AREA=4,114 S.F.
OR 0.094 AC.



APPROVED
YORK COUNTY BOARD OF SUPERVISORS

BY: Al Maddalena
PLAT APPROVING AGENT

DATE: 12/2/08

STATE OF VIRGINIA
COUNTY OF YORK
IN THE CLERK'S OFFICE OF THE CIRCUIT COURT FOR
THE COUNTY OF YORK, POQUOSON ON THE 4th DAY
OF December, 2008, THIS MAP WAS PRESENTED
AND ADMITTED TO RECORD AS THE LAW DIRECTS AS 12:42 PM
INSTRUMENT NO. 080026782

TESTE: Lynn S. Mendibar, CLERK.
BY: Jessie Brogden, D.C.