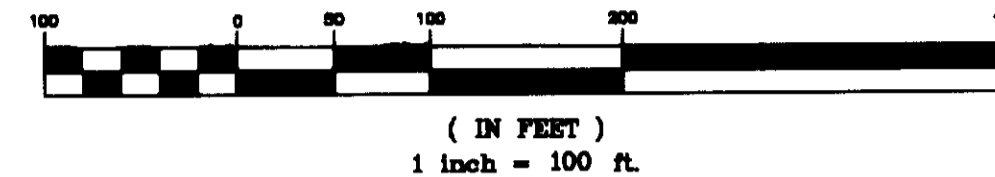


VICINITY MAP 1"=2000'

NOTES:

1. THE RECORDATION OF THIS PLAT SHALL OPERATE TO TRANSFER TO THE COUNTY OF YORK ANY EASEMENT INDICATED ON THE PLAT FOR WATERLINE TO CREATE A PUBLIC RIGHT-OF-PASSAGE OVER THE SAME UNLESS OTHERWISE NOTED ON THIS PLAT.
2. DRAINAGE AND UTILITY EASEMENTS CONVEYED TO THE COUNTY BY RECORDATION OF THIS PLAT SHALL BE EXCLUSIVE TO THE COUNTY, UNLESS OTHERWISE NOTED. CONVEYANCE OF SUCH EASEMENTS TO THE COUNTY ALSO INCLUDE: (I) THE COUNTY'S RIGHT OF INGRESS AND EGRESS OVER THE OWNER'S LAND ADJACENT TO THE EASEMENT AS NECESSARY TO INSPECT, MAINTAIN AND OPERATE THE COUNTY'S FACILITIES WITHIN THE EASEMENT AND (II) THE RIGHT OF THE COUNTY TO ASSIGN TO OTHERS, FROM TIME TO TIME, THE RIGHT TO LOCATE FACILITIES THEREIN SERVING THE PUBLIC, INCLUDING, BUT NOT LIMITED TO, WATER, ELECTRIC, TELEPHONE, COMMUNICATIONS, AND GAS UTILITY FACILITIES.
3. LOCATION OF 20' WATERLINE EASEMENT IS BASED ON AN ACTUAL FIELD LOCATION OF THE WATER LINE AND SURFACE FEATURES.

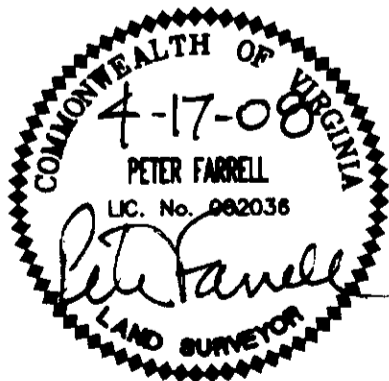
PLAT OF EASEMENT DEDICATION
 FROM
GREAT WOLF
WILLIAMSBURG SPE, LLC
 TO
THE COUNTY OF YORK, VIRGINIA
 BRUTON DISTRICT
 YORK COUNTY, VIRGINIA
 DATE: 06/08/07
 REVISED: 07/10/07
 REVISED: 07/19/07
 REVISED: 04/17/08
 SHEET 1 OF 1
GRAPHIC SCALE



LINE TABLE		
LINE	LENGTH	BEARING
L1	13.96'	N46°30'46"E
L2	95.88'	N46°59'56"E
L5	60.09'	S83°01'11"E
L6	18.42'	S39°31'29"E
L7	24.69'	S50°57'38"W
L8	24.90'	S05°05'42"W
L9	36.56'	S88°55'03"W
L10	26.70'	N00°31'00"W
L11	60.04'	S40°23'41"W
L12	72.36'	S12°01'32"W
L13	174.44'	S20°28'27"E
L14	41.35'	N66°09'57"E

2008 DEC -4 PM 12:43

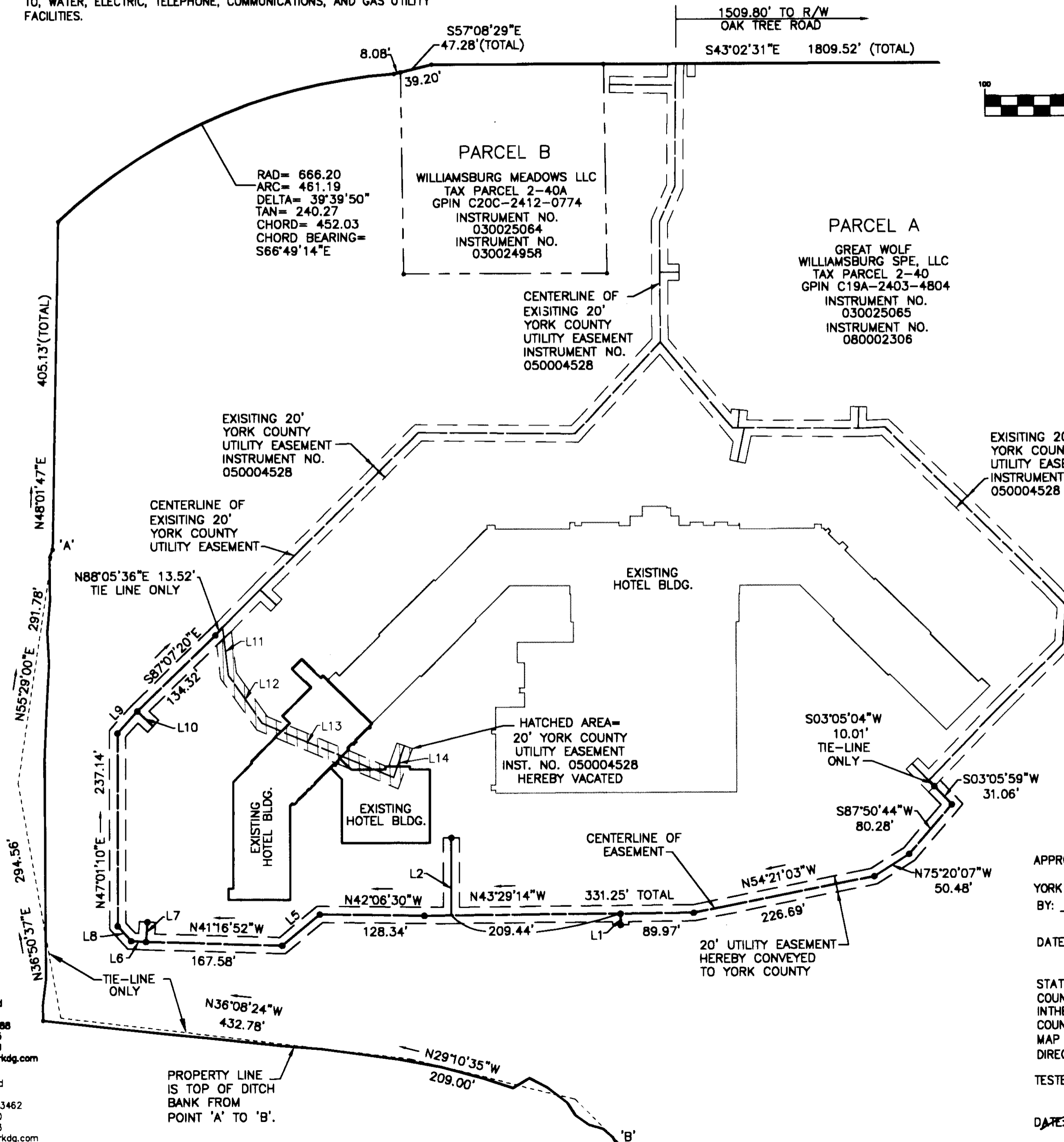
N/F
 CLARICE MARIE L. -
 SHERMAN
 D.B. 219 PG. 763
 TAX PARCEL: 02-00-00-039
 ZONED: EO
 GPIN #: C20C-1236-0152



LANDMARK
DESIGN GROUP
 Engineers • Planners • Surveyors
 Landscape Architects • Environmental Consultants

4029 Ironbound Road
 Suite 100
 Williamsburg, VA 23188
 Tel. (757) 253-2975
 Fax (757) 228-0048
 Email: lmdg@landmarkdg.com

5544 Greenwich Road
 Suite 200
 Virginia Beach, VA 23462
 Tel. (757) 473-2000
 Fax (757) 497-7933
 Email: lmdg@landmarkdg.com



APPROVED:
 YORK COUNTY BOARD OF SUPERVISORS
 BY: *[Signature]*
 PLAT APPROVING AGENT
 DATE: 12/3/08

STATE OF VIRGINIA
 COUNTY OF YORK
 IN THE CLERKS OFFICE OF THE CIRCUIT COURT FOR THE
 COUNTY OF YORK THE 4th DAY OF Dec 2008 THIS
 MAP WAS PRESENTED AND ADMITTED TO RECORD AS THE LAW
 DIRECTS AS INSTRUMENT NO. 080026785

TESTE: Lynn S. Mendibur 12:43 PM
 CLERK
 DATE: by: Quia Brogden, D.C.