

VICINITY MAP 1"=2000'

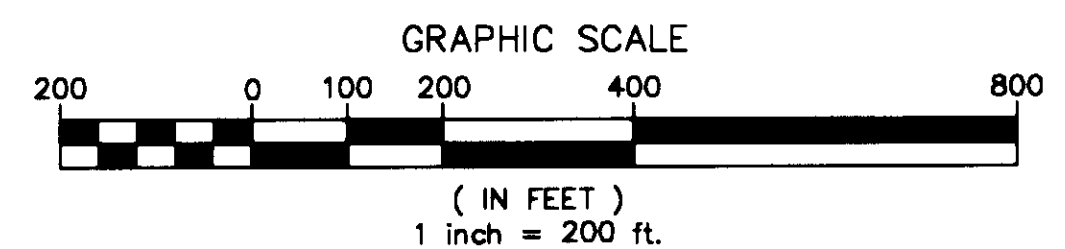
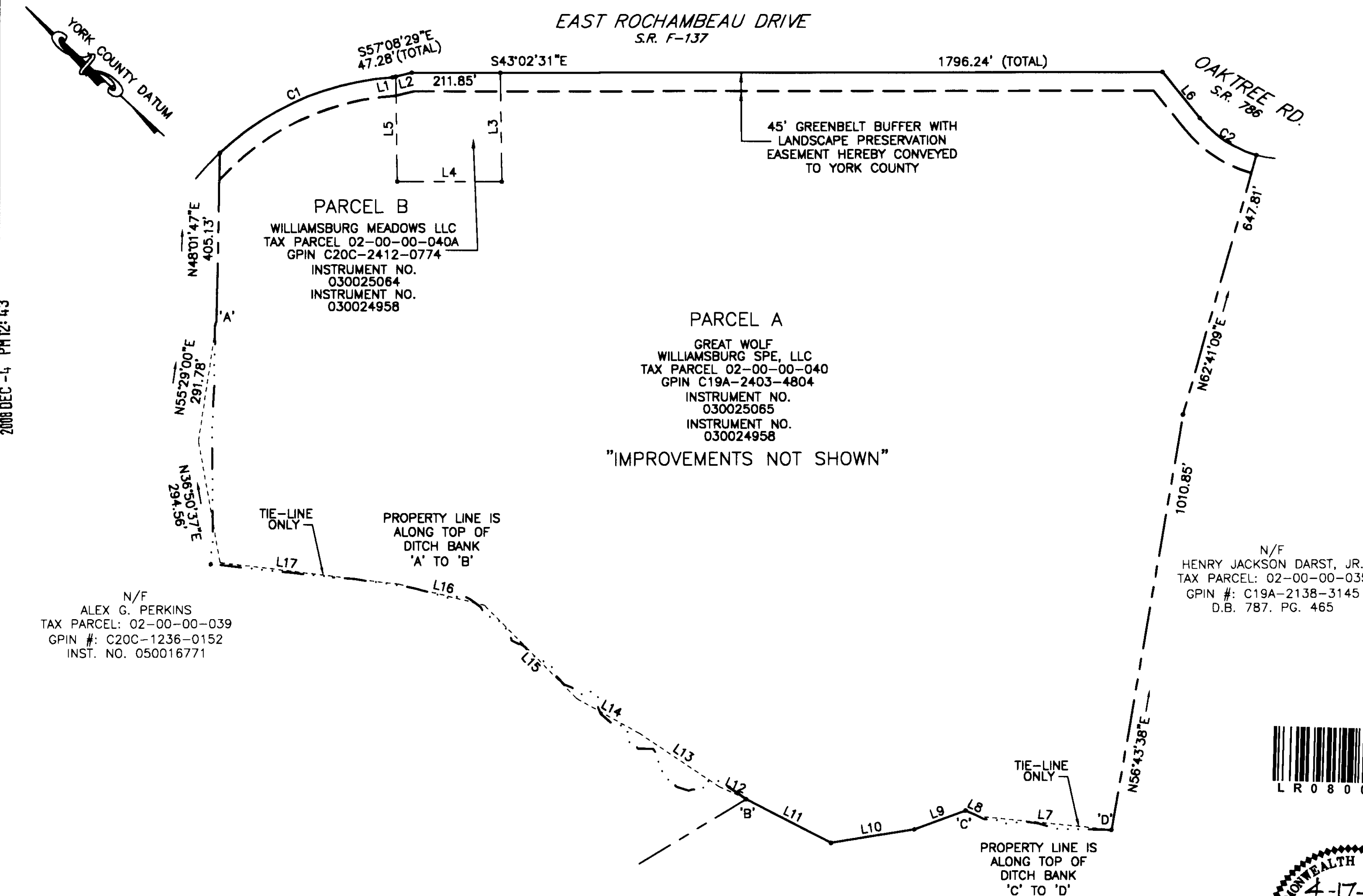
- NOTES:
1. THE RECORDATION OF THIS PLAT SHALL OPERATE TO TRANSFER TO THE COUNTY OF YORK ANY EASEMENT INDICATED ON THE PLAT FOR LANDSCAPE PRESERVATION AND TO CREATE A PUBLIC RIGHT-OF-PASSAGE OVER THE SAME UNLESS OTHERWISE NOTED ON THIS PLAT.
 2. FOR CLARITY, EXISTING EASEMENTS OF RECORD HAVE NOT BEEN SHOWN HEREON.

PLAT OF EASEMENT DEDICATION
 FROM
 GREAT WOLF
 WILLIAMSBURG SPE, LLC
 &
 WILLIAMSBURG MEADOWS, LLC
 TO
 THE COUNTY OF YORK, VIRGINIA
 BRUTON DISTRICT
 YORK COUNTY, VIRGINIA
 DATE: 08/28/07
 REVISED 04/17/08
 SHEET 1 OF 1



4029 Ironbound Road
 Suite 100
 Williamsburg, VA 23185
 Tel. (757) 253-2875
 Fax (757) 229-0049
 Email: lmdg@landmarkdg.com

5544 Greenwich Road
 Suite 200
 Virginia Beach, VA 23462
 Tel. (757) 473-2000
 Fax (757) 497-7933
 Email: lmdg@landmarkdg.com



LINE TABLE		
LINE	LENGTH	BEARING
L1	8.08'	S57°08'29"E
L2	39.20'	S57°08'29"E
L3	262.11'	N46°10'04"E
L4	250.00'	S43°02'31"E
L5	252.56'	S46°10'04"W
L6	141.87'	S08°10'56"W
L7	321.13'	S37°08'18"E
L8	32.46'	S17°44'55"E
L9	130.25'	S63°12'54"E
L10	201.67'	S52°18'44"E
L11	227.90'	S15°36'36"E
L12	72.81'	N18°17'54"W
L13	228.83'	N09°01'13"W
L14	170.89'	N14°00'35"W
L15	315.81'	N02°18'33"E
L16	209.00'	N29°10'35"W
L17	432.78'	N36°08'24"W

CURVE TABLE						
CURVE	LENGTH	RADIUS	TANGENT	CHORD	CHORD BEARING	DELTA
C1	461.19'	666.20'	240.27'	452.03'	N66°49'14"W	39°39'50"
C2	165.09'	267.15'	85.27'	162.47'	S09°31'15"E	35°24'22"

2008 DEC -4 PM 12:43



APPROVED:
 YORK COUNTY BOARD OF SUPERVISORS
 BY: Al Maddalena
 PLAT APPROVING AGENT
 DATE: 12/9/08

STATE OF VIRGINIA
 COUNTY OF YORK
 IN THE CLERK'S OFFICE OF THE CIRCUIT COURT FOR THE
 COUNTY OF YORK THE 4th DAY OF Dec 2008 THIS
 MAP WAS PRESENTED AND ADMITTED TO RECORD AS THE LAW
 DIRECTS AS INSTRUMENT NO. 080006787
 TESTE: Lynn S. Mendibur 12:43 PM
 CLERK
 DATE: 4: Anna Brogden, D.C.