

VICINITY MAP 1"=2000'

NOTES:

1. THE RECORDATION OF THIS PLAT SHALL OPERATE TO TRANSFER TO THE COUNTY OF YORK ANY EASEMENT INDICATED ON THE PLAT FOR SANITARY SEWER TO CREATE A PUBLIC RIGHT-OF-PASSAGE OVER THE SAME UNLESS OTHERWISE NOTED ON THIS PLAT.
2. DRAINAGE AND UTILITY EASEMENTS CONVEYED TO THE COUNTY BY RECORDATION OF THIS PLAT SHALL BE EXCLUSIVE TO THE COUNTY, UNLESS OTHERWISE NOTED. CONVEYANCE OF SUCH EASEMENTS TO THE COUNTY ALSO INCLUDE: (I) THE COUNTY'S RIGHT OF INGRESS AND EGRESS OVER THE OWNER'S LAND ADJACENT TO THE EASEMENT AS NECESSARY TO INSPECT, MAINTAIN AND OPERATE THE COUNTY'S FACILITIES WITHIN THE EASEMENT AND (II) THE RIGHT OF THE COUNTY TO ASSIGN TO OTHERS, FROM TIME TO TIME, THE RIGHT TO LOCATE FACILITIES THEREIN SERVING THE PUBLIC, INCLUDING, BUT NOT LIMITED TO, WATER, ELECTRIC, TELEPHONE, COMMUNICATIONS, AND GAS UTILITY FACILITIES.

PLAT OF EASEMENT DEDICATION  
 FROM  
 GREAT WOLF  
 WILLIAMSBURG SPE, LLC  
 AND  
 WILLIAMSBURG MEADOWS, LLC  
 TO  
 THE COUNTY OF YORK, VIRGINIA  
 BRUTON DISTRICT  
 YORK COUNTY, VIRGINIA  
 DATE: 10/23/08 SCALE: 1"=60'

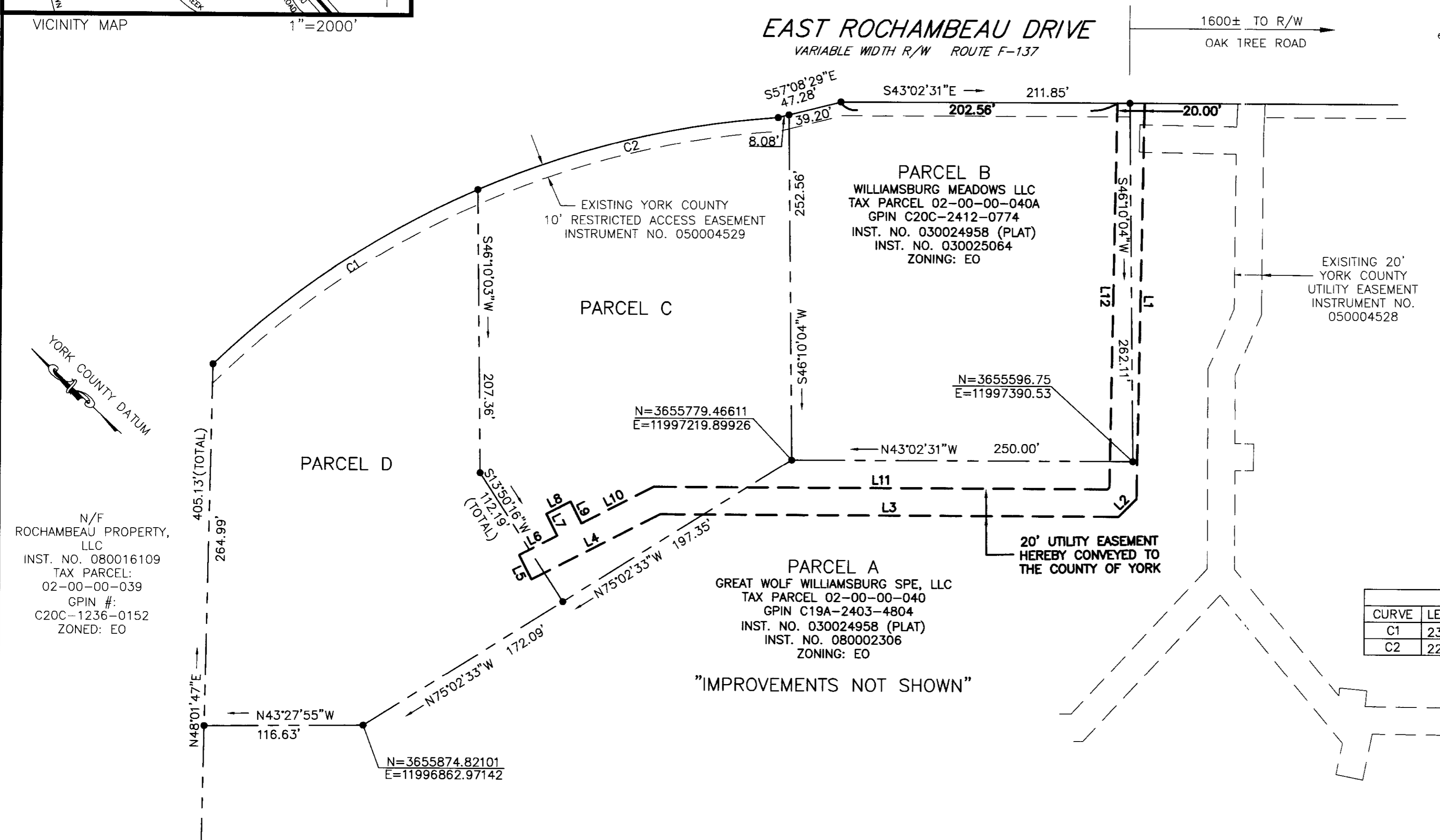
EAST ROCHAMBEAU DRIVE  
 VARIABLE WIDTH R/W ROUTE F-137

1600± TO R/W  
 OAK TREE ROAD

GRAPHIC SCALE



( IN FEET )  
 1 inch = 60 ft.



LINE TABLE		
LINE	LENGTH	BEARING
L1	289.74'	N47°48'49"E
L2	18.38'	S87°59'54"E
L3	336.16'	S42°59'54"E
L4	105.78'	S70°02'19"E
L5	20.00'	N19°57'41"E
L6	31.33'	S70°02'19"E
L7	17.84'	N19°57'41"E
L8	20.00'	S70°02'19"E
L9	17.84'	S19°57'41"W
L10	59.25'	S70°02'19"E
L11	332.68'	S42°59'54"E
L12	281.32'	N47°48'48"E

CURVE TABLE						
CURVE	LENGTH	RADIUS	TANGENT	CHORD	CHORD BEARING	DELTA
C1	233.39'	666.20'	117.90'	232.20'	N76°36'59"W	20°04'20"
C2	227.80'	666.20'	115.02'	226.69'	S56°47'04"E	19°35'30"

N/F  
 ROCHAMBEAU PROPERTY,  
 LLC  
 INST. NO. 080016109  
 TAX PARCEL:  
 02-00-00-039  
 GPIN #:  
 C20C-1236-0152  
 ZONED: EO

**LANDMARK**  
**DESIGN GROUP**  
 Engineers • Planners • Surveyors  
 Landscape Architects • Environmental Consultants

4029 Ironbound Road  
 Suite 100  
 Williamsburg, VA 23188  
 Tel. (757) 253-2975  
 Fax (757) 229-0049  
 Email: lmdg@landmarkdg.com

5544 Greenwich Road  
 Suite 200  
 Virginia Beach, VA 23462  
 Tel. (757) 473-2000  
 Fax (757) 497-7933  
 Email: lmdg@landmarkdg.com



APPROVED:

YORK COUNTY BOARD OF SUPERVISORS

BY: *Al Maddalena*  
 PLAT APPROVING AGENT

DATE: 1/15/09

STATE OF VIRGINIA, COUNTY OF YORK  
 IN THE CLERK'S OFFICE OF THE CIRCUIT COURT FOR THE  
 COUNTY OF YORK-POQUOSON THE 15<sup>th</sup> DAY OF  
 January 2009, THIS MAP WAS PRESENTED AND  
 ADMITTED TO RECORD AS THE LAW DIRECTS AS  
 INSTRUMENT NO. 090000722 10:53AM  
 TESTE: *Lynn S. Mendibur*  
 CLERK

BY: *Lynn S. Mendibur*  
 O.C.