

PROPERTY CURVE TABLE						
CURVE	DELTA ANGLE	CHORD BEARING	TANGENT	RADIUS	ARC LENGTH	CHORD LENGTH
C1	12°21'44"	N 61°48'16" E	58.48'	540.00'	116.51'	116.28'
C2	26°09'13"	N 42°32'48" E	125.43'	540.00'	246.49'	244.36'

Filed in the Clerk's Office, Circuit Court,
York County, Virginia,
the 21st day of January, 2009
Teste: Lynn S. Merriam, Clerk
By: *[Signature]*, D.C.

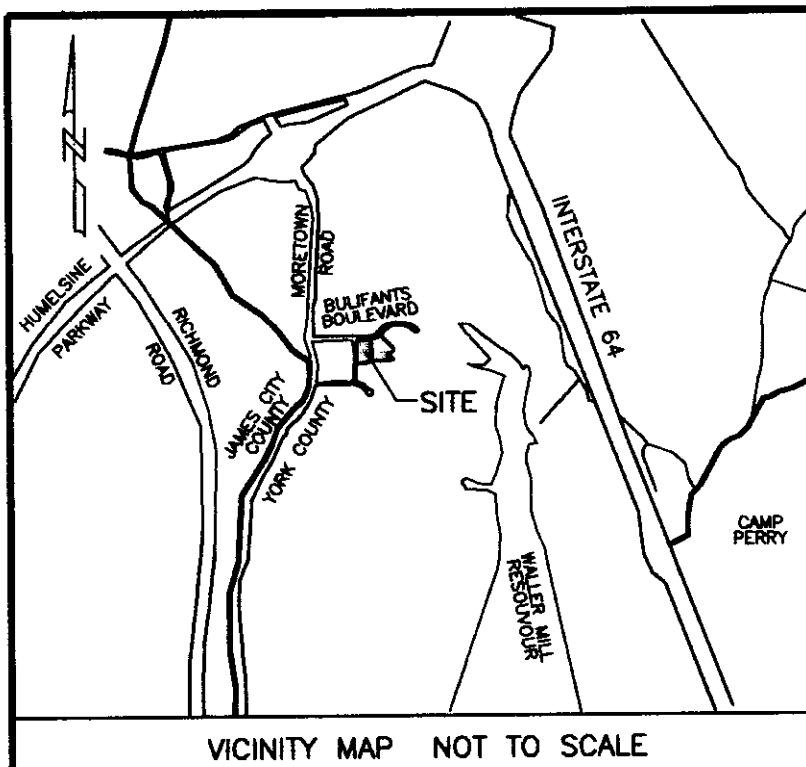
PLAT OF EASEMENT DEDICATION
FROM
CAZMERS INTERNATIONAL CENTER, LLC
TO
COUNTY OF YORK
BRUTON DISTRICT, COUNTY OF YORK, VIRGINIA
DATE: 12/09/2008 SCALE: 1"=50' JOB #07-359
REV: 01/05/2009



N/F
BULIFANTS, LP
STORMWATER MANAGEMENT PARCEL
PHASE II
TAX PARCEL 02-19-00-000A
GPIN: C18B-2819-4991
INSTR. # 050002172

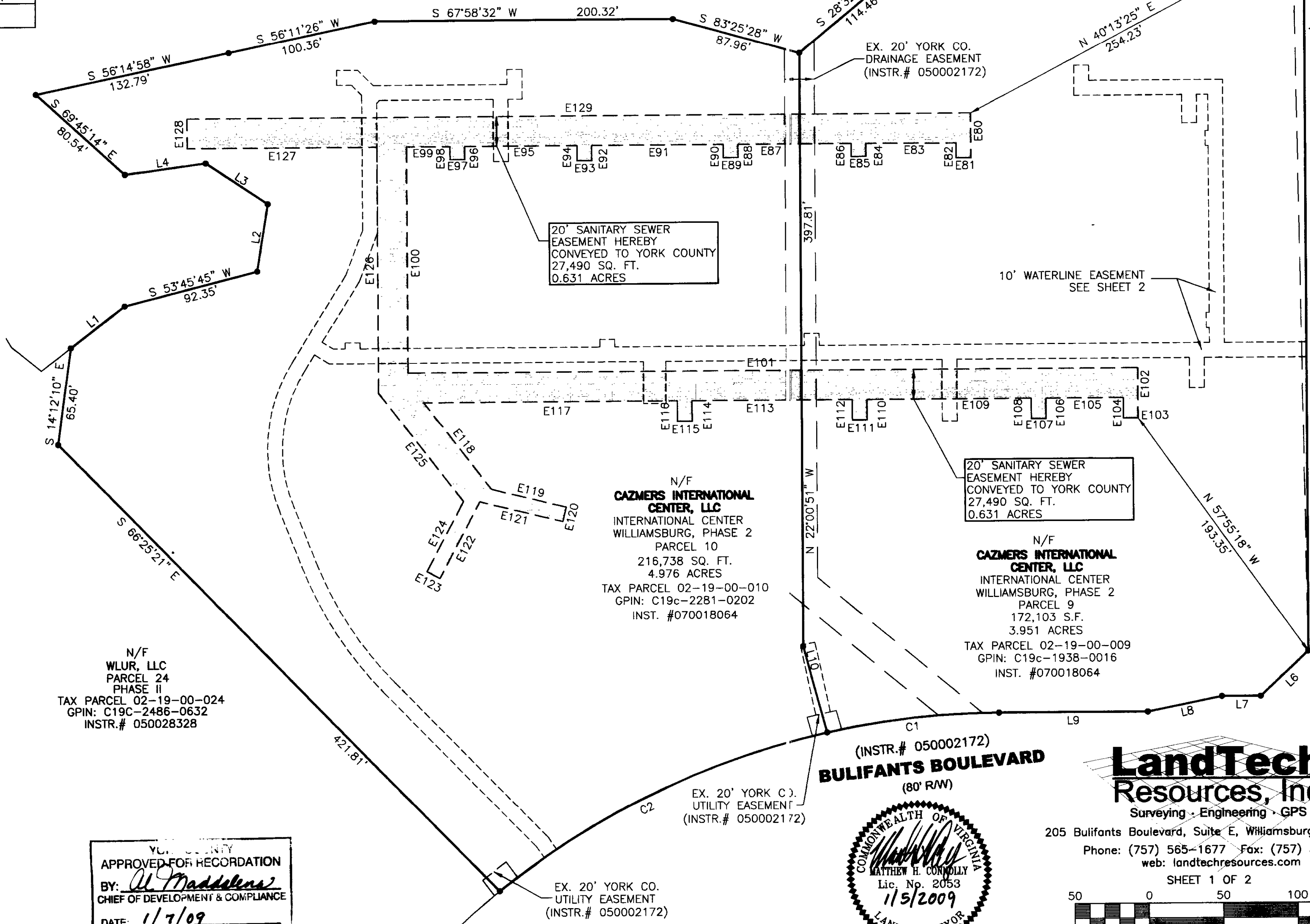
- NOTES:
1. THIS PLAT WAS PRODUCED WITHOUT THE BENEFIT OF A TITLE REPORT AND REFLECTS ONLY THOSE ENCUMBRANCES, EASEMENTS AND SETBACKS AS SHOWN HEREON.
 2. WETLANDS, IF ANY, WERE NOT LOCATED FOR THIS SURVEY.
 3. UNDERGROUND UTILITIES WERE NOT LOCATED.
 4. EXISTING IMPROVEMENTS NOT SHOWN FOR CLARITY.
 5. PROPERTY LINES SHOWN ARE BASED ON RECORD PLAT # INSTR. #050002172
 6. THIS PLAT DOES NOT CONSTITUTE A SUBDIVISION OF LAND OR BOUNDARY SURVEY AND IS INTENDED FOR EASEMENT ACQUISITION PURPOSES ONLY.

N/F
MOORETOWN COMMONS, LLC
PARCEL 8
PHASE III
TAX PARCEL 02-19-03-008
GPIN: C18A-2190-4595
INSTR. # 070001225



PROPERTY LINE TABLE		
LINE	BEARING	DISTANCE
L1	N 30°42'44" E	45.72'
L2	N 12°48'54" W	45.80'
L3	N 78°25'06" W	49.96'
L4	S 60°16'45" W	54.88'
L5	N 44°22'42" W	4.82'
L6	S 24°50'00" W	43.85'
L7	S 67°59'09" W	26.17'
L8	S 56°40'33" W	50.99'
L9	S 67°59'09" W	100.24'
L10	N 37°32'55" W	59.70'

EASEMENT LINE TABLE		
LINE	BEARING	DISTANCE
E80	N 22°00'51" W	29.90'
E81	N 67°59'09" E	10.00'
E82	S 22°00'51" E	9.90'
E83	N 67°59'09" E	60.55'
E84	N 22°00'51" W	8.56'
E85	N 67°59'09" E	10.00'
E86	S 22°00'51" E	8.56'
E87	N 67°59'09" E	75.98'
E88	N 22°00'51" W	8.70'
E89	N 67°59'09" E	10.00'
E90	S 22°00'51" E	8.70'
E91	N 67°59'09" E	88.30'
E92	N 22°00'51" W	9.90'
E93	N 67°59'09" E	10.00'
E94	S 22°00'51" E	9.90'
E95	N 67°59'09" E	75.34'
E96	N 22°00'51" W	8.57'
E97	N 67°59'09" E	10.00'
E98	S 22°00'51" E	8.57'
E99	N 67°59'09" E	28.99'
E100	N 22°00'51" W	151.34'
E101	S 67°59'09" W	490.73'
E102	N 22°00'51" W	33.63'
E103	N 67°59'09" E	10.00'
E104	S 22°00'51" E	13.63'
E105	N 67°59'09" E	51.99'
E106	N 22°00'51" W	13.63'
E107	N 67°59'09" E	10.00'
E108	S 22°00'51" E	13.63'
E109	N 67°59'09" E	110.34'
E110	N 22°00'51" W	13.63'
E111	N 67°59'09" E	10.00'
E112	S 22°00'51" E	13.63'
E113	N 67°59'09" E	107.68'
E114	N 22°00'51" W	13.75'
E115	N 67°59'09" E	10.00'
E116	S 22°00'51" E	13.75'
E117	N 67°59'09" E	170.36'
E118	N 59°42'44" W	73.90'
E119	S 81°43'30" W	51.42'
E120	N 08°16'30" W	10.00'
E121	N 81°43'30" E	57.30'
E122	N 05°51'46" E	57.86'
E123	S 84°08'14" E	10.00'
E124	S 05°51'46" W	53.04'
E125	S 59°42'44" E	92.21'
E126	S 22°00'51" E	164.76'
E127	N 67°59'09" E	127.78'
E128	S 22°00'51" E	20.00'
E129	S 67°59'09" W	526.93'

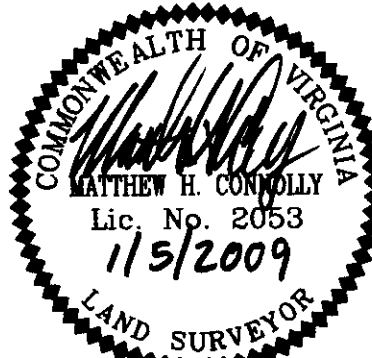


N/F
WLUR, LLC
PARCEL 24
PHASE II
TAX PARCEL 02-19-00-024
GPIN: C19C-2486-0632
INSTR. # 050028328

N/F
CAZMERS INTERNATIONAL
CENTER, LLC
INTERNATIONAL CENTER
WILLIAMSBURG, PHASE 2
PARCEL 10
216,738 SQ. FT.
4.976 ACRES
TAX PARCEL 02-19-00-010
GPIN: C19c-2281-0202
INSTR. #070018064

N/F
CAZMERS INTERNATIONAL
CENTER, LLC
INTERNATIONAL CENTER
WILLIAMSBURG, PHASE 2
PARCEL 9
172,103 S.F.
3.951 ACRES
TAX PARCEL 02-19-00-009
GPIN: C19c-1938-0016
INSTR. #070018064

YORK COUNTY
APPROVED FOR RECORDATION
BY: *[Signature]*
CHIEF OF DEVELOPMENT & COMPLIANCE
DATE: 1/7/09



LandTech Resources, Inc.
Surveying · Engineering · GPS
205 Bulifants Boulevard, Suite E, Williamsburg, Virginia 23188
Phone: (757) 565-1677 Fax: (757) 565-0782
web: landtechresources.com
SHEET 1 OF 2
Scale: 1" = 50'

(INSTR. # 050025774)
ROSCOE CROSSING
(60' R/W)

2009 JAN 21 AM 10:53