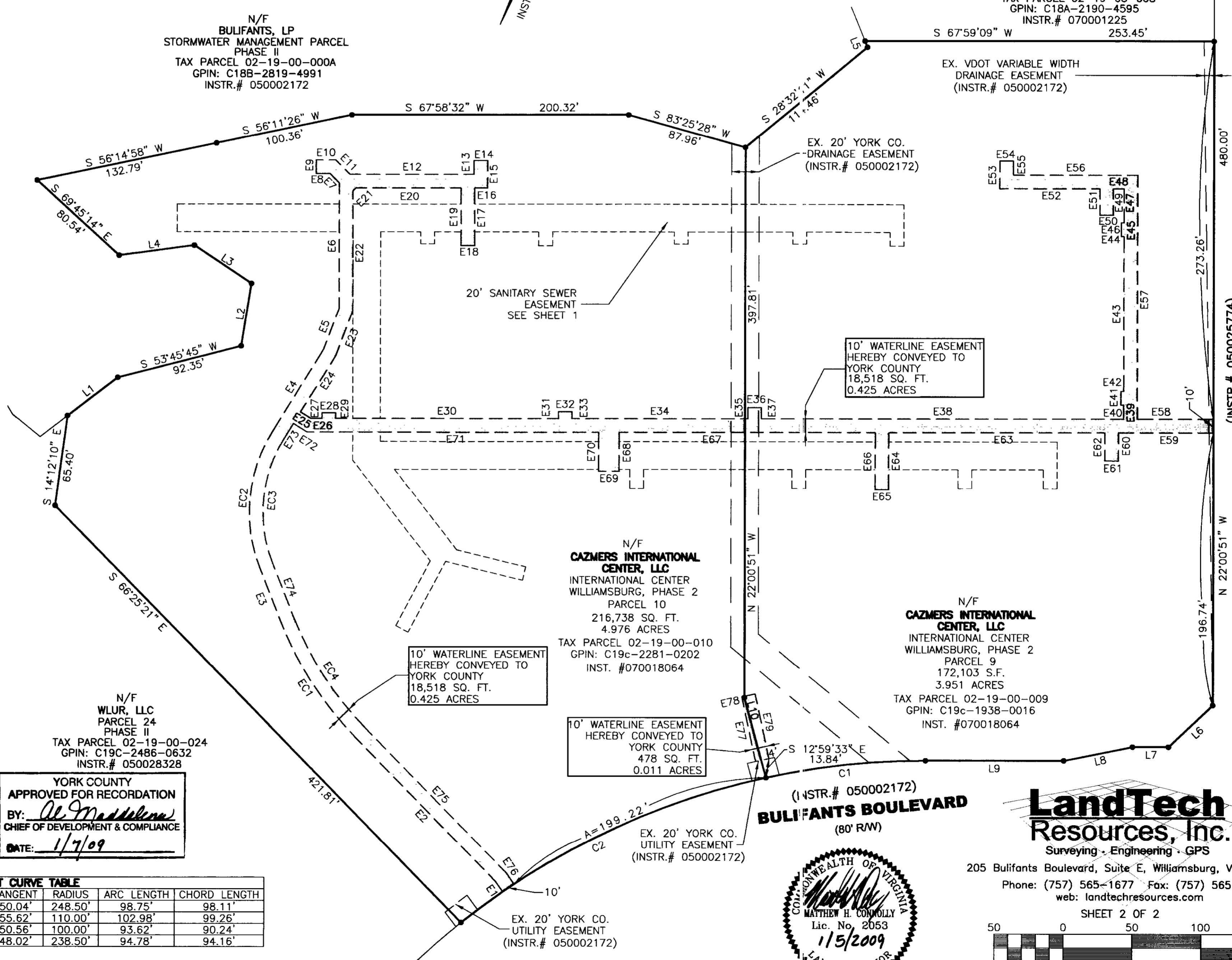


LINE	BEARING	DISTANCE
E1	S 56°02'45" E	8.80'
E2	S 66°25'21" E	146.42'
E3	S 43°39'11" E	42.59'
E4	S 09°59'20" W	69.68'
E5	S 01°15'40" E	31.83'
E6	S 22°00'51" E	90.52'
E7	S 67°00'51" E	9.48'
E8	N 67°59'09" E	10.22'
E9	S 22°00'51" E	10.00'
E10	S 67°59'09" W	14.36'
E11	N 67°00'51" W	14.63'
E12	S 67°59'09" W	89.63'
E13	S 22°00'51" E	10.06'
E14	S 67°59'09" W	10.00'
E15	N 22°00'51" W	20.06'
E16	N 67°59'09" E	9.28'
E17	N 22°00'51" W	41.35'
E18	N 67°59'09" E	10.00'
E19	S 22°00'51" E	41.35'
E20	N 67°59'09" E	75.99'
E21	N 22°59'09" E	3.03'
E22	N 22°00'51" W	86.57'
E23	N 01°15'40" W	34.65'
E24	N 09°59'20" E	47.77'
E25	N 80°00'40" W	8.83'
E26	S 67°59'09" W	7.89'
E27	S 22°00'51" E	4.00'
E28	S 67°59'09" W	10.00'
E29	N 22°00'51" W	4.00'
E30	S 67°59'09" W	161.02'
E31	S 22°00'51" E	5.00'
E32	S 67°59'09" W	10.00'
E33	N 22°00'51" W	5.00'
E34	S 67°59'09" W	127.53'
E35	S 22°00'51" E	8.00'
E36	S 67°59'09" W	10.00'
E37	N 22°00'51" W	8.00'
E38	S 67°59'09" W	262.61'
E39	S 22°00'51" E	10.00'
E40	N 67°59'09" E	2.00'
E41	S 22°00'51" E	10.00'
E42	S 67°59'09" W	2.00'
E43	S 22°00'51" E	111.92'
E44	N 67°59'09" E	2.00'
E45	S 22°00'51" E	10.00'
E46	S 67°59'09" W	2.00'
E47	S 22°00'51" E	24.38'
E48	N 67°59'09" E	7.58'
E49	N 22°00'51" W	19.02'
E50	N 67°59'09" E	10.00'
E51	S 22°00'51" E	19.02'
E52	N 67°59'09" E	72.68'
E53	S 22°00'51" E	20.06'
E54	S 67°59'09" W	10.00'
E55	N 22°00'51" W	10.06'
E56	S 67°59'09" W	90.27'
E57	N 22°00'51" W	176.30'
E58	S 67°59'09" W	55.17'
E59	N 67°59'09" E	68.75'
E60	N 22°00'51" W	20.07'
E61	N 67°59'09" E	10.00'
E62	S 22°00'51" E	20.07'
E63	N 67°59'09" E	156.74'
E64	N 22°00'51" W	41.23'
E65	N 67°59'09" E	10.00'
E66	S 22°00'51" E	41.23'
E67	N 67°59'09" E	185.57'
E68	N 22°00'51" W	28.00'
E69	N 67°59'09" E	15.00'
E70	S 22°00'51" E	28.00'
E71	N 67°59'09" E	211.02'
E72	S 80°00'40" E	11.70'
E73	N 09°59'20" E	12.90'
E74	N 43°39'11" W	42.59'
E75	N 66°25'21" W	147.33'
E76	N 56°02'45" W	9.71'
E77	S 34°21'34" E	47.78'
E78	S 55°38'26" W	10.00'
E79	N 34°21'34" W	47.77'

YORK COUNTY
APPROVED FOR RECORDATION
BY: *Al. Maddalena*
CHIEF OF DEVELOPMENT & COMPLIANCE
DATE: 1/7/09

CURVE	DELTA ANGLE	CHORD BEARING	TANGENT	RADIUS	ARC LENGTH	CHORD LENGTH
EC1	22°46'10"	S 55°02'16" E	50.04'	248.50'	98.75'	98.11'
EC2	53°38'31"	S 16°49'56" E	55.62'	110.00'	102.98'	99.26'
EC3	53°38'31"	N 16°49'56" W	50.56'	100.00'	93.62'	90.24'
EC4	22°46'10"	N 55°02'16" W	48.02'	238.50'	94.78'	94.16'



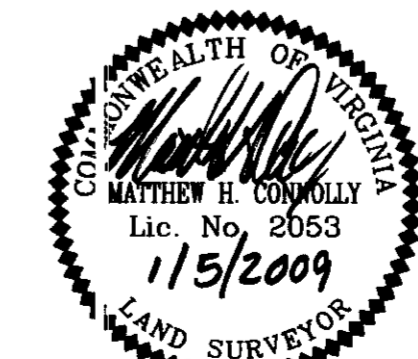
File: [unclear] Circuit Court,
York Co., - Poquoson, VA
the 21st day of January, 2009
Wit: Lynn S. Mendibur, Clerk
By: *James S. [unclear]*, D.C.

PLAT OF EASEMENT DEDICATION
FROM
CAZMERS INTERNATIONAL CENTER, LLC
TO
COUNTY OF YORK
BRUTON DISTRICT, COUNTY OF YORK, VIRGINIA
DATE: 12/09/2008 SCALE: 1"=50' JOB #07-359
REV: 01/05/2009 N/F
MOORETOWN COMMONS, LLC
PARCEL 8
PHASE III
TAX PARCEL 02-19-03-008
GPIN: C18A-2190-4595
INSTR.# 070001225

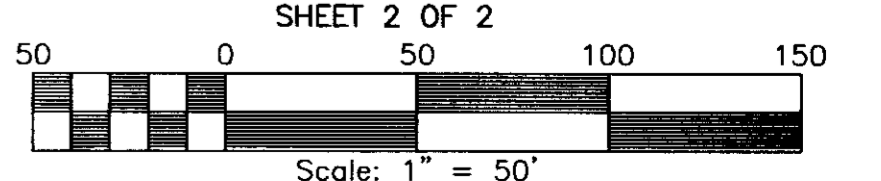
N/F
CAZMERS INTERNATIONAL
CENTER, LLC
INTERNATIONAL CENTER
WILLIAMSBURG, PHASE 2
PARCEL 10
216,738 SQ. FT.
4.976 ACRES
TAX PARCEL 02-19-00-010
GPIN: C19c-2281-0202
INST. #070018064

N/F
CAZMERS INTERNATIONAL
CENTER, LLC
INTERNATIONAL CENTER
WILLIAMSBURG, PHASE 2
PARCEL 9
172,103 S.F.
3.951 ACRES
TAX PARCEL 02-19-00-009
GPIN: C19c-1938-0016
INST. #070018064

(INSTR.# 050002172)
BULIFANTS BOULEVARD
(80' RW)



LandTech Resources, Inc.
Surveying - Engineering - GPS
205 Bulifants Boulevard, Suite E, Williamsburg, Virginia 23188
Phone: (757) 565-1677 Fax: (757) 565-0782
web: landtechresources.com



(INSTR.# 050025774)
ROSCOE CROSSING
(60' RW)

2009 JAN 21 AM 10:53