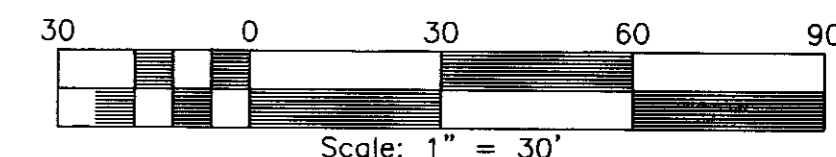


CORRECTED  
 SUBDIVISION PLAT OF  
**RIVERWALK TOWNES**  
 PHASE III & V-A  
 NELSON MAGISTERIAL DISTRICT  
 YORK COUNTY, VIRGINIA  
 DATE: 1/21/09 SCALE: 1"=30' JOB #07-130

SHEET 3 OF 4

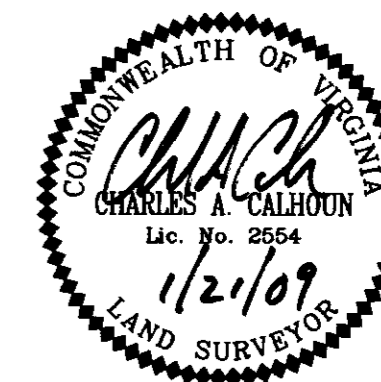
**LandTech**  
**Resources, Inc.**  
 Surveying - Engineering - GPS

205-E Bulifants Blvd., Williamsburg, VA 23188  
 Phone: (757) 565-1677 Fax: (757) 565-0782  
 web: landtechresources.com



**LEGEND**

- DENOTES IRON ROD SET UNLESS OTHERWISE NOTED
- IPF = IRON PIPE FOUND
- IRF = IRON ROD FOUND
- CMF = CONCRETE MONUMENT FOUND
- ▨ BMP IMPOUNDMENT EASEMENT AREA HEREBY CONVEYED TO RIVERWALK TOWNES HOMEOWNERS ASSOCIATION



**APPROVED:**  
**YORK COUNTY BOARD OF SUPERVISORS**

BY: *Al Maddalena*  
 PLAT APPROVING AGENT

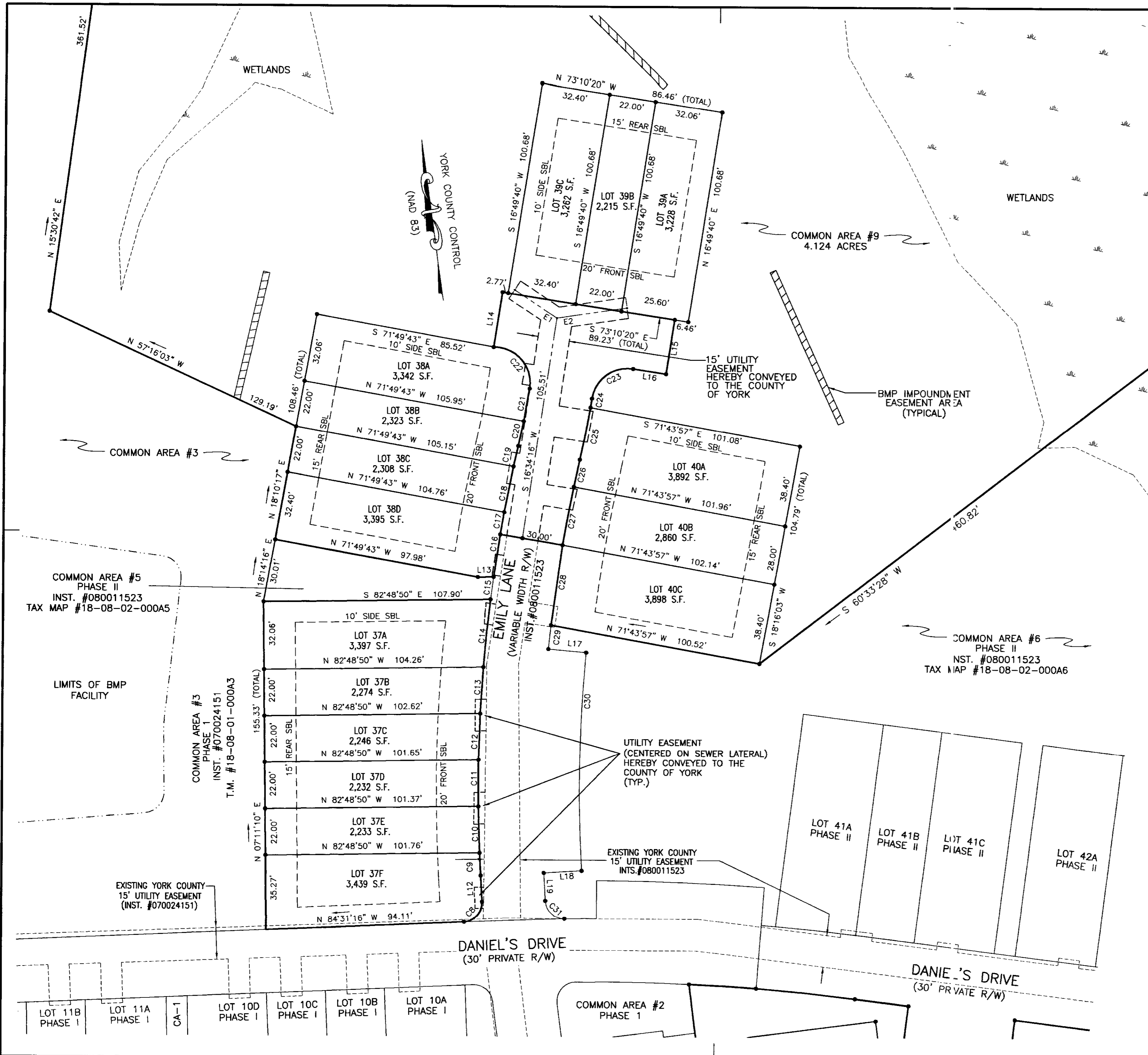
DATE: 1/28/09

STATE OF VIRGINIA  
 COUNTY OF YORK  
 IN THE CLERK'S OFFICE OF THE CIRCUIT COURT FOR THE  
 COUNTY OF YORK-POQUOSON THE 28<sup>th</sup> DAY OF January  
 2009. THIS PLAT WAS PRESENTED AND ADMITTED TO RECORD  
 AS THE LAW DIRECTS AS INSTRUMENT NO. 090001542

TESTE: *Lynn S. Mendibur*  
 CLERK

BY: *Jessie Brogden, D.C.*

LANDTECH RESOURCES, INC.



2009 JAN 29 PM 1:19

1:17 pm