

CORRECTED
SUBDIVISION PLAT OF
RIVERWALK TOWNES
PHASE III & V-A

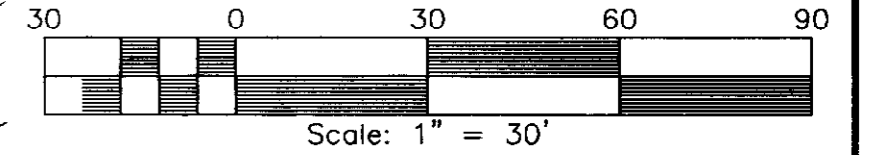
NELSON MAGISTERIAL DISTRICT
YORK COUNTY, VIRGINIA

DATE: 1/21/09 SCALE: 1"=30' JOB #07-130

SHEET 4 OF 4

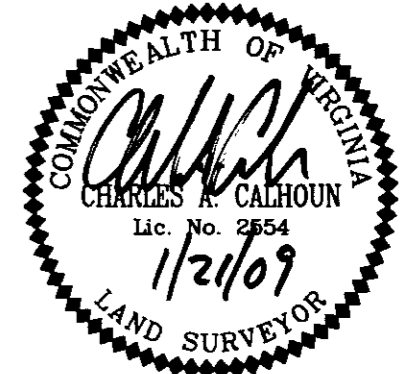
LandTech
Resources, Inc.
Surveying • Engineering • GPS

205-E Bulifants Blvd., Williamsburg, VA 23188
Phone: (757) 565-1677 Fax: (757) 565-0782
web: landtechresources.com



LEGEND

- DENOTES IRON ROD SET UNLESS OTHERWISE NOTED
- IPF = IRON PIPE FOUND
- IRF = IRON ROD FOUND
- CMF = CONCRETE MONUMENT FOUND
- BMP IMPOUNDMENT EASEMENT AREA HEREBY CONVEYED TO RIVERWALK TOWNES HOMEOWNERS ASSOCIATION



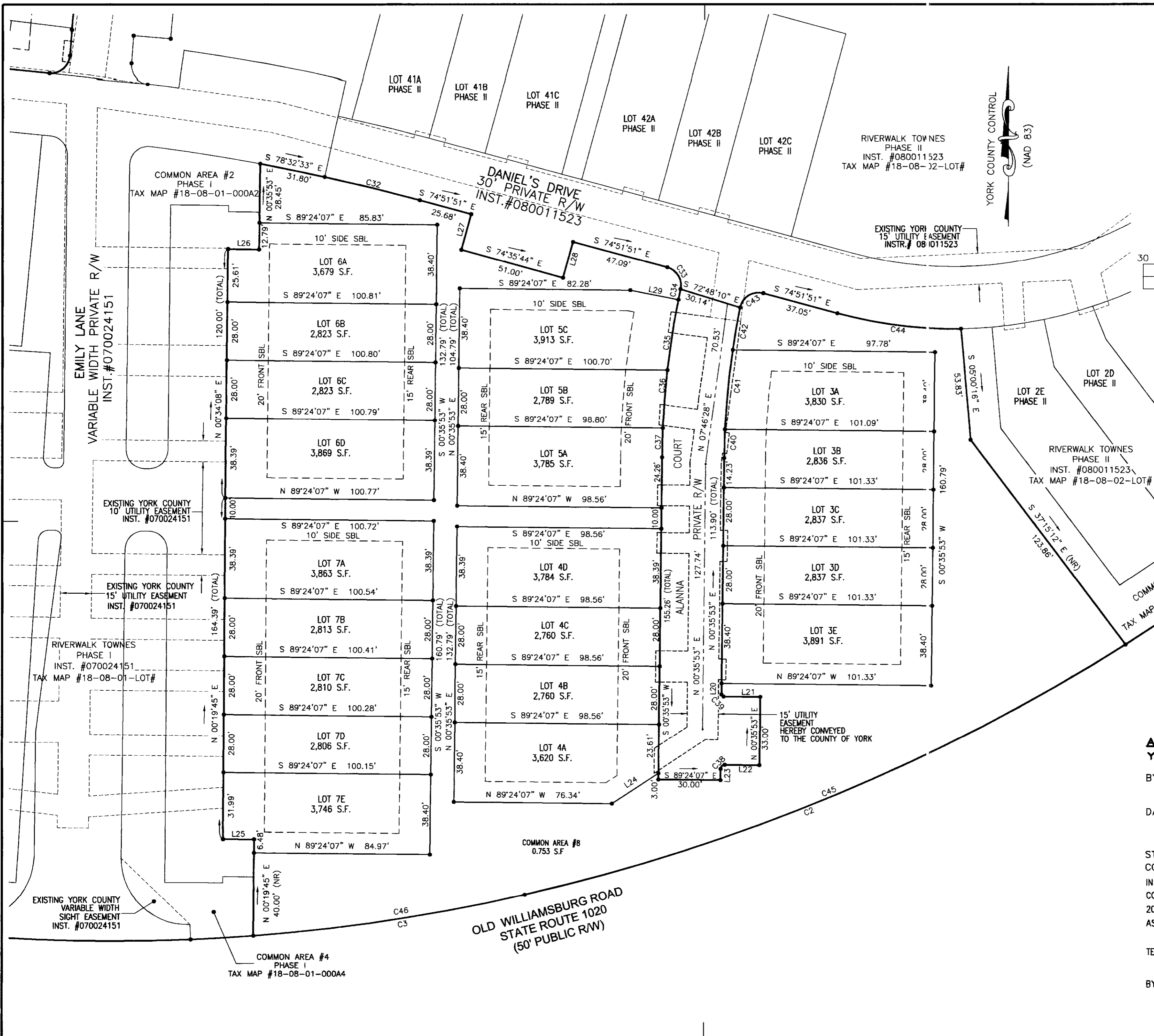
APPROVED:
YORK COUNTY BOARD OF SUPERVISORS

BY: *Al Maddalena*
PLAT APPROVING AGENT

DATE: 1/28/09

STATE OF VIRGINIA
COUNTY OF YORK
IN THE CLERK'S OFFICE OF THE CIRCUIT COURT FOR THE COUNTY OF YORK-POQUOSON THE 28th DAY OF January 2009. THIS PLAT WAS PRESENTED AND ADMITTED TO RECORD AS THE LAW DIRECTS AS INSTRUMENT NO. 090001542

TESTE: *Lynn S. Mendibur*
CLERK
BY: *Julia Brogden, D.C.*



YORK COUNTY CONTROL
(NAD 83)

RIVERWALK TOWNES
PHASE II
INST. #080011523
TAX MAP #18-08-02-LOT#

EXISTING YORK COUNTY
15' UTILITY EASEMENT
INSTR. # 081011523

DANIEL'S DRIVE
30' PRIVATE R/W
INST. #080011523

COURT

ALANNA

15' UTILITY
EASEMENT
HEREBY CONVEYED
TO THE COUNTY OF YORK

OLD WILLIAMSBURG ROAD
STATE ROUTE 1020
(50' PUBLIC RW)

COMMON AREA #2
PHASE I
TAX MAP #18-08-01-000A2

EMILY LANE
VARIABLE WIDTH PRIVATE R/W
INST. #070024151

EXISTING YORK COUNTY
10' UTILITY EASEMENT
INST. #070024151

EXISTING YORK COUNTY
15' UTILITY EASEMENT
INST. #070024151

RIVERWALK TOWNES
PHASE I
INST. #070024151
TAX MAP #18-08-01-LOT#

EXISTING YORK COUNTY
VARIABLE WIDTH
SIGHT EASEMENT
INST. #070024151

COMMON AREA #4
PHASE I
TAX MAP #18-08-01-000A4