

LINE	BEARING	LENGTH
L13	N66°08'22"E	17.51'
L14	N72°04'04"E	113.25'
L15	N69°25'41"E	66.27'
L16	N68°06'37"E	141.42'
L17	N17°55'35"W	9.64'
L18	N72°39'19"E	4.73'
L19	N17°20'18"W	10.00'
L20	S72°39'19"W	221.24'
L21	S16°40'12"E	50.25'
L22	N72°39'42"E	10.00'
L23	N16°40'12"W	40.25'
L24	N72°39'19"E	196.62'
L25	S17°55'35"E	9.64'

CURVE	LENGTH	RADIUS	DELTA	TANGENT	CHORD BEARING	CHORD
C1	7.88	15.00	30°07'00"	4.04	S02°16'48"E	7.79
C2	28.94	58.77	28°12'52"	14.77	S03°14'15"E	28.65
C3	15.68	15.00	59°53'00"	8.64	S42°43'12"W	14.97
C4	23.56	15.00	90°00'00"	15.00	N27°39'42"E	21.21
C5	23.56	15.00	90°00'00"	15.00	N62°20'18"W	21.21

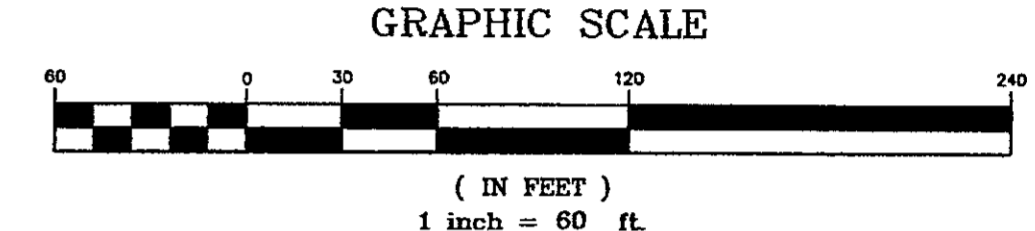
LOT 1	LOT 2 EXISTING YORK COUNTY 10' WATERLINE EASEMENT P.B. 9 PG. 251	LOT 3	LOT 4	LOT 5	LOT 6	LOT 7	LOT 8
LOT 1A	LOT 2A	LOT 3A	LOT 4A S17°20'18"E	LOT 5A 546.00'	LOT 6A	LOT 7A	LOT 8A

HARWOOD MILL
BLK-B SEC-A
P.B. 5 PG. 228
TAX MAP #30L-01-000B-LOT#
ZONED R20

BOUNDARY LINE ADJUSTMENT BETWEEN THE PROPERTIES OF YORKTOWN PARTNERSHIP, LLC

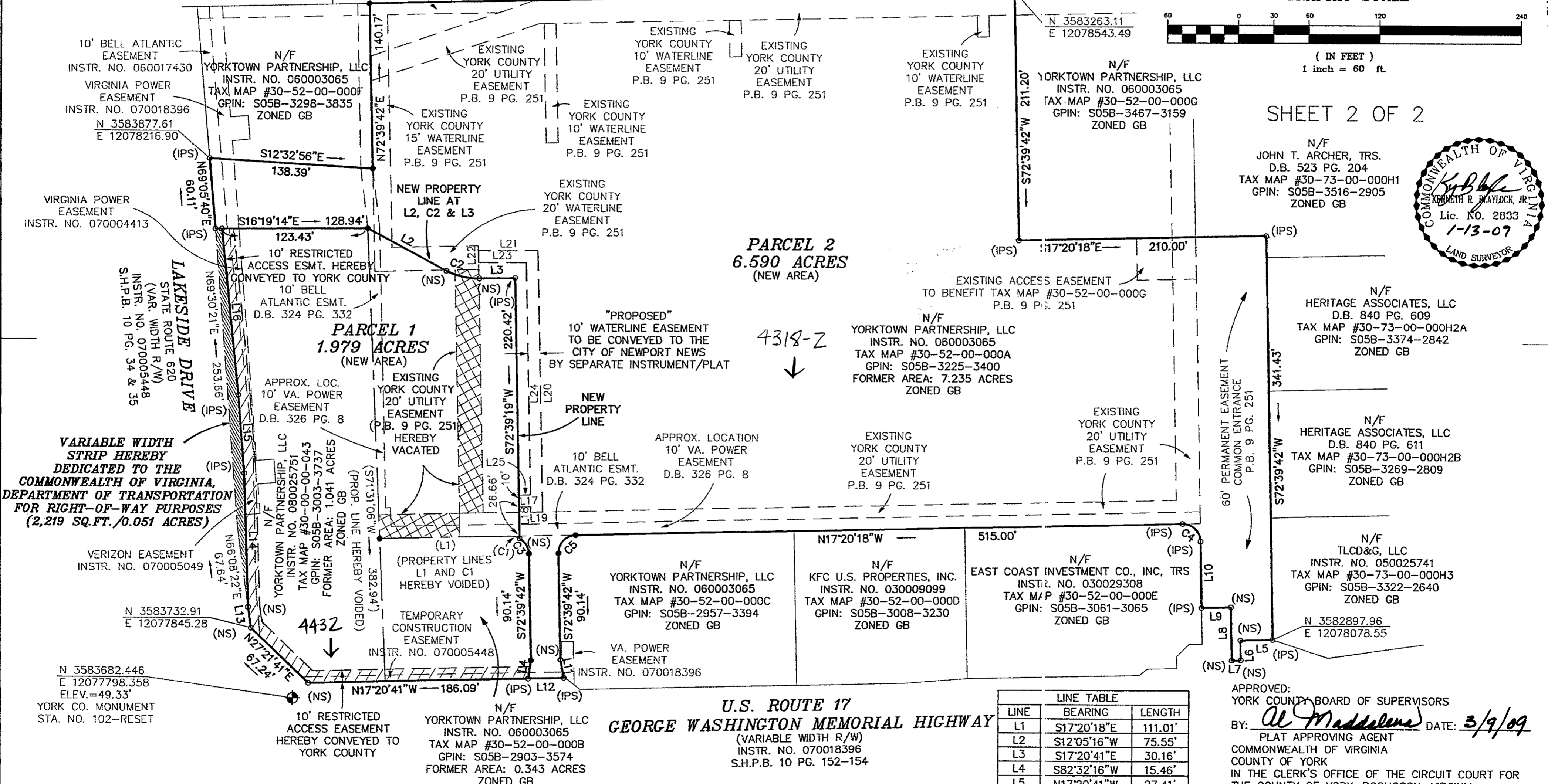
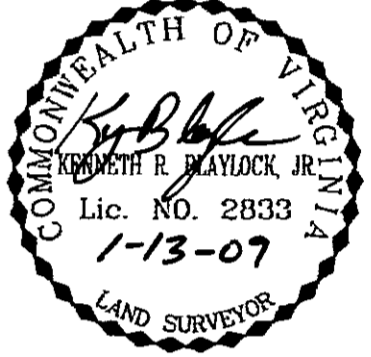
GRAFTON DISTRICT * YORK COUNTY, VA
DATE: JANUARY 13, 2009 SCALE: 1" = 60'

JENNINGSTEPHENSON P.C. 10160 STAPLES MILL ROAD SUITE 103 GLEN ALLEN, VA 23060
LAND SURVEYORS & PLANNERS
PHONE - 804-545-6235 FAX - 804-545-6259 J.N. 08-522



SHEET 2 OF 2

N/F JOHN T. ARCHER, TRS. D.B. 523 PG. 204 TAX MAP #30-73-00-000H1 GPIN: S05B-3516-2905 ZONED GB
N/F HERITAGE ASSOCIATES, LLC D.B. 840 PG. 609 TAX MAP #30-73-00-000H2A GPIN: S05B-3374-2842 ZONED GB
N/F HERITAGE ASSOCIATES, LLC D.B. 840 PG. 611 TAX MAP #30-73-00-000H2B GPIN: S05B-3269-2809 ZONED GB
N/F TLCD&G, LLC INSTR. NO. 050025741 TAX MAP #30-73-00-000H3 GPIN: S05B-3322-2640 ZONED GB



LINE	BEARING	LENGTH
L1	S17°20'18"E	111.01'
L2	S12°05'16"W	75.55'
L3	S17°20'41"E	30.16'
L4	S82°32'16"W	15.46'
L5	N17°20'41"W	27.41'
L6	S72°39'19"W	16.72'
L7	N17°20'41"W	7.67'
L8	N72°39'19"E	44.88'
L9	N17°20'41"W	24.91'
L10	N72°39'42"E	56.10'
L11	S62°48'22"W	15.46'
L12	N17°20'41"W	30.30'

APPROVED: YORK COUNTY BOARD OF SUPERVISORS
BY: Al Maddalena DATE: 3/9/09
PLAT APPROVING AGENT
COMMONWEALTH OF VIRGINIA
COUNTY OF YORK
IN THE CLERK'S OFFICE OF THE CIRCUIT COURT FOR THE COUNTY OF YORK-POQUOSON, VIRGINIA
THE 10th DAY OF March, 2009
THIS PLAT WAS PRESENTED AND ADMITTED TO RECORD AS THE LAW DIRECTS AS INSTRUMENT NO. 090004201 12:33pm
TESTE: Lynn S. Mendibur CLERK
BY: Jusa Brogden, D.C.

- AREA OF VARIABLE WIDTH STRIP HEREBY DEDICATED TO THE COMMONWEALTH OF VIRGINIA, DEPARTMENT OF TRANSPORTATION FOR RIGHT-OF-WAY PURPOSES (2,219 SQ. FT./0.051 ACRES)
- AREA OF EXISTING YORK COUNTY 20' UTILITY EASEMENT (P.B. 9 PG. 251) HEREBY VACATED
- AREA OF 10' RESTRICTED ACCESS EASEMENT HEREBY CONVEYED TO YORK COUNTY

- DENOTES IRON PIN, PIPE OR NAIL FOUND
- DENOTES IRON PIN OR NAIL SET
- (IPS) DENOTES IRON PIN SET
- (NS) DENOTES NAIL SET

2009 MAR 10 PM 12:33