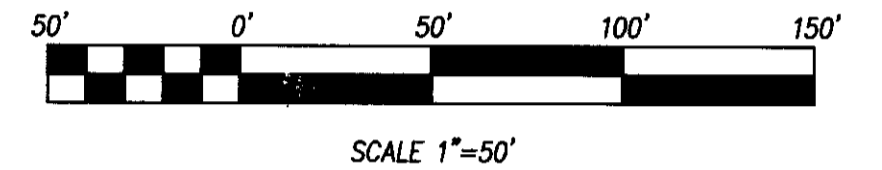


SUBDIVISION OF PROPERTY OF JAGE DEVELOPMENT, L.C. & LAUREOLA ONE, LLC

BRUTON DISTRICT, YORK COUNTY, VIRGINIA
OCTOBER 5, 2008 SCALE 1"=50'

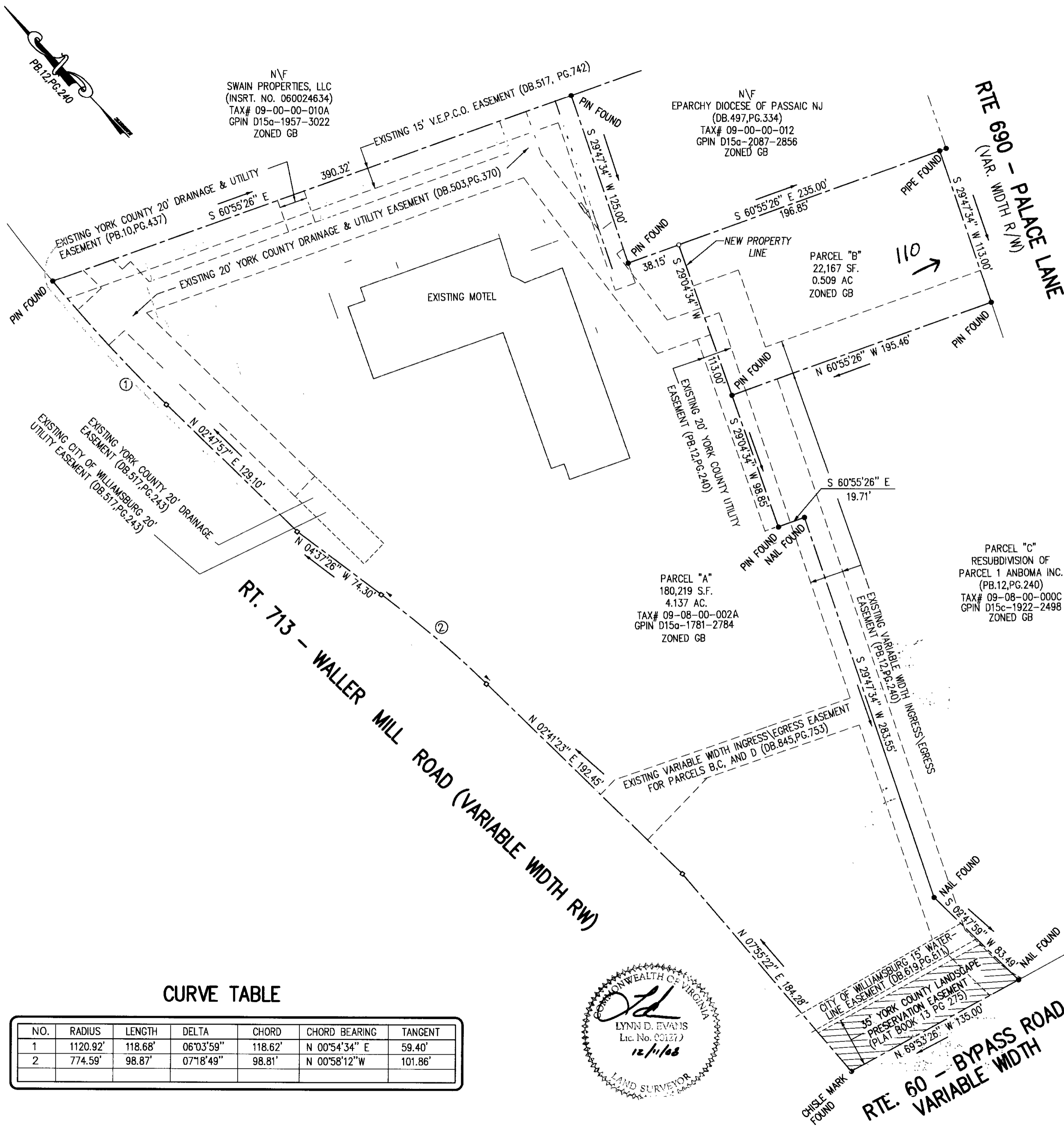
SHEET 3 OF 3

Bury+Partners
ENGINEERING SOLUTIONS
4095 Ironbound Road, Suite 200
Williamsburg, Virginia 23188
Tel. (757) 229-1776 Fax (757) 229-4683
Bury+Partners, Inc. Copyright 2006
REV. DEC. 8, 2008



LEGEND

- EXISTING CONDITIONS
- CONCRETE MONUMENT
 - PIN FOUND
 - PIN SET
- SETBACKS
- FRONT 45'
 - SIDE 10'
 - REAR 10'



CURVE TABLE

NO.	RADIUS	LENGTH	DELTA	CHORD	CHORD BEARING	TANGENT
1	1120.92'	118.68'	06°03'59"	118.62'	N 00°54'34" E	59.40'
2	774.59'	98.87'	07°18'49"	98.81'	N 00°58'12" W	101.86'



APPROVED: YORK COUNTY BOARD OF SUPERVISORS
 BY: Al Maddalena DATE: 3/16/09
 PLAT APPROVING AGENT

STATE OF VIRGINIA
 COUNTY OF YORK
 IN THE CLERK'S OFFICE OF THE CIRCUIT COURT FOR THE COUNTY OF YORK
 THIS 17th DAY OF MARCH, 2009, THIS MAP WAS PRESENTED AND
 ADMITTED TO RECORD AS THE LAW DIRECTS AS INSTRUMENT NO. LR090004830
 TESTE: LYNN S. MENDIBUR 2:48p.m.
 CLERK
 BY: Valerie J. Baldwin D.C.