

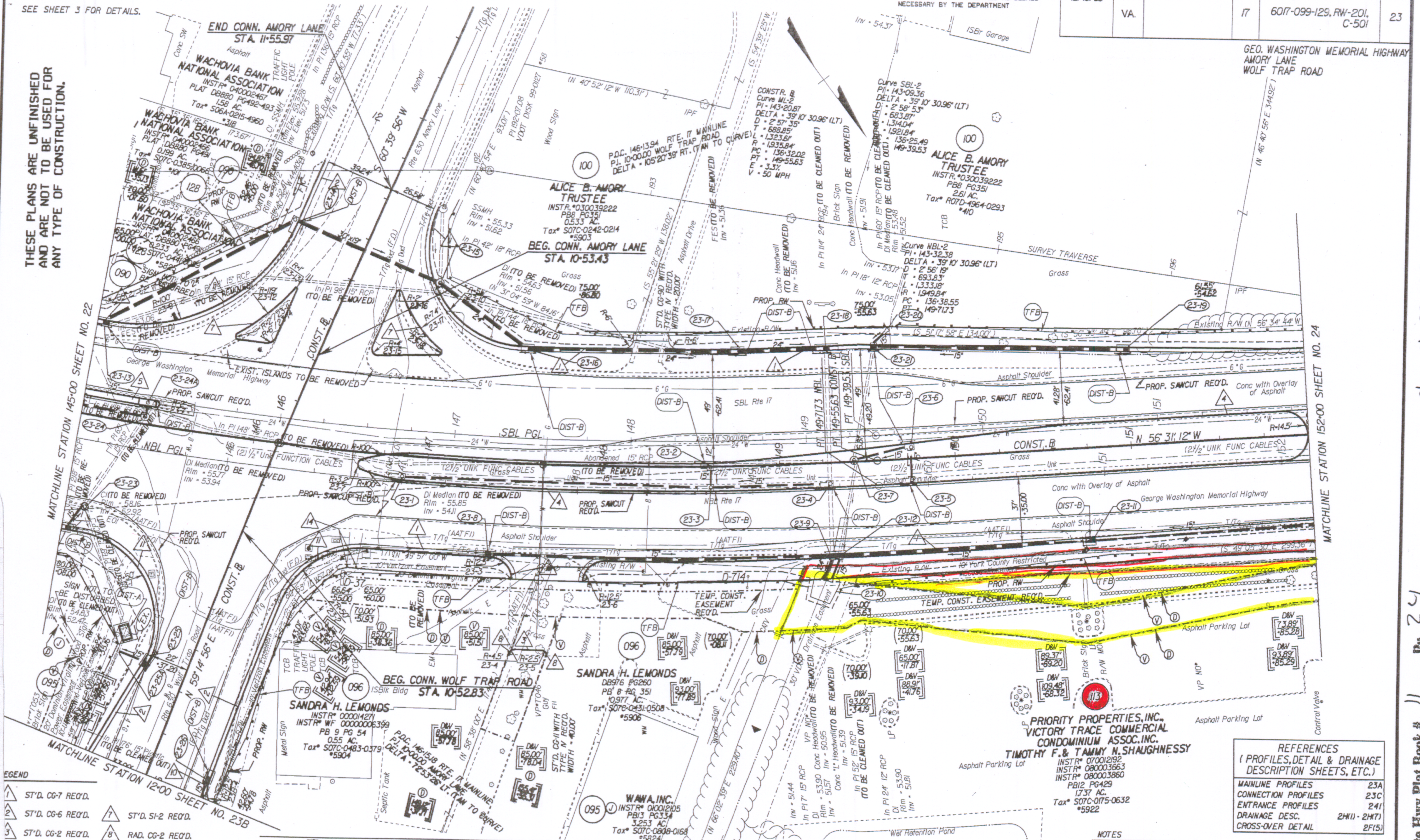
SURVEYED BY BULL HARMON 1/5/01 253-5317
SUPERVISED BY J.K. HANNA, P.E. (757) 925-2406
DESIGNED BY K.D. MCKINNA, P.E. (757) 925-3622
HAMPTON ROADS DISTRICT DESIGN UNIT

UTILITY OWNERS:
SEE SHEET 3 FOR DETAILS.

THESE PLANS ARE UNFINISHED
AND ARE NOT TO BE USED FOR
ANY TYPE OF CONSTRUCTION.

DESIGN FEATURES RELATING TO CONSTRUCTION
OR TO REGULATION AND CONTROL OF TRAFFIC
MAY BE SUBJECT TO CHANGE AS DEEMED
NECESSARY BY THE DEPARTMENT

REVISED	STATE	FEDERAL AID	ROUTE	PROJECT	SHEET NO.
03/23/06 05/29/07 12/16/08	VA.		17	6017-099-129, RW-201, C-501	23



LEGEND

1	ST'D. CG-7 REQ'D.	7	ST'D. SI-2 REQ'D.
2	ST'D. CG-6 REQ'D.	8	RAD. CG-2 REQ'D.
3	ST'D. CG-2 REQ'D.	9	ST'D. MS-2 REQ'D.
4	ST'D. MS-2 REQ'D.	10	RAD. CG-6 REQ'D.
5	ST'D. MS-1A REQ'D.	11	RAD. CG-7 REQ'D.

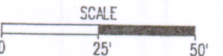
C	Denotes Construction Limits In Cuts	V	Denotes variable easement required for Verizon Virginia	z	Denotes Additional Utility Easement Required For Parcel 128	00' 00'	Figures without parenthesis or brackets and solid lines denote Proposed Right of Way.
F	Denotes Construction Limits In Fills	D	Denotes variable easement required for Dominion Virginia Power	○	Denotes Drainage Structure Number	00' 00'	Figures in brackets and dot-dashed lines denote Permanent Easements.
PGL	Denotes Profile Grade Line					00' 00'	Figures in double brackets and dot-dashed lines denote Permanent Utility Easements.

REFERENCES
(PROFILES, DETAIL & DRAINAGE DESCRIPTION SHEETS, ETC.)

MAINLINE PROFILES	23A
CONNECTION PROFILES	23C
ENTRANCE PROFILES	241
DRAINAGE DESC.	2H(1) - 2H(7)
CROSS-OVER DETAIL	2F(5)

NOTES
See General Notes for E&S Legend

PLAN NO.	PROJECT	FILE NO.	SHEET NO.
	6017-099-129		23



MATCHLINE STATION 145+00 SHEET NO. 22

MATCHLINE STATION 152+00 SHEET NO. 24

Doc # 090006148

State Hwy Plat Book # 11 Pt 24