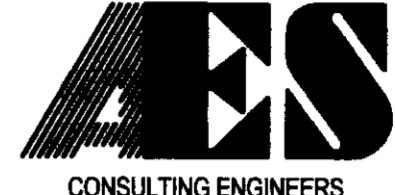


**BOUNDARY LINE ADJUSTMENT
BETWEEN PROPERTIES OWNED BY
TIM D. MCCULLOCH AND SHERRY V. MCCULLOCH**

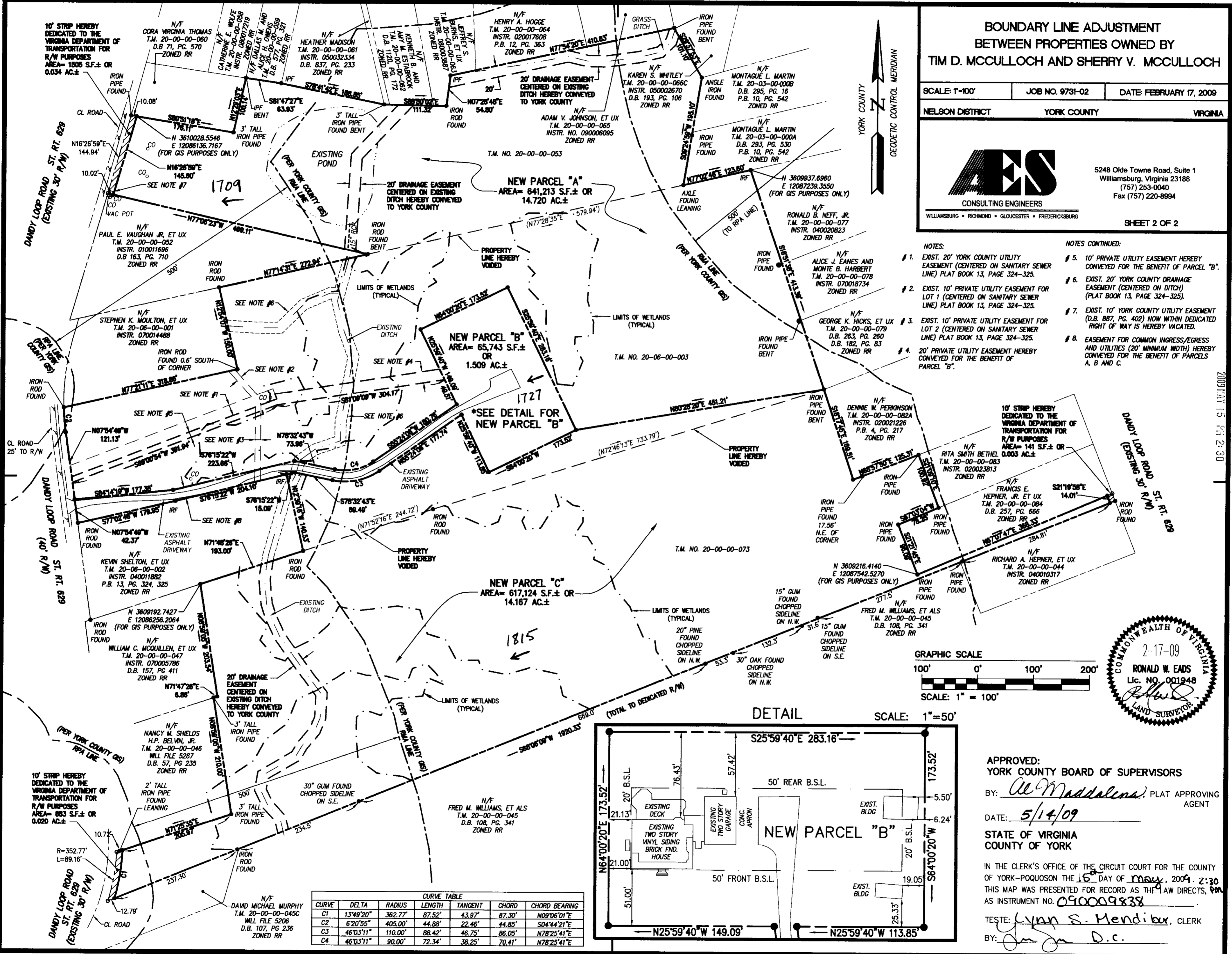
SCALE: 1"=100' JOB NO. 9731-02 DATE: FEBRUARY 17, 2009

NELSON DISTRICT YORK COUNTY VIRGINIA

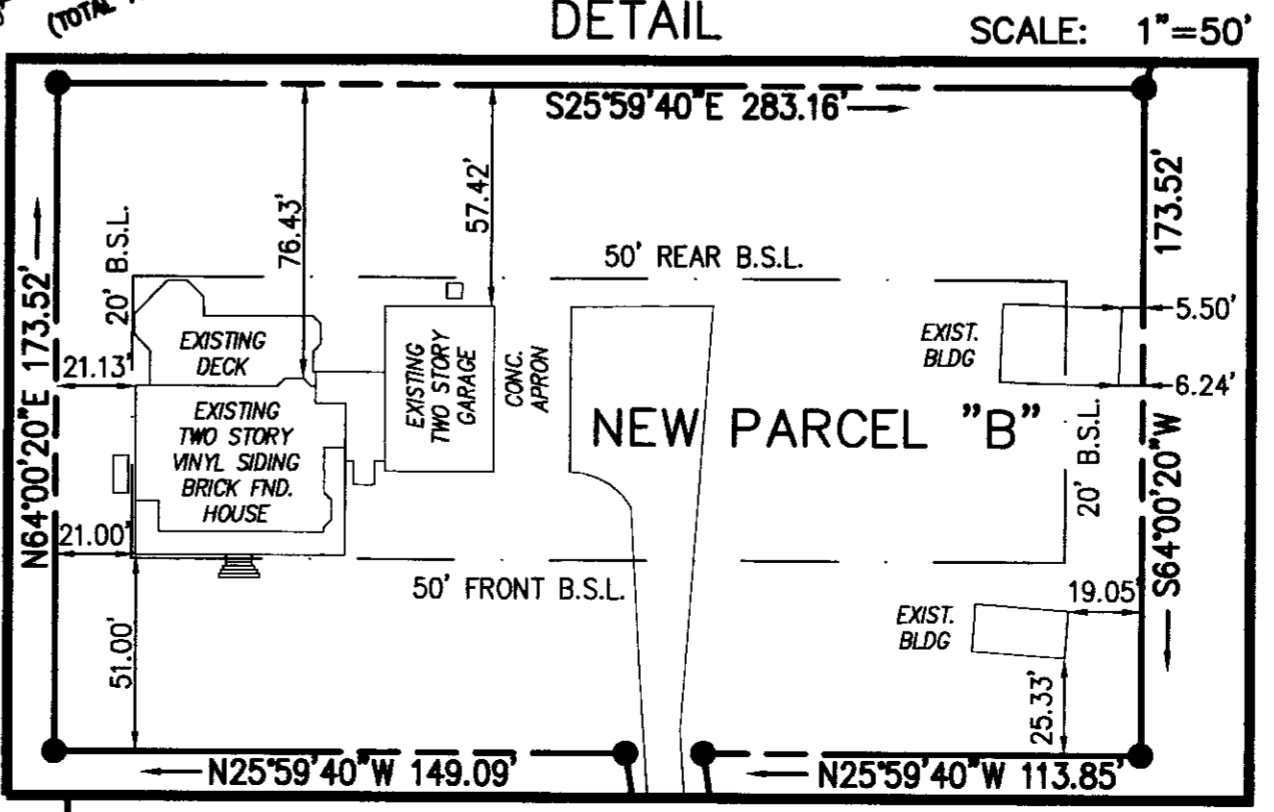
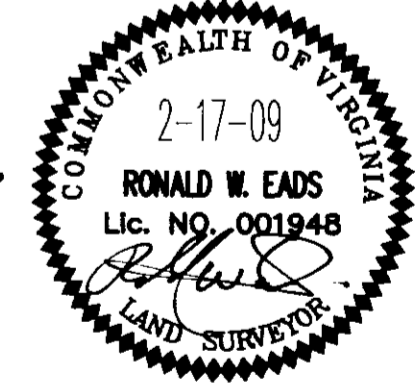
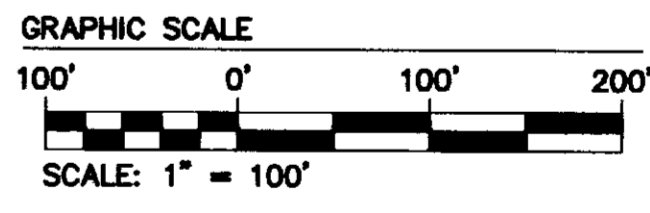


5248 Olde Towne Road, Suite 1
Williamsburg, Virginia 23188
(757) 253-0040
Fax (757) 220-8994

SHEET 2 OF 2



- NOTES:**
- # 1. EXIST. 20' YORK COUNTY UTILITY EASEMENT (CENTERED ON SANITARY SEWER LINE) PLAT BOOK 13, PAGE 324-325.
 - # 2. EXIST. 10' PRIVATE UTILITY EASEMENT FOR LOT 1 (CENTERED ON SANITARY SEWER LINE) PLAT BOOK 13, PAGE 324-325.
 - # 3. EXIST. 10' PRIVATE UTILITY EASEMENT FOR LOT 2 (CENTERED ON SANITARY SEWER LINE) PLAT BOOK 13, PAGE 324-325.
 - # 4. 20' PRIVATE UTILITY EASEMENT HEREBY CONVEYED FOR THE BENEFIT OF PARCEL "B".
- NOTES CONTINUED:**
- # 5. 10' PRIVATE UTILITY EASEMENT HEREBY CONVEYED FOR THE BENEFIT OF PARCEL "B".
 - # 6. EXIST. 20' YORK COUNTY DRAINAGE EASEMENT (CENTERED ON DITCH) (PLAT BOOK 13, PAGE 324-325).
 - # 7. EXIST. 10' YORK COUNTY UTILITY EASEMENT (D.B. 887, PG. 402) NOW WITHIN DEDICATED RIGHT OF WAY IS HEREBY VACATED.
 - # 8. EASEMENT FOR COMMON INGRESS/EGRESS AND UTILITIES (20' MINIMUM WIDTH) HEREBY CONVEYED FOR THE BENEFIT OF PARCELS A, B AND C.



APPROVED:
YORK COUNTY BOARD OF SUPERVISORS

BY: *Al Maddalena* PLAT APPROVING AGENT

DATE: 5/14/09

STATE OF VIRGINIA
COUNTY OF YORK

IN THE CLERK'S OFFICE OF THE CIRCUIT COURT FOR THE COUNTY OF YORK-POQUOSON THE 16 DAY OF May, 2009. 2:30
THIS MAP WAS PRESENTED FOR RECORD AS THE LAW DIRECTS, PM
AS INSTRUMENT NO. 090009838

TESTE: Lynn S. Mendibux, CLERK

BY: *Tim D. McCulloch*

CURVE TABLE						
CURVE	DELTA	RADIUS	LENGTH	TANGENT	CHORD	CHORD BEARING
C1	137°49'20"	362.77'	87.52'	43.97'	87.30'	N09°06'01"E
C2	62°03'55"	405.00'	44.88'	22.46'	44.85'	S04°44'21"E
C3	46°03'11"	110.00'	88.42'	46.75'	86.05'	N78°25'41"E
C4	46°03'11"	90.00'	72.34'	38.25'	70.41'	N78°25'41"E

S:\Jobs\973102-McCulloch\Property\dwg\Svg\Plats\Recorded\Plats\973104_BLA_SUBD.dwg, 4/30/2009 9:37:12 AM, Plotter HP 500 Mylar.pc3