

VICINITY MAP

1"=2000'

ADC PERMITTED USE NO. 20605142

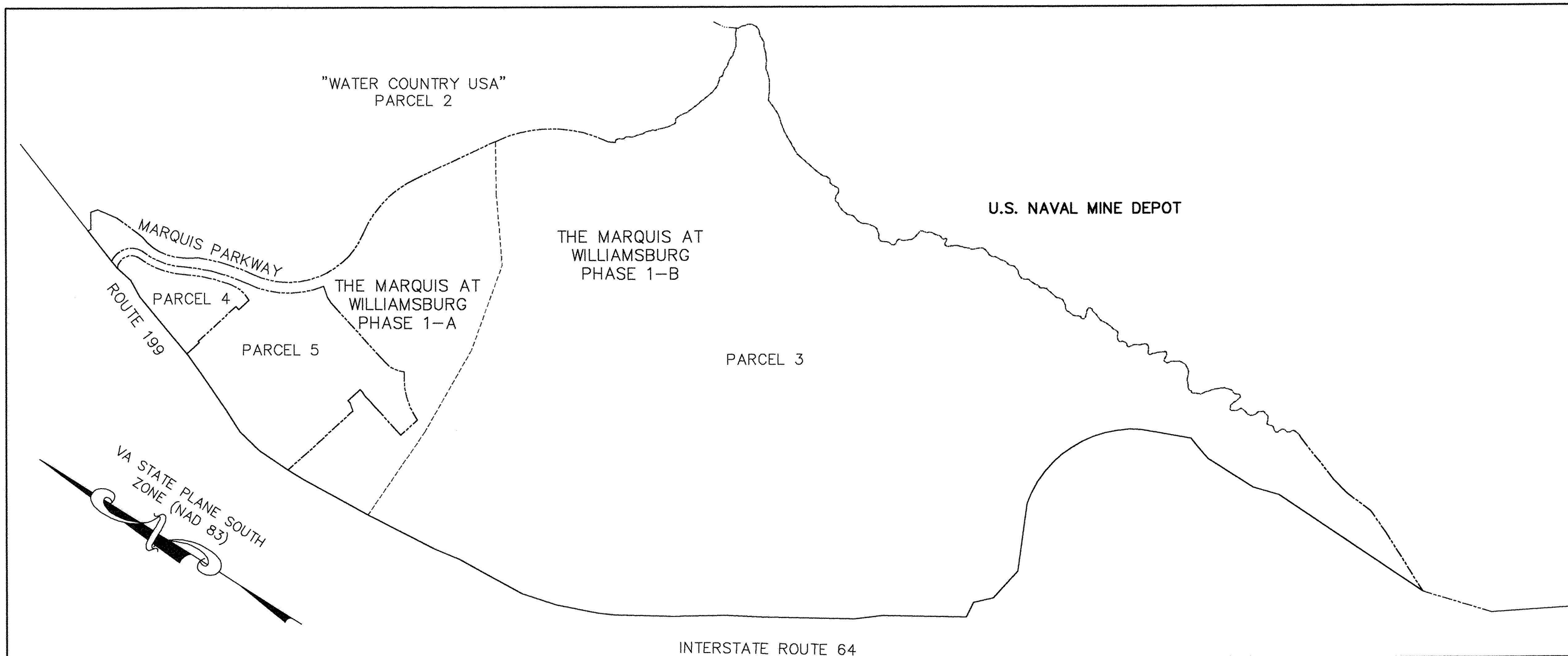
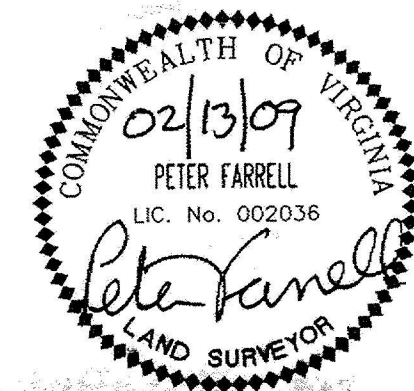
- NOTES:
1. THE RECORDATION OF THIS PLAT SHALL OPERATE TO TRANSFER TO THE COUNTY OF YORK ANY EASEMENT INDICATED ON THE PLAT FOR DRAINAGE AND/OR UTILITIES TO CREATE A PUBLIC RIGHT-OF-PASSAGE OVER THE SAME, UNLESS OTHERWISE NOTED ON THIS PLAT.
 2. DRAINAGE AND UTILITY EASEMENTS CONVEYED TO THE COUNTY BY RECORDATION OF THIS PLAT SHALL BE EXCLUSIVE TO THE COUNTY, UNLESS OTHERWISE NOTED. CONVEYANCE OF SUCH EASEMENTS TO THE COUNTY ALSO INCLUDE: (i) THE COUNTY'S RIGHT OF INGRESS AND EGRESS OVER THE OWNER'S LAND ADJACENT TO THE EASEMENT AS NECESSARY TO INSPECT, MAINTAIN AND OPERATE THE COUNTY'S FACILITIES WITHIN THE EASEMENT AND (ii) THE RIGHT OF THE COUNTY TO ASSIGN TO OTHERS, FROM TIME TO TIME, THE RIGHT TO LOCATE FACILITIES THEREIN SERVING THE PUBLIC, INCLUDING, BUT NOT LIMITED TO, WATER, ELECTRIC, TELEPHONE, COMMUNICATIONS, AND GAS UTILITY FACILITIES.
 3. LOCATION OF PROPOSED 20' UTILITY EASEMENT IS BASED ON AN ACTUAL FIELD LOCATION OF SANITARY SEWER MANHOLES. LOCATION OF PROPOSED 20' DRAINAGE EASEMENT IS BASED ON AN ACTUAL FIELD LOCATION OF SURFACE STORM SEWER STRUCTURES.

PLAT SHOWING UTILITY EASEMENT
AND DRAINAGE EASEMENT
PARCEL 5
THE MARQUIS AT WILLIAMSBURG
BRUTON DISTRICT, YORK COUNTY, VIRGINIA
TO BE CONVEYED TO
THE COUNTY OF YORK
BY
TARGET CORPORATION
DATE: 11/21/08 SCALE: 1"=500'
REVISED: 02/13/09

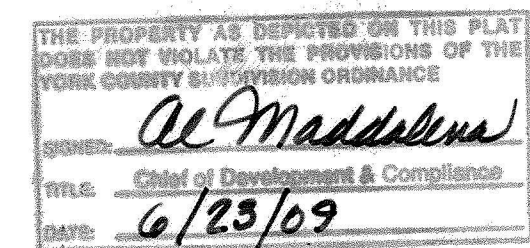
SHEET 1 OF 2

**LANDMARK
DESIGN GROUP**

Engineers • Planners • Surveyors
Landscape Architects • Environmental Consultants
4029 IRONBOUND ROAD SUITE 100
WILLIAMSBURG, VIRGINIA 23188
(757) 253-2975 FAX: (757) 229-0049



PROJECT AREA



APPROVED:
YORK COUNTY BOARD OF SUPERVISORS

BY: _____
PLAT APPROVING AGENT

DATE:

STATE OF VIRGINIA, COUNTY OF YORK
IN THE CLERK'S OFFICE OF THE CIRCUIT COURT FOR THE
COUNTY OF YORK-POQUOSON THE 24th DAY OF
June 2009, THIS MAP WAS PRESENTED AND
ADMITTED TO RECORD AS THE LAW DIRECTS AS
INSTRUMENT NO. 090012813

TESTE: Lynn S. Mendibur
CLERK

BY: Valerie R. Baldwin D.C.