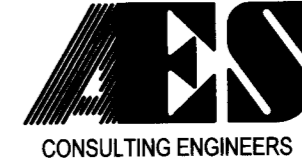


SUBDIVISION OF THE PROPERTY OF LAND'OR WILLIAMSBURG, L.L.C. (PUMP STATION LOT)

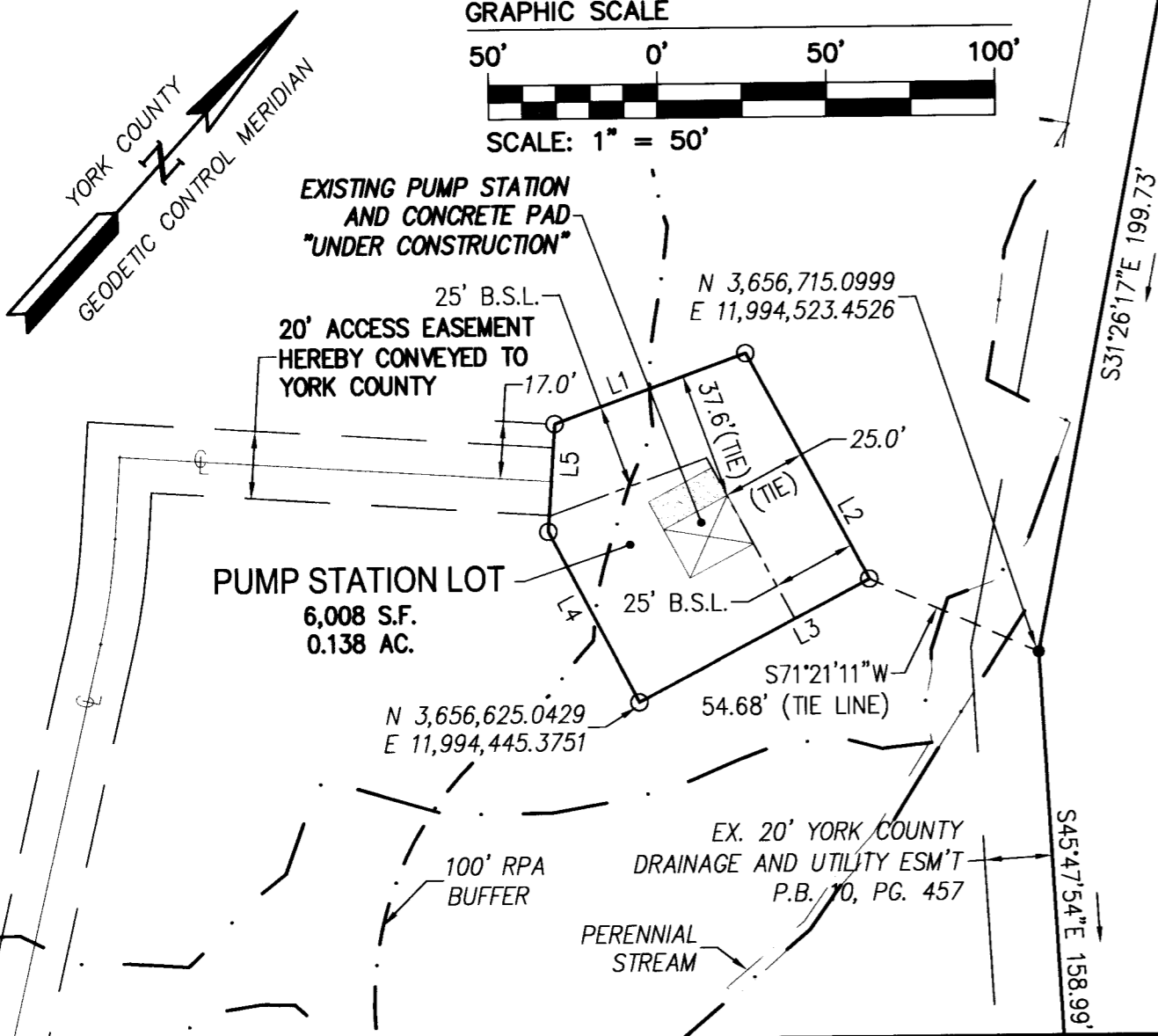
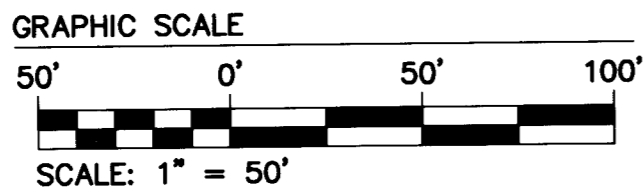
YORK COUNTY BRUTON DISTRICT VIRGINIA
 DATE: 12/7/07 SCALE: 1"=100' DRAWN: AWT



5248 Olde Towne Road, Suite 1
 Williamsburg, Virginia 23188
 (757) 253-0040
 Fax (757) 220-8994
 JOB NO. 8941-10

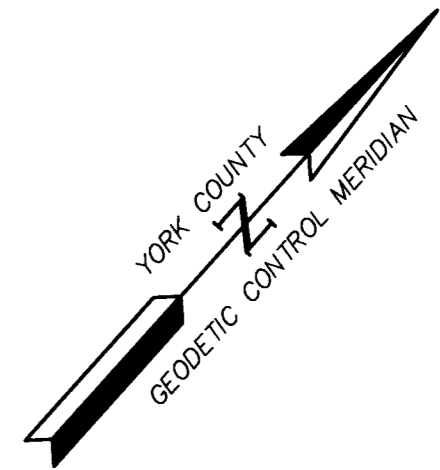
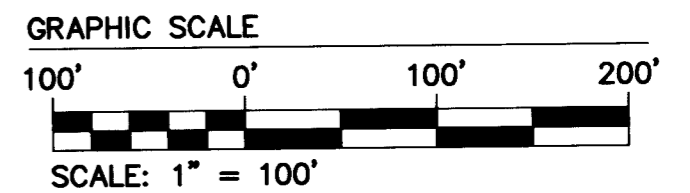
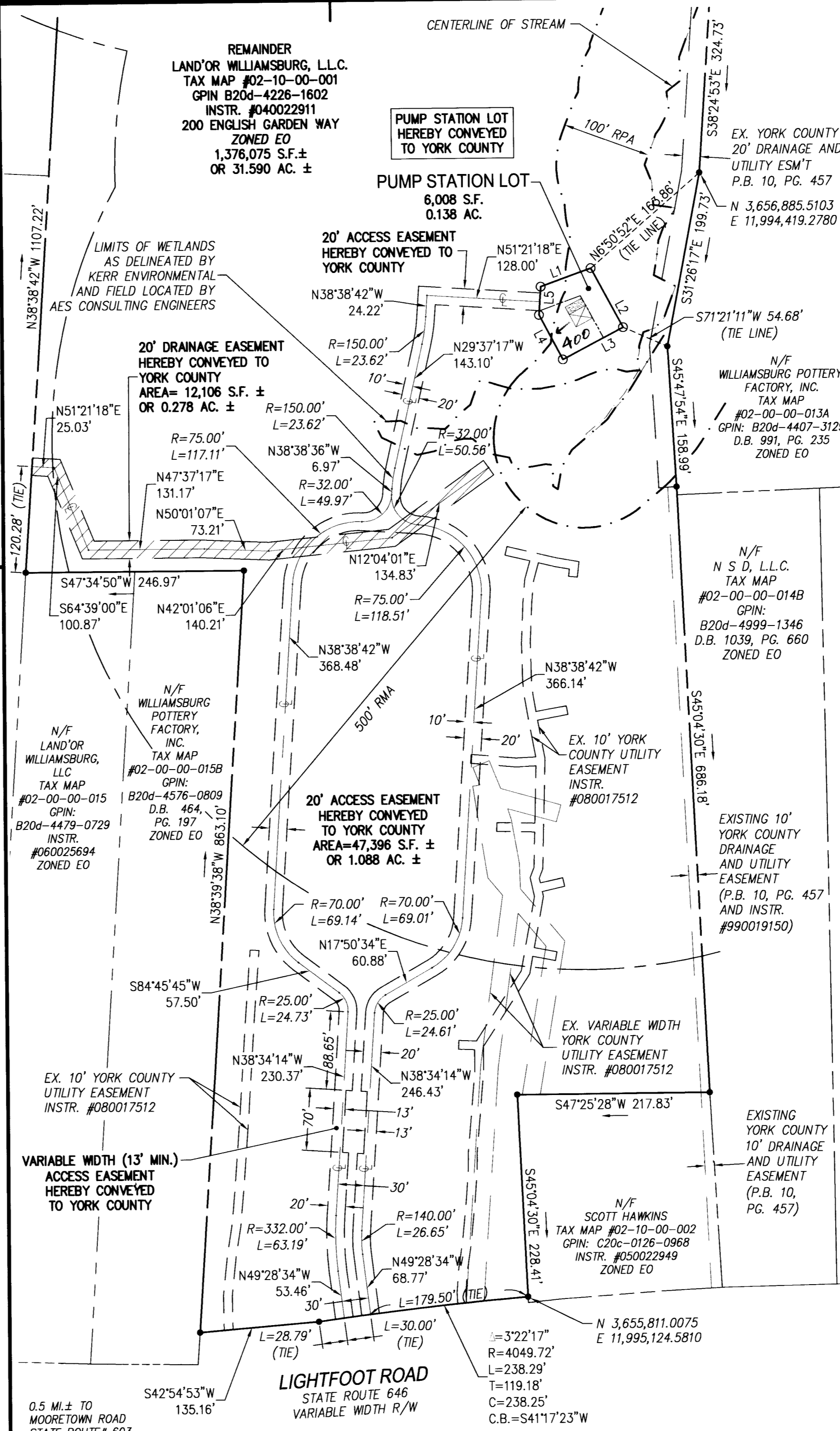
3	3/31/09	ADJUST EASEMENT TO AS-BUILT LOCATION	SDC
2	1/30/09	REVISED PER COMMENT LETTER	AWT
1	3/27/08	REVISED PER COMMENT LETTER	AWT
No.	DATE	REVISION / COMMENT / NOTE	BY

SHEET 2 OF 4 - PUMP STATION LOT & ACCESS EASEMENT



INSET SCALE: 1"= 50'

LINE	BEARING	LENGTH
L1	N27°47'22"E	60.28'
L2	S70°40'58"E	76.19'
L3	S19°53'59"W	77.18'
L4	N70°06'01"W	57.17'
L5	N38°38'42"W	32.00'



APPROVED: YORK COUNTY BOARD OF SUPERVISORS

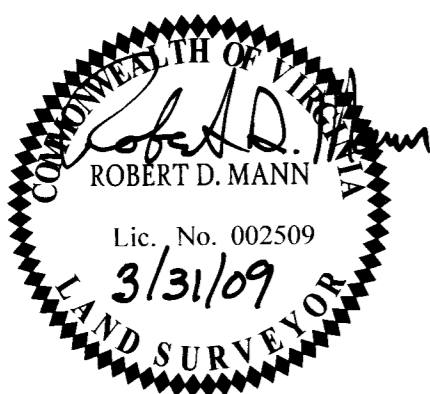
BY: Al Maddalena, PLAT APPROVING AGENT
 DATE: 8/6/09

STATE OF VIRGINIA
 COUNTY OF YORK

IN THE CLERK'S OFFICE OF THE CIRCUIT COURT FOR THE COUNTY OF YORK-POQUOSON THE 13th DAY OF Aug, 2009. THIS MAP WAS PRESENTED FOR RECORD AS THE LAW DIRECTS, AS INSTRUMENT NO. 090017404 2:47pm

TESTE: Lynn S. Mendibur, CLERK

BY: [Signature] D.C.



2009 AUG 13 PM 2:48