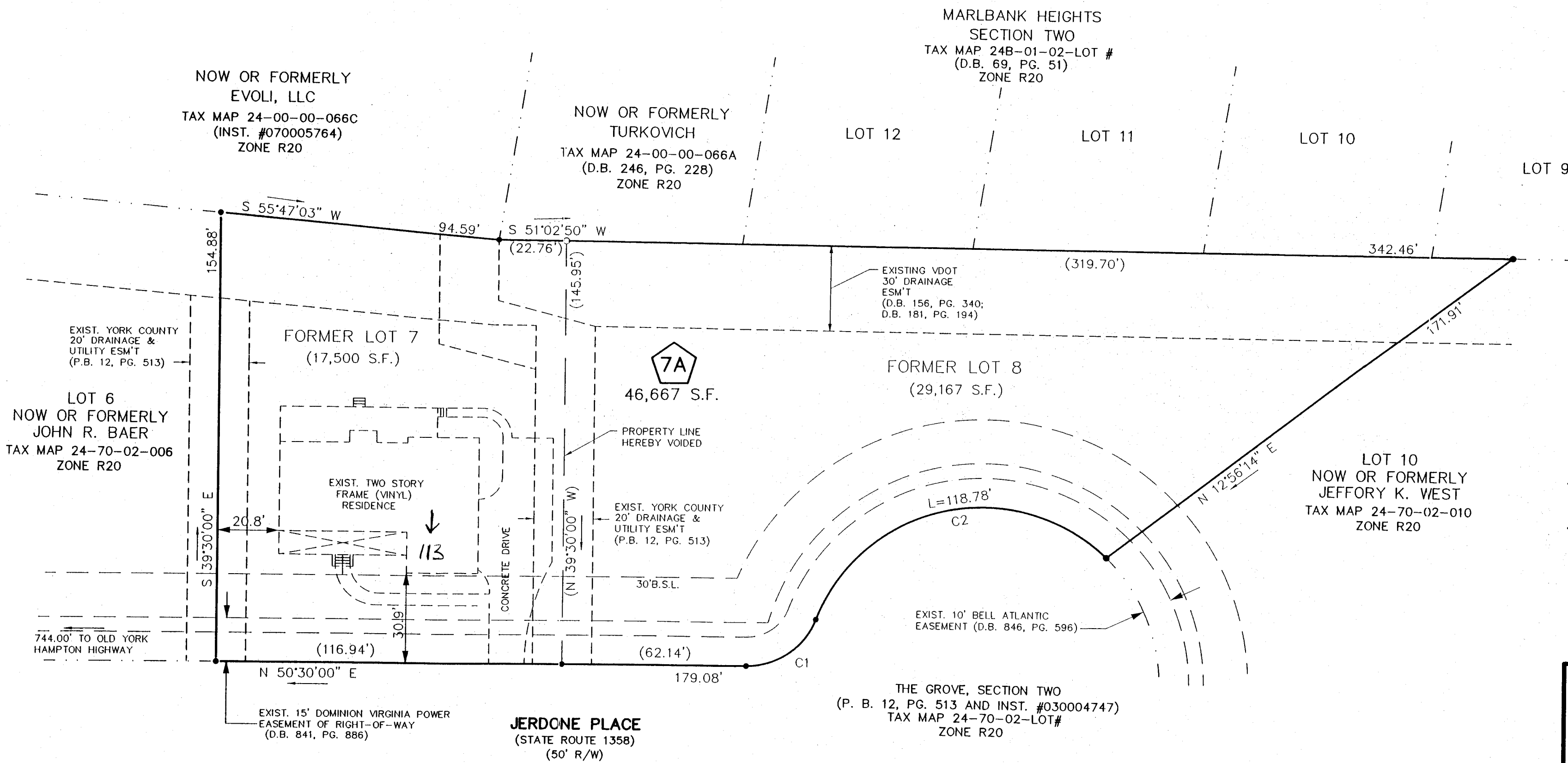


PLAT SHOWING
PROPERTY LINE VACATION
BETWEEN
**LOTS 7 AND 8
THE GROVE**
SECTION TWO
NELSON MAGISTERIAL DISTRICT
COUNTY OF YORK, VIRGINIA
SCALE : 1" = 30' DATE :25 MAY 2006
DAVIS & ASSOCIATES, P.C.
SURVEYORS - PLANNERS
3630 GEORGE WASHINGTON
MEMORIAL HIGHWAY - SUITE "G"
YORKTOWN, VIRGINIA 23693

Scale 1" = 30 ft
SHEET 2 OF 2



- SYMBOLS -

- DENOTES MINIMUM BUILDING SETBACK LINE
- DENOTES IRON PIPE FOUND
- DENOTES IRON PIPES TO BE SET AT ALL PROPERTY LINE JUNCTURES

2009 AUG 24 PM 2:45

APPROVED
YORK COUNTY BOARD OF SUPERVISORS

BY: *W. A. Addalua*
PLAT APPROVING AGENT

DATE: 8/25/09

STATE OF VIRGINIA
COUNTY OF YORK
IN THE CLERK'S OFFICE OF THE CIRCUIT
COURT FOR THE COUNTY OF YORK-POQUOSON
THE 25 DAY OF Aug, 2009, THIS MAP WAS
PRESENTED AND ADMITTED TO RECORD AS
THE LAW DIRECTS AS INSTRUMENT # 090015215
2:45 P.M.

TESTE: *Lynn S. Mendibur*
CLERK

BY: *[Signature]* P.C.

CURVE DATA TABLE						
NUMBER	DELTA ANGLE	RADIUS	ARC LENGTH	TANGENT	CHORD LENGTH	CHORD DIRECTION
C1	69°19'59"	25.00	30.25	17.29	28.44	S 15°50'01" W
C2	113°25'07"	60.00	118.78'	29.87	100.31	S 37°52'42" W