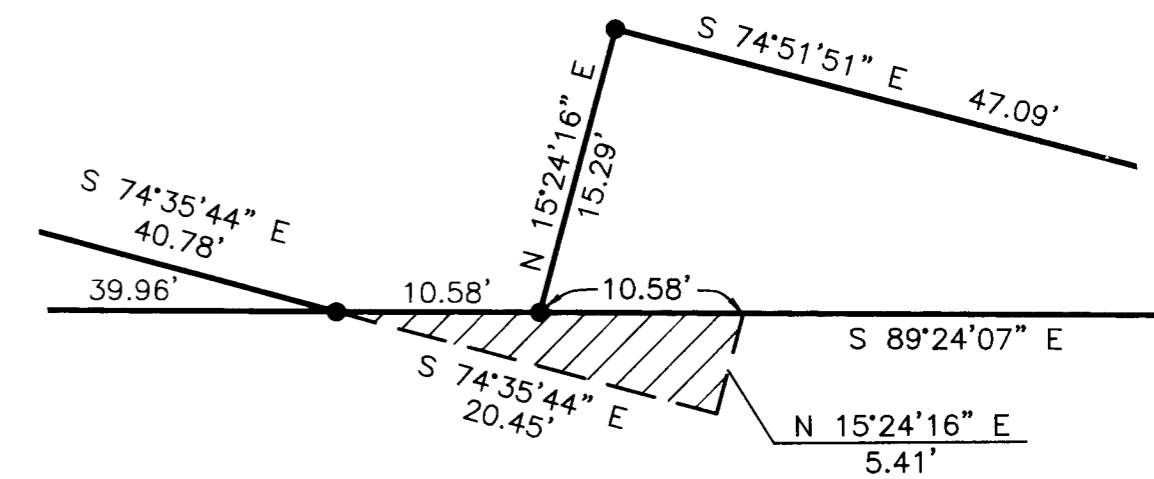
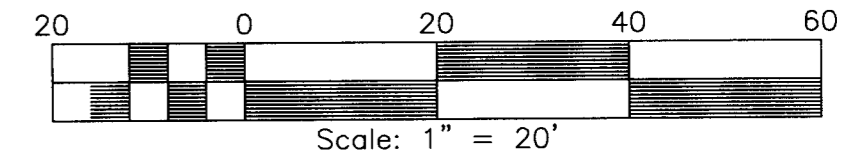


BOUNDARY LINE ADJUSTMENT BETWEEN
 LOT 5D & COMMON AREA #10
RIVERWALK TOWNES
 PHASE III RE-SUBDIVISION
 NELSON MAGISTERIAL DISTRICT
 YORK COUNTY, VIRGINIA

DATE: 09-14-09 SCALE: 1"=20' JOB #07-130
 REV: 10-14-09
 SHEET: 2 OF 2

LandTech
 Resources, Inc.
 Surveying · Engineering · GPS

205-E Bulifants Blvd., Williamsburg, VA 23188
 Phone: (757) 565-1677 Fax: (757) 565-0782
 web: landtechresources.com



EASEMENT DETAIL
 SCALE: 1"=10'

PARKING EASEMENT AREA HEREBY
 CONVEYED TO THE RIVERWALK
 TOWNES HOMEOWNERS ASSOCIATION

LEGEND

- PROPOSED EASEMENT
- VACATED PROPERTY LINE
- EXISTING EASEMENT
- BUILDING SETBACK LINE
- PROPERTY LINE
- =IRON ROD SET

APPROVED:
YORK COUNTY BOARD OF SUPERVISORS

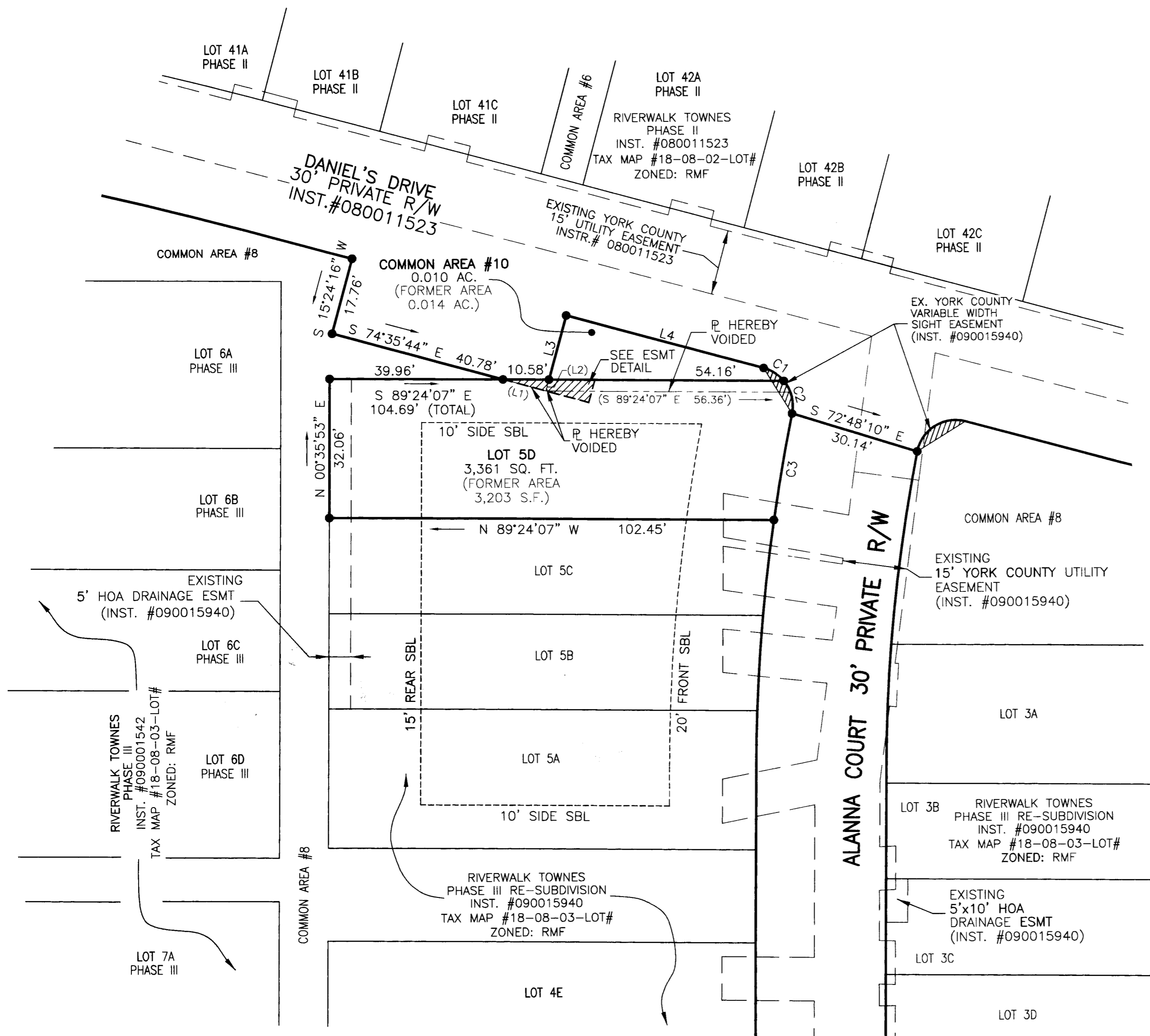
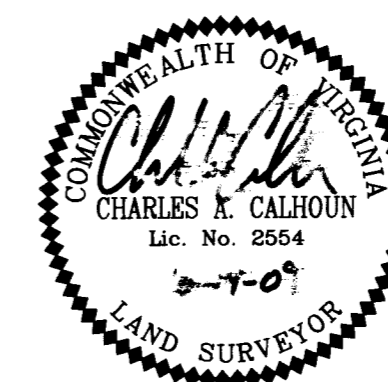
BY: *Al Maddalena*
 PLAT APPROVING AGENT

DATE: *11/2/09*

STATE OF VIRGINIA
 COUNTY OF YORK
 IN THE CLERK'S OFFICE OF THE CIRCUIT COURT FOR THE
 COUNTY OF YORK-POQUOSON THE *2nd* DAY OF *November*
 2009. THIS PLAT WAS PRESENTED AND ADMITTED TO RECORD
 AS THE LAW DIRECTS AS INSTRUMENT NO. *190024681*.

TESTE: *Kynn S. Mendibur*
 CLERK
 BY: *June Brogden, D.C.*

LANDTECH RESOURCES, INC.



2009 NOV -2 PH 1 of 2