

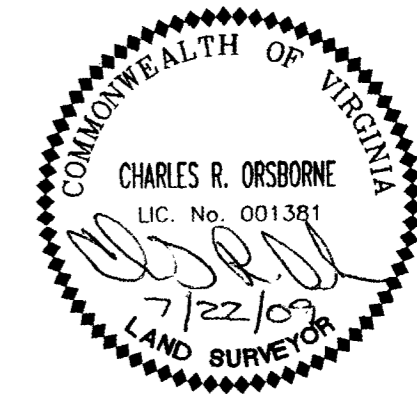
PLAT SHOWING SANITARY SEWER EASEMENT  
 AT  
 KINGS CREEK PLANTATION  
 PHASE 1 SPH SECTION 1  
 BRUTON DISTRICT  
 YORK COUNTY, VIRGINIA  
 TO BE CONVEYED TO  
 THE COUNTY OF YORK  
 BY  
 KINGS CREEK PLANTATION, L.L.C.

DATE: 07/22/2009 SCALE: 1"=200'

SHEET 2 OF 2

**LANDMARK  
 DESIGN GROUP**

Engineers • Planners • Surveyors  
 Landscape Architects • Environmental Consultants  
 4029 IRONBOUND ROAD SUITE 100  
 WILLIAMSBURG, VIRGINIA 23188  
 (757) 253-2975 FAX: (757) 229-0049



PROPERTY LINE

N/F  
 KINGSCREEK PLANTATION, L.L.C.  
 INST. NO. 020011940  
 TAX PARCEL 11-22-00-001C  
 GPIN# 114C-0769-1666

N/F  
 KINGSCREEK PLANTATION, L.L.C.  
 D.B. 1004 PG. 747  
 TAX PARCEL 11-20-00-000E  
 GPIN# H14D-4970-1708

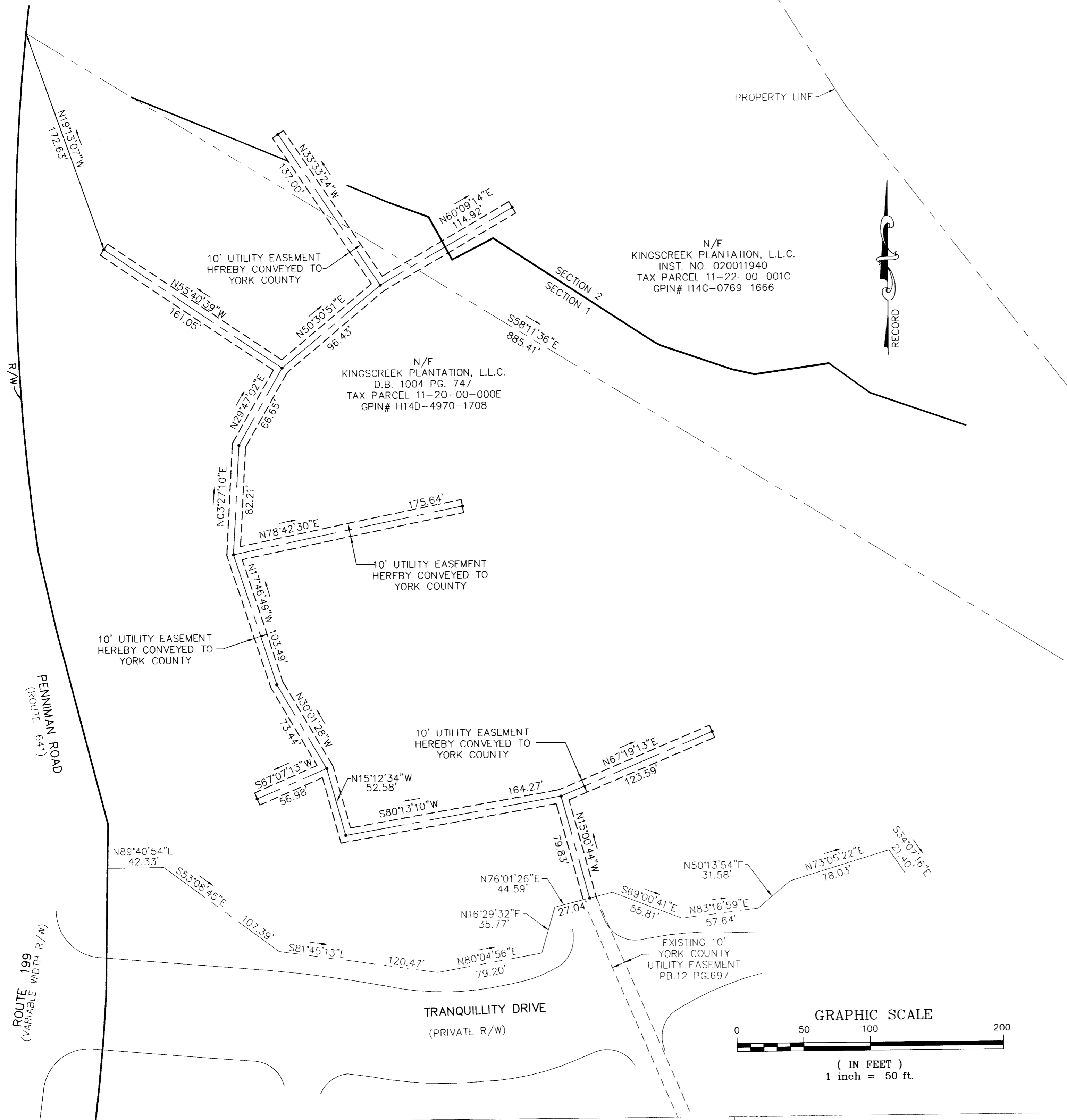
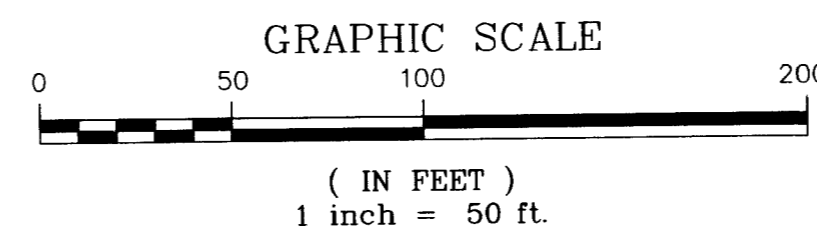
10' UTILITY EASEMENT  
HEREBY CONVEYED TO  
YORK COUNTY

10' UTILITY EASEMENT  
HEREBY CONVEYED TO  
YORK COUNTY

10' UTILITY EASEMENT  
HEREBY CONVEYED TO  
YORK COUNTY

10' UTILITY EASEMENT  
HEREBY CONVEYED TO  
YORK COUNTY

EXISTING 10'  
 YORK COUNTY  
 UTILITY EASEMENT  
 PB.12 PG.697



APPROVED:  
 YORK COUNTY BOARD OF SUPERVISORS

BY: *A. Maddalena*  
 PLAT APPROVING AGENT

DATE: 11/5/09

STATE OF VIRGINIA, COUNTY OF YORK  
 IN THE CLERK'S OFFICE OF THE CIRCUIT COURT FOR THE  
 COUNTY OF YORK-POQUOSON THE 19<sup>th</sup> DAY OF  
November 2009, THIS MAP WAS PRESENTED AND  
 ADMITTED TO RECORD AS THE LAW DIRECTS AS  
 INSTRUMENT NO. 09002630 2:34PM

TESTE: *Lynn S. Mendibur*  
 CLERK

BY: *Lance S. D.C.*