

N/F #000000192  
 COUNTY SCHOOL BOARD OF  
 YORK COUNTY, VIRGINIA  
 D.B. 191, PG. 566  
 D.B. 191, PG. 568 (PLAT)  
 GPIN : T04c-0243-0317  
 TAX MAP NO.  
 37-00-00-052  
 ZONED: RC

LOT 3  
 N/F  
 WOODIE G. & SHARON M. KENT  
 D.B. 502, PG. 824  
 GPIN : T03a-0335-4565  
 TAX MAP NO.  
 37-21-00-003  
 ZONED: RR

20' YORK CO. DRAIN.  
 & UTILITY EASEMENT  
 (P.B. 10, PG. 132)

40' YORK CO. DRAIN.  
 & UTILITY EASEMENT  
 (P.B. 10, PG. 132)

YORK COUNTY  
 APPROVED FOR RECORDATION  
 BY: *Al Maddala*  
 CHIEF OF DEVELOPMENT & COMPLIANCE  
 DATE: 11/23/09

IRS S 40°46'50" E 234.00' IPF

PROPERTY LINE  
 HEREBY VOIDED

40' YORK CO. DRAIN.  
 & UTILITY EASEMENT  
 (P.B. 10, PG. 132)

N/F  
 SANDRA FAYE  
 ALIFF HAWKINS  
 D.B. 393, PGS. 21-23  
 GPIN: S03b-4989-4490  
 TAX MAP NO.  
 37-00-00-055  
 ZONED: LB

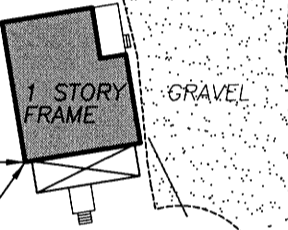
UPPERSHIRE  
 SUBDIVISION  
 (P.B. 10, PG. 132)

LOT 2  
 N/F  
 STEVEN J. & ANN F.  
 BRADY  
 INST. #010002693  
 GPIN : T03a-0169-4444  
 TAX MAP NO.  
 37-21-00-002  
 ZONED: RR

N/F  
 SANDRA FAYE  
 ALIFF HAWKINS  
 D.B. 393, PGS. 21-23  
 GPIN: S03b-4913-4581  
 TAX MAP NO.  
 37-00-00-054  
 ZONED: LB

(N 49°14'36" E  
 420.57')

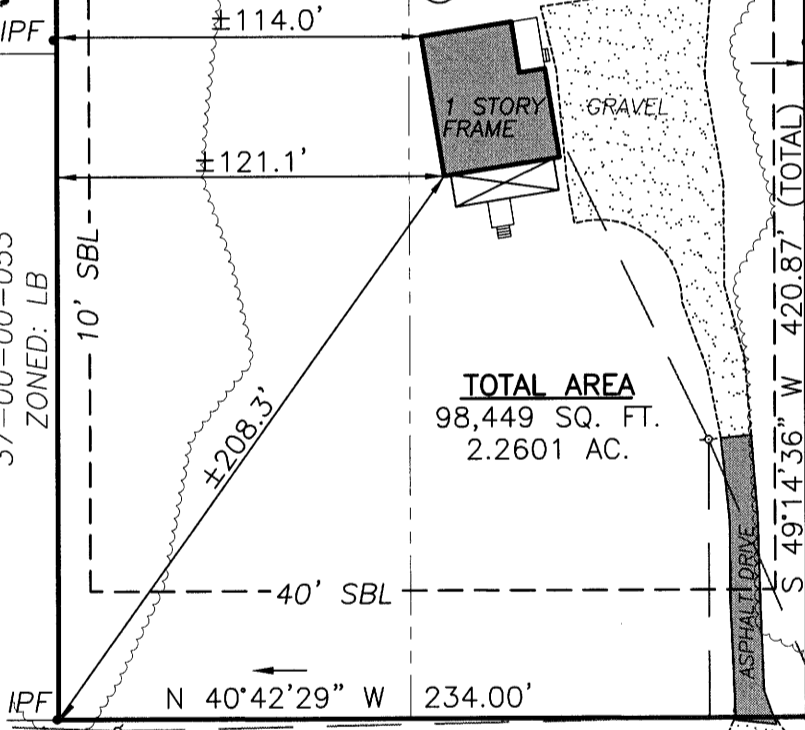
N/F  
 LUCKY DAWG ENTERPRISES, LLC  
 INST. #010004797  
 D.B. 53, PG. 131 (PLAT)  
 GPIN : S03b-4683-4678  
 TAX MAP NO.  
 37-00-00-053  
 ZONED: LB



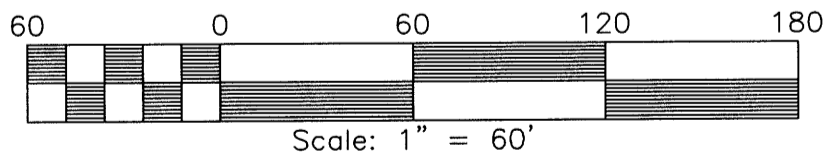
TOTAL AREA  
 98,449 SQ. FT.  
 2.2601 AC.

20' YORK CO. DRAIN.  
 & UTILITY EASEMENT  
 (P.B. 10, PG. 132)

LOT 1  
 N/F  
 RONALD W. TABB &  
 FRANCES E. GAINES-TABB  
 INST. #970000970  
 GPIN : T03a-0008-4312  
 TAX MAP NO.  
 37-21-00-001  
 ZONED: RR



HAMPTON HIGHWAY  
 VIRGINIA STATE ROUTE 134  
 167' RIGHT OF WAY (PER P.B. 10, PG. 132)



- LEGEND**
- OVERHEAD WIRE
  - IPF = IRON PIPE FOUND
  - IRS = IRON ROD SET
  - ⊕ UTILITY POLE



REFERENCES:  
 DB 393, PGS  
 21-23  
 DATE: 9/17/09  
 SCALE: 1"=60'  
 JOB# 09-091  
 CAD File  
 09-091.dwg

PLAT SHOWING A PROPERTY LINE VACATION  
 ON THE PROPERTIES OF  
**SANDRA FAYE ALIFF HAWKINS**  
 (D.B. 393, PGS. 21-23)  
 BETHEL DISTRICT YORK COUNTY VIRGINIA  
**LandTech Resources, Inc.**  
 Surveying • GPS • Engineering  
 205 Bulifants Boulevard, Suite E, Williamsburg, Virginia 23188  
 Telephone: 757-565-1677 Fax: 757-565-0782  
 Web: landtechresources.com