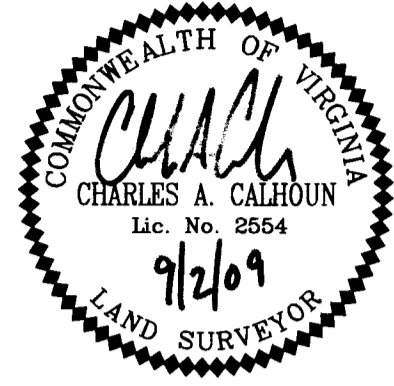
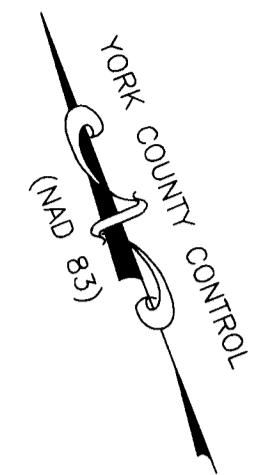


CURVE TABLE

NUMBER	DELTA	CHORD BEARING	TANGENT	RADIUS	ARC	CHORD
C1	23°32'22"	S 41°23'55" W	198.81	954.16	392.01	389.26
C2	23°58'17"	S 65°09'15" W	198.39	934.51	390.98	388.13
C3	26°08'52"	N 89°47'10" W	207.38	893.01	407.54	404.01
C4	22°47'21"	N 19°50'33" W	13.57	67.32	26.78	26.60
C5	51°40'06"	N 57°04'58" W	9.02	18.63	16.80	16.24
C6	20°17'00"	N 64°07'48" W	169.16	945.69	334.79	333.04
C7	04°22'00"	N 76°27'18" W	43.58	1143.20	87.13	87.11

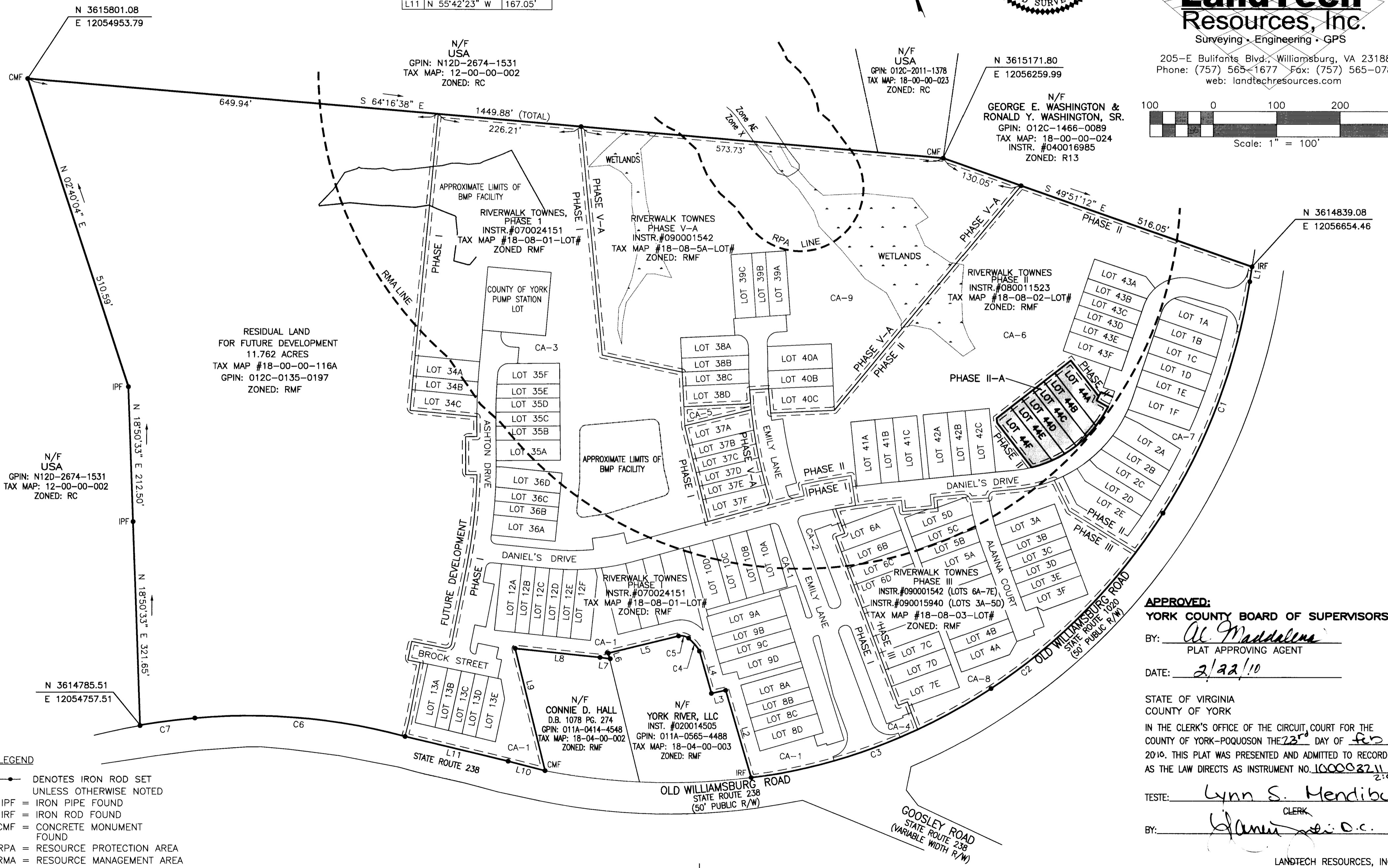
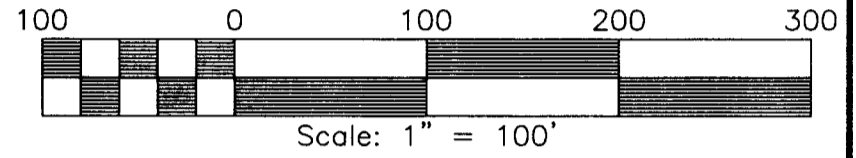
LINE TABLE

NO.	DIRECTION	DISTANCE
L1	S 29°37'44" W	23.74'
L2	N 04°42'08" E	144.77'
L3	N 81°41'21" W	23.14'
L4	N 05°02'50" E	69.61'
L5	N 82°54'20" W	114.11'
L6	S 07°16'14" W	8.90'
L7	N 62°04'33" W	15.17'
L8	N 63°12'49" W	134.69'
L9	S 07°04'51" W	199.26'
L10	N 54°46'21" W	60.10'
L11	N 55°42'23" W	167.05'



SUBDIVISION PLAT OF
RIVERWALK TOWNES
 PHASE II-A
 NELSON MAGISTERIAL DISTRICT
 YORK COUNTY, VIRGINIA
 DATE: 04/20/09 SCALE: 1"=100' JOB #07-130
 REV: 09/02/09
 SHEET 2 OF 3

LandTech Resources, Inc.
 Surveying • Engineering • GPS
 205-E Bulifante Blvd., Williamsburg, VA 23188
 Phone: (757) 565-1677 Fax: (757) 565-0782
 web: landtechresources.com



- LEGEND**
- DENOTES IRON ROD SET UNLESS OTHERWISE NOTED
 - IPF = IRON PIPE FOUND
 - IRF = IRON ROD FOUND
 - CMF = CONCRETE MONUMENT FOUND
 - RPA = RESOURCE PROTECTION AREA
 - RMA = RESOURCE MANAGEMENT AREA

APPROVED:
YORK COUNTY BOARD OF SUPERVISORS
 BY: *Al. Maddalena*
 PLAT APPROVING AGENT
 DATE: *2/22/10*

STATE OF VIRGINIA
 COUNTY OF YORK
 IN THE CLERK'S OFFICE OF THE CIRCUIT COURT FOR THE COUNTY OF YORK-POQUOSON THE *23rd* DAY OF *Feb* 20*10*. THIS PLAT WAS PRESENTED AND ADMITTED TO RECORD AS THE LAW DIRECTS AS INSTRUMENT NO. *100003711*

TESTE: *Lynn S. Mendibur*
 CLERK
 BY: *James D.C.*

LANDTECH RESOURCES, INC.