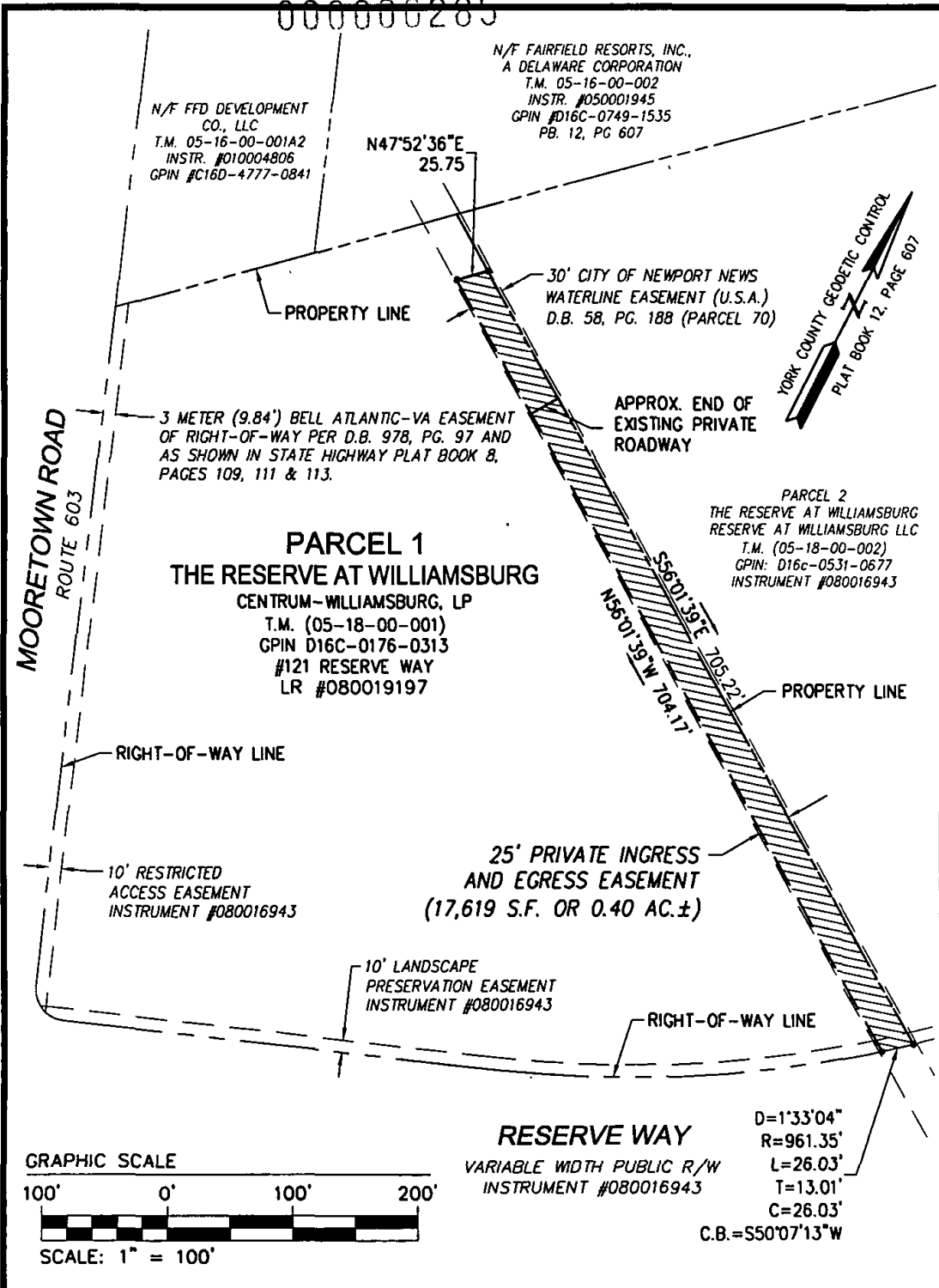


000000285



N/F FFD DEVELOPMENT
CO., LLC
T.M. 05-16-00-001A2
INSTR. #010004806
GPIN #C16D-4777-0841

N/F FAIRFIELD RESORTS, INC.,
A DELAWARE CORPORATION
T.M. 05-16-00-002
INSTR. #050001945
GPIN #D16C-0749-1535
PB. 12, PG. 607

YORK COUNTY GEODETIC CONTROL
PLAT BOOK 12, PAGE 607

3 METER (9.84') BELL ATLANTIC-VA EASEMENT
OF RIGHT-OF-WAY PER D.B. 978, PG. 97 AND
AS SHOWN IN STATE HIGHWAY PLAT BOOK 8,
PAGES 109, 111 & 113.

30' CITY OF NEWPORT NEWS
WATERLINE EASEMENT (U.S.A.)
D.B. 58, PG. 188 (PARCEL 70)

APPROX. END OF
EXISTING PRIVATE
ROADWAY

PARCEL 1
THE RESERVE AT WILLIAMSBURG
CENTRUM-WILLIAMSBURG, LP
T.M. (05-18-00-001)
GPIN D16C-0176-0313
#121 RESERVE WAY
LR #080019197

PARCEL 2
THE RESERVE AT WILLIAMSBURG
RESERVE AT WILLIAMSBURG LLC
T.M. (05-18-00-002)
GPIN: D16c-0531-0677
INSTRUMENT #080016943

MOORETOWN ROAD
ROUTE 603

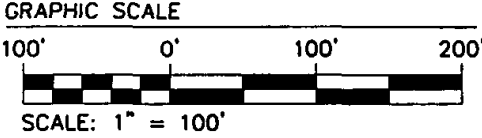
RIGHT-OF-WAY LINE

10' RESTRICTED
ACCESS EASEMENT
INSTRUMENT #080016943

25' PRIVATE INGRESS
AND EGRESS EASEMENT
(17,619 S.F. OR 0.40 AC.±)

10' LANDSCAPE
PRESERVATION EASEMENT
INSTRUMENT #080016943

RIGHT-OF-WAY LINE



RESERVE WAY
VARIABLE WIDTH PUBLIC R/W
INSTRUMENT #080016943

D=1'33"04"
R=961.35'
L=26.03'
T=13.01'
C=26.03'
C.B.=S50°07'13"W



CONSULTING ENGINEERS
WILLIAMSBURG • RICHMOND • GLOUCESTER • FREDERICKSBURG

5248 Olde Towne Road, Suite 1
Williamsburg, Virginia 23188
(757) 253-0040 Fax (757) 220-8994

EXHIBIT "A"
SHOWING PRIVATE INGRESS AND EGRESS EASEMENT
PARCEL 1
THE RESERVE AT WILLIAMSBURG
PREPARED FOR:
CENTRUM-WILLIAMSBURG LIMITED PARTNERSHIP,
A VIRGINIA LIMITED PARTNERSHIP

BRUTON DISTRICT COUNTY OF YORK VIRGINIA

Scale: 1" = 100' Reference: Instrument #080016943 Date: 8/13/08 Job No: 9128-9