

CURVE TABLE: 000000410

THE WINDY POINT RECREATION ASSOCIATION
 GPIN #T05A-2089-2932
 PB 7, PG 79
 DB 211, PG 653

#1
 RADIUS=1317.1'
 LENGTH=71.7'
 DELTA=3°07'06"
 CHORD=71.7'
 CH BEARING=N8°23'19"E

#2
 RADIUS=2077.1'
 LENGTH=127.6'
 DELTA=3°31'13"
 CHORD=127.6'
 CH BEARING=N5°04'10"E

#3
 RADIUS=1235.2'
 LENGTH=141.2'
 DELTA=6°33'00"
 CHORD=141.1'
 CH BEARING=N6°35'03"E

#4
 RADIUS=3421.6'
 LENGTH=171.8'
 DELTA=2°52'34"
 CHORD=171.7'
 CH BEARING=N11°17'50"E

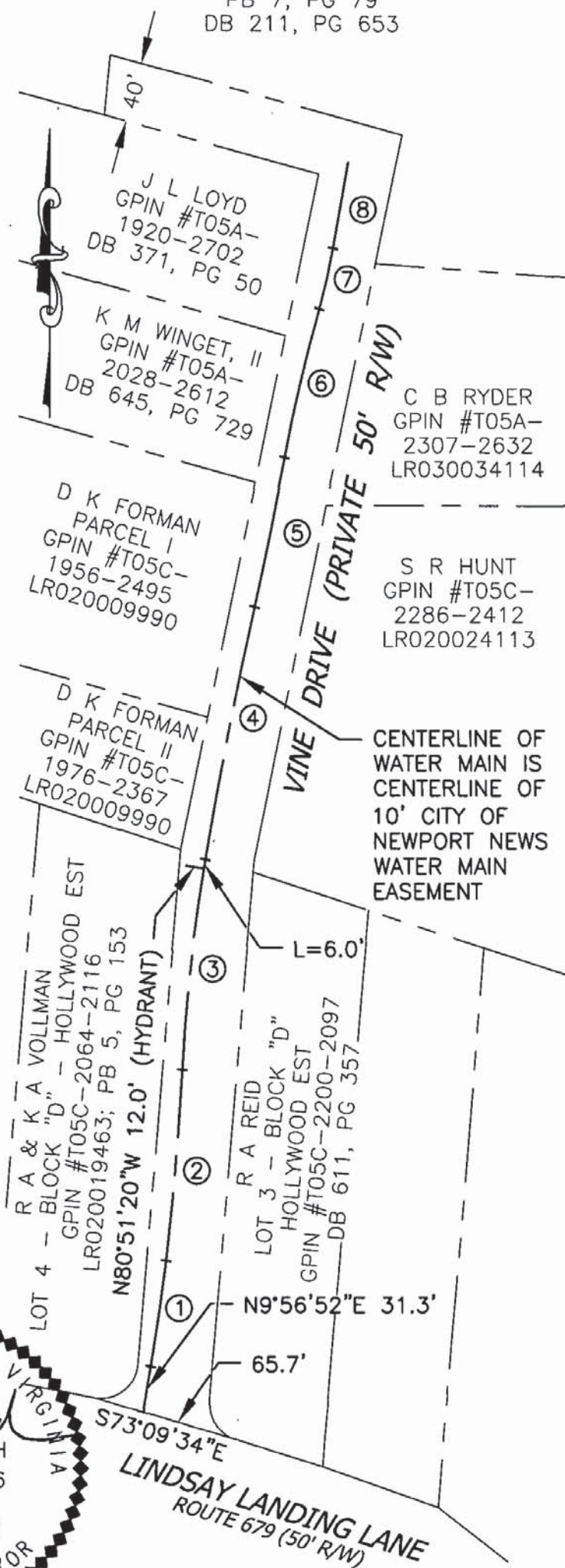
#5
 RADIUS=3109.6'
 LENGTH=101.8'
 DELTA=1°52'36"
 CHORD=101.8'
 CH BEARING=N11°47'49"E

#6
 RADIUS=1148.6'
 LENGTH=101.9'
 DELTA=5°04'56"
 CHORD=101.8'
 CH BEARING=N13°23'59"E

#7
 RADIUS=411.7'
 LENGTH=41.4'
 DELTA=5°46'02"
 CHORD=41.4'
 CH BEARING=N13°03'26"E

#8
 RADIUS=13620.6'
 LENGTH=58.2'
 DELTA=0°14'41"
 CHORD=58.2'
 CH BEARING=N10°03'04"E

YORK COUNTY
 APPROVED FOR RECORDATION
 BY: *[Signature]*
 RIGHT-OF-WAAGENT
 DATE: 3/11/10



PROPERTY ADDRESS : 315 VINE DRIVE

THIS PLAT DOES NOT REPRESENT A FIELD OR BOUNDARY SURVEY. THE PROPERTY AND WATER MAIN SHOWN HEREON ARE BASED ON CONSTRUCTION AND RECORDED DOCUMENTS. THIS PROPERTY IS SUBJECT TO EASEMENTS, SERVITUDES AND COVENANTS OF RECORD AND THIS PLAT WAS MADE WITHOUT BENEFIT OF A TITLE SEARCH. PHYSICAL IMPROVEMENTS TO THIS PROPERTY ARE NOT SHOWN HEREON.

PLAT SHOWING WATER MAIN EASEMENT TO BE CONVEYED TO THE CITY OF NEWPORT NEWS, VIRGINIA BY THE WINDY POINT RECREATION ASSOCIATION, INC. YORK COUNTY, VIRGINIA

DRAWING FILE NUMBER H-7917	PRINT FILE NUMBER N-11836	ESTIMATE NUMBER 046-FY2010	DRAWN BY MRC	PLAT DATE OCTOBER 28, 2009	SCALE 1" = 100'
-------------------------------	------------------------------	-------------------------------	-----------------	-------------------------------	--------------------