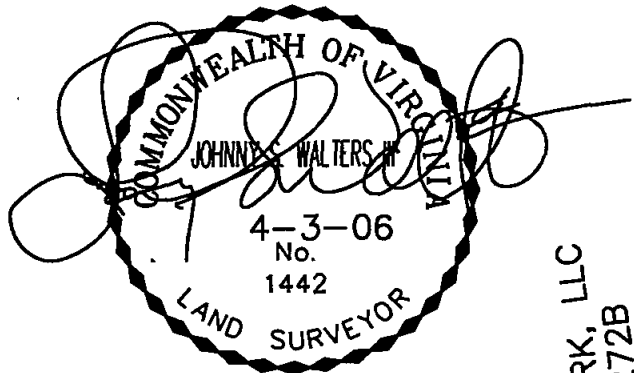


NUMBER	DIRECTION	DISTANCE
L1	N 52°01'40" W	25.00'
L2	N 28°11'00" W	2.74'



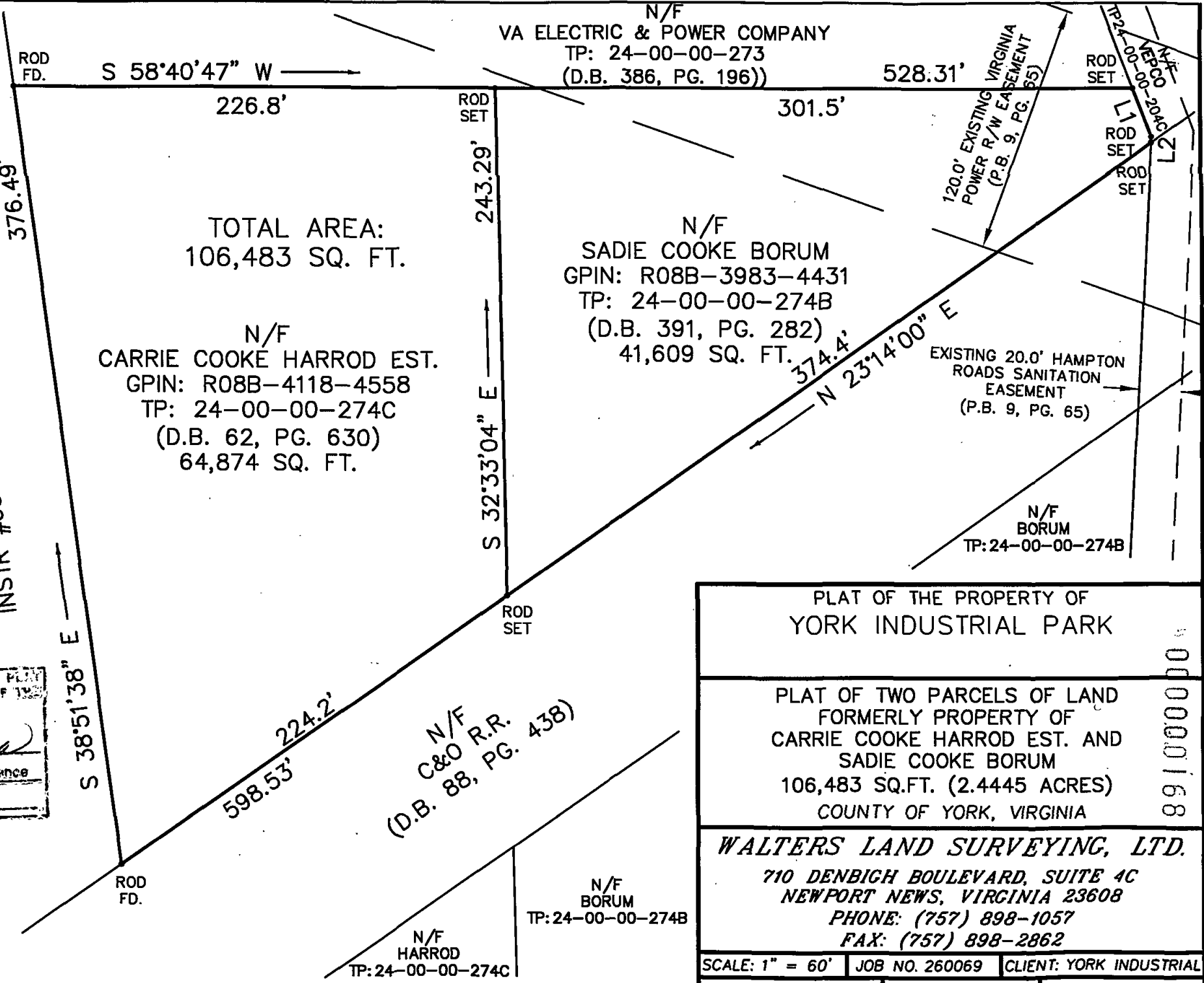
N/F  
 YORK INDUSTRIAL PARK, LLC  
 TP: 24-00-00-272B  
 INSTR #050026386

P.B. 9, PG. 65  
 RECORD NORTH

THE PROPERTY AS DEPICTED ON THIS PLAN  
 DOES NOT VIOLATE THE PROVISIONS OF THE  
 YORK COUNTY SUBDIVISION ORDINANCE

SIGNED: *Al Maddalena*  
 TITLE: Chief of Development & Compliance  
 DATE: 1/26/07

PLAT REF.: P.B. 9, PG. 65  
 FLOOD ZONE: X  
 COMMUNITY NO.: 510182  
 PANEL NO.: 36  
 SUFFIX: B  
 DATE OF FIRM INDEX: 12-16-88



TOTAL AREA:  
 106,483 SQ. FT.

N/F  
 CARRIE COOKE HARROD EST.  
 GPIN: R08B-4118-4558  
 TP: 24-00-00-274C  
 (D.B. 62, PG. 630)  
 64,874 SQ. FT.

N/F  
 SADIE COOKE BORUM  
 GPIN: R08B-3983-4431  
 TP: 24-00-00-274B  
 (D.B. 391, PG. 282)  
 41,609 SQ. FT.

PLAT OF THE PROPERTY OF  
 YORK INDUSTRIAL PARK

PLAT OF TWO PARCELS OF LAND  
 FORMERLY PROPERTY OF  
 CARRIE COOKE HARROD EST. AND  
 SADIE COOKE BORUM  
 106,483 SQ.FT. (2.4445 ACRES)  
 COUNTY OF YORK, VIRGINIA

**WALTERS LAND SURVEYING, LTD.**  
 710 DENBIGH BOULEVARD, SUITE 4C  
 NEWPORT NEWS, VIRGINIA 23608  
 PHONE: (757) 898-1057  
 FAX: (757) 898-2862

SCALE: 1" = 60' | JOB NO. 260069 | CLIENT: YORK INDUSTRIAL  
 F.B. Pg. | DATE: 4-3-06 | DRAWN BY: S.J.M.