

SUBDIVISION OF THE PROPERTIES OF
**THE ECONOMIC DEVELOPMENT AUTHORITY
 OF YORK COUNTY, VIRGINIA
 AND
 COUNTY OF YORK, VIRGINIA**

BEING LOCATED IN THE
 NELSON MAGISTERIAL DISTRICT, YORK COUNTY, VIRGINIA

DATE: 6-23-2010 SCALE: 1"=100' JOB # 10-024

CURVE TABLE

CURVE	RADIUS	ARC LENGTH	CHORD LENGTH	CHORD BEARING	DELTA ANGLE
C1	50.00'	75.08'	68.22'	N 24°15'30" E	86°02'16"
C2	1874.86'	73.99'	73.99'	N 16°56'29" W	2°15'41"
C3	1874.86'	246.06'	245.88'	N 07°47'40" W	7°31'10"
C4	375.00'	354.83'	341.74'	S 85°36'56" E	54°12'52"
C5	375.00'	221.60'	218.39'	S 41°34'45" E	33°51'29"
C6	25.00'	35.76'	32.79'	S 66°32'13" E	81°57'01"
C7	60.00'	271.16'	92.60'	S 24°49'18" W	258°58'24"
C8	325.00'	499.28'	451.52'	N 68°41'23" W	88°06'56"
C9	375.00'	23.28'	23.27'	S 56°43'48" E	3°33'24"

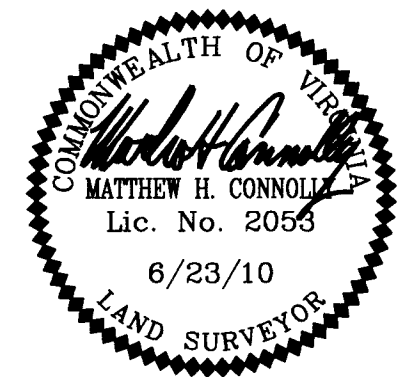
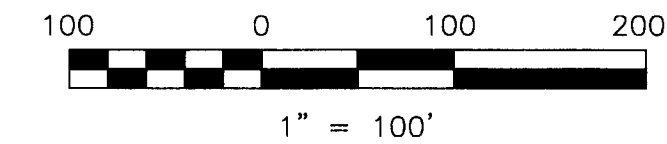
LINE TABLE

LINE	BEARING	DISTANCE
L1	S 62°11'19" E	12.28'
L2	N 81°45'00" E	9.04'
L3	N 64°18'30" E	35.00'
L4	N 18°45'38" W	22.99'

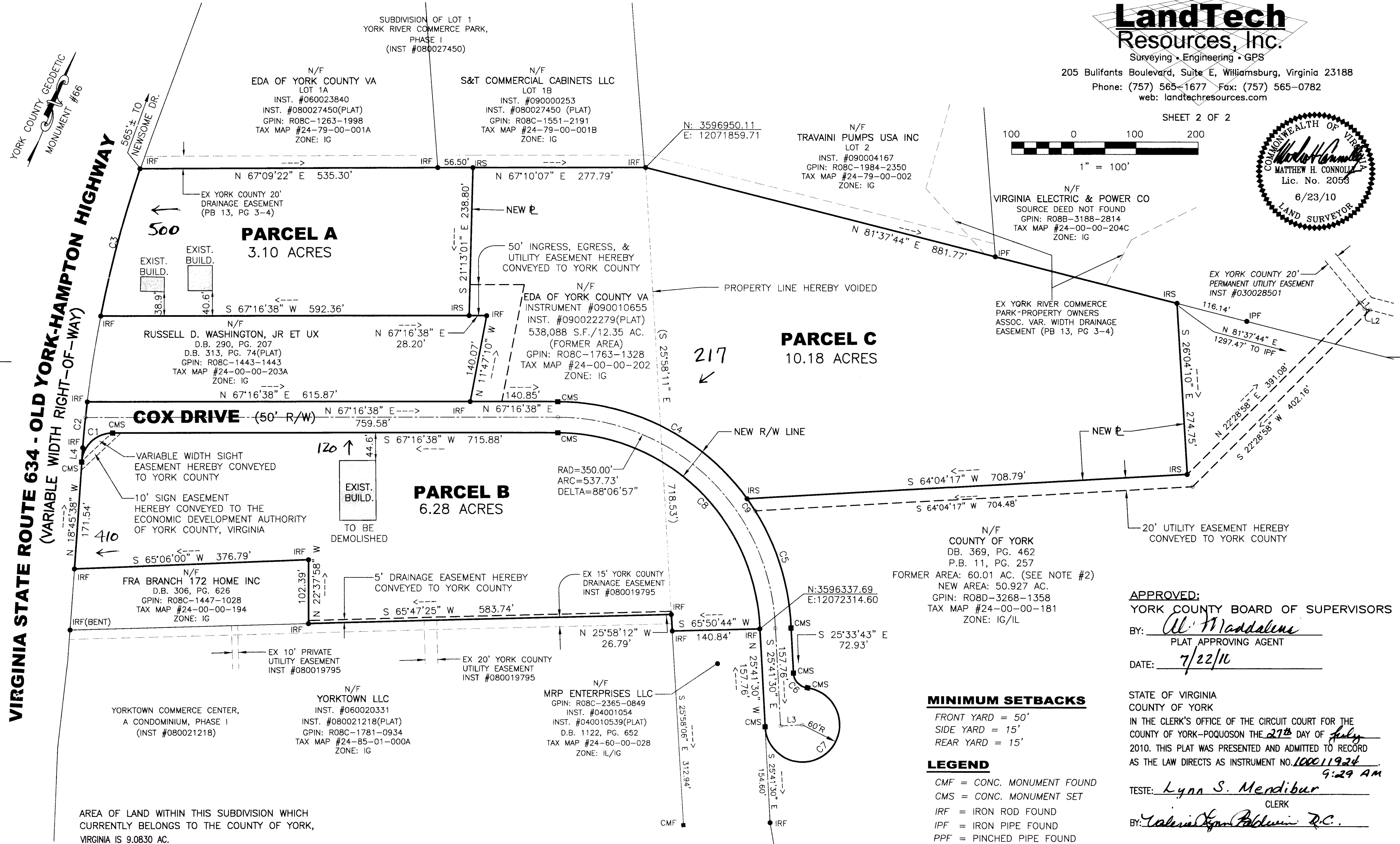
**LandTech
 Resources, Inc.**
 Surveying • Engineering • GPS

205 Bulifants Boulevard, Suite E, Williamsburg, Virginia 23188
 Phone: (757) 565-1677 Fax: (757) 565-0782
 web: landtechresources.com

SHEET 2 OF 2



2010 JUL 27 AM 9:29



VIRGINIA STATE ROUTE 634 - OLD YORK-HAMPTON HIGHWAY
 (VARIABLE WIDTH RIGHT-OF-WAY)

AREA OF LAND WITHIN THIS SUBDIVISION WHICH CURRENTLY BELONGS TO THE COUNTY OF YORK, VIRGINIA IS 9.0830 AC.

MINIMUM SETBACKS

- FRONT YARD = 50'
- SIDE YARD = 15'
- REAR YARD = 15'

LEGEND

- CMF = CONC. MONUMENT FOUND
- CMS = CONC. MONUMENT SET
- IRF = IRON ROD FOUND
- IPF = IRON PIPE FOUND
- PPF = PINCHED PIPE FOUND

APPROVED:
 YORK COUNTY BOARD OF SUPERVISORS

BY: *Al. Maddaloni*
 PLAT APPROVING AGENT

DATE: 7/22/10

STATE OF VIRGINIA
 COUNTY OF YORK
 IN THE CLERK'S OFFICE OF THE CIRCUIT COURT FOR THE
 COUNTY OF YORK-POQUOSON THE 27th DAY OF July
 2010. THIS PLAT WAS PRESENTED AND ADMITTED TO RECORD
 AS THE LAW DIRECTS AS INSTRUMENT NO. 100011924

TESTE: *Lynn S. Mendibur*
 CLERK
 BY: *Valerie Lynn Baldwin D.C.*