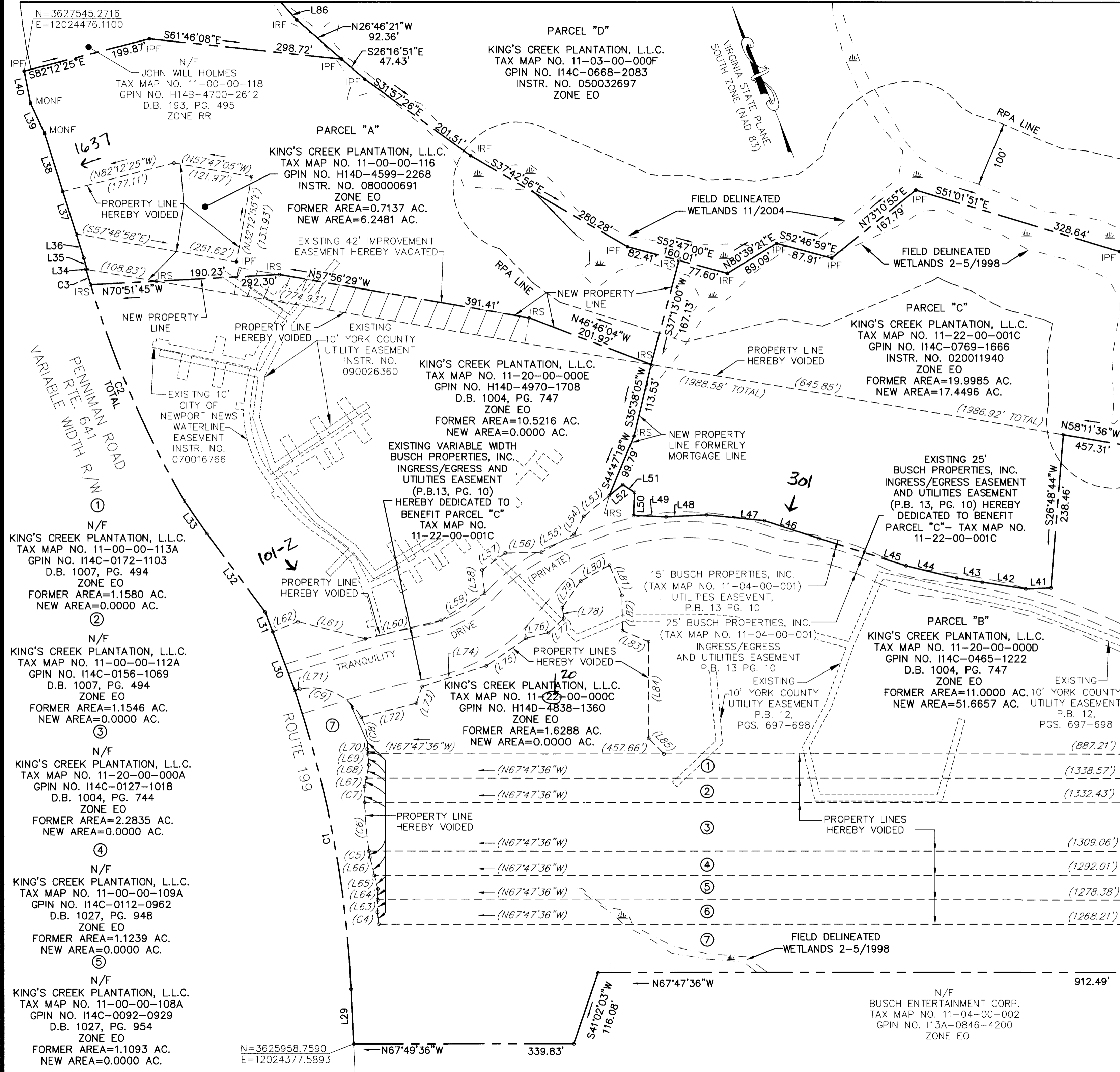


MATCHLINE SEE SHEET 5



BOUNDARY LINE ADJUSTMENT
 BETWEEN THE PROPERTIES OF
KING'S CREEK PLANTATION, L.L.C.
 BRUTON DISTRICT, YORK COUNTY, VIRGINIA
 DATE: 1/04/10 SCALE: 1"=100'
 REVISED: 3/01/10
 SHEET 3 OF 6

⑥
 N/F
 KING'S CREEK PLANTATION, L.L.C.
 TAX MAP NO. 11-00-00-107A
 GPIN NO. I14C-0075-0894
 D.B. 1027, PG. 951
 ZONE EO
 FORMER AREA=1.1006 AC.
 NEW AREA=0.0000 AC.

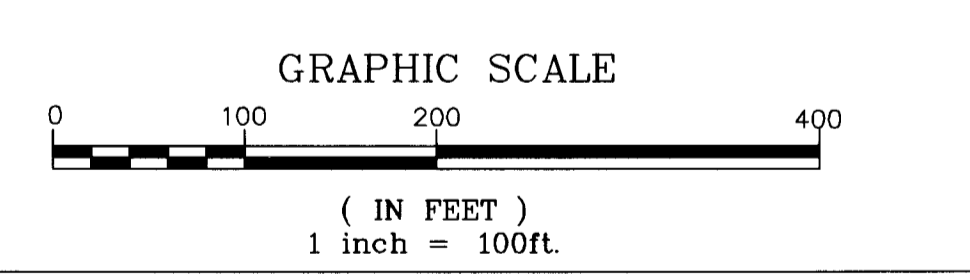
⑦
 N/F
 KING'S CREEK PLANTATION, L.L.C.
 TAX MAP NO. 11-00-00-102
 GPIN NO. H14D-4930-0864
 D.B. 1091, PG. 823
 ZONE EO
 FORMER AREA=3.7131 AC.
 NEW AREA=0.0000 AC.

LEGEND

- RPA LINE --- RESOURCE PROTECTION AREA
- ZONE X500 --- FLOOD ZONE
- ZONE AE ---
- IRS ○ IRON ROD TO BE SET
- IRF ● IRON ROD FOUND
- MONF ■ MONUMENT FOUND
- IPF ● IRON PIPE FOUND



LANDMARK DESIGN GROUP
 Engineers • Planners • Surveyors
 Landscape Architects • Environmental Consultants
 ONE COLUMBUS CENTER SUITE 1100
 VIRGINIA BEACH, VIRGINIA 23462
 (757) 473-2000 FAX: (757) 497-7933



APPROVED:
 YORK COUNTY BOARD OF SUPERVISORS
 BY: *Al Maddalena*
 PLAT APPROVING AGENT
 8/3/10

STATE OF VIRGINIA, COUNTY OF YORK
 IN THE CLERK'S OFFICE OF THE CIRCUIT COURT FOR THE
 COUNTY OF YORK-POQUOSON THE 4th DAY OF
 Aug 2010, THIS MAP WAS PRESENTED AND
 ADMITTED TO RECORD AS THE LAW DIRECTS AS
 instr # 1000(2671) 2:22 Pm
 TESTE: Lynn S. Mendibur
 Clerk